

# ALDER PLACE TOWNHOMES, A CONDOMINIUM

S.E. 1/4, SECTION 28, TOWNSHIP 24 NORTH, RANGE 6 EAST, W.M.  
CITY OF ISSAQUAH, KING COUNTY, WASHINGTON



SCALE: 1" = 20'

### LEGEND

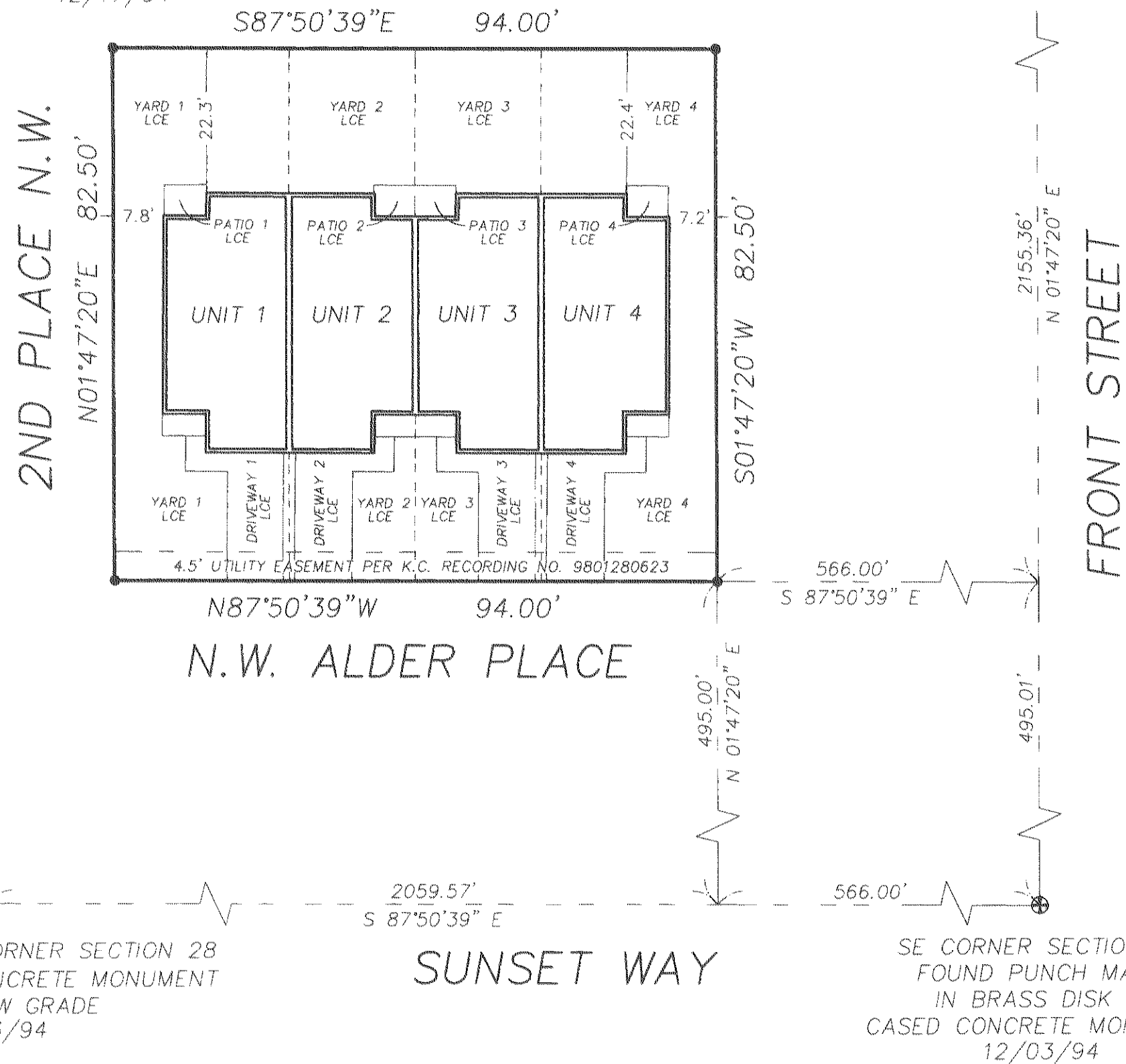
LCE = LIMITED COMMON ELEMENT  
FE = FLOOR ELEVATION  
CE = CEILING ELEVATION

CITY OF ISSAQUAH DATUM (NGVD 1929)

BENCH MARK: FROT #103 - BRASS MONUMENT IN CASE AT THE CENTERLINE INTERSECTIONS OF FRONT STREET & N.W. SUNSET WAY. ELEVATION = 90.27

EAST QUARTER CORNER SECTION 28  
FOUND BRASS SURFACE DISK  
12/03/94

SET REBAR WITH ID CAP  
AT PROPERTY CORNERS  
12/17/94

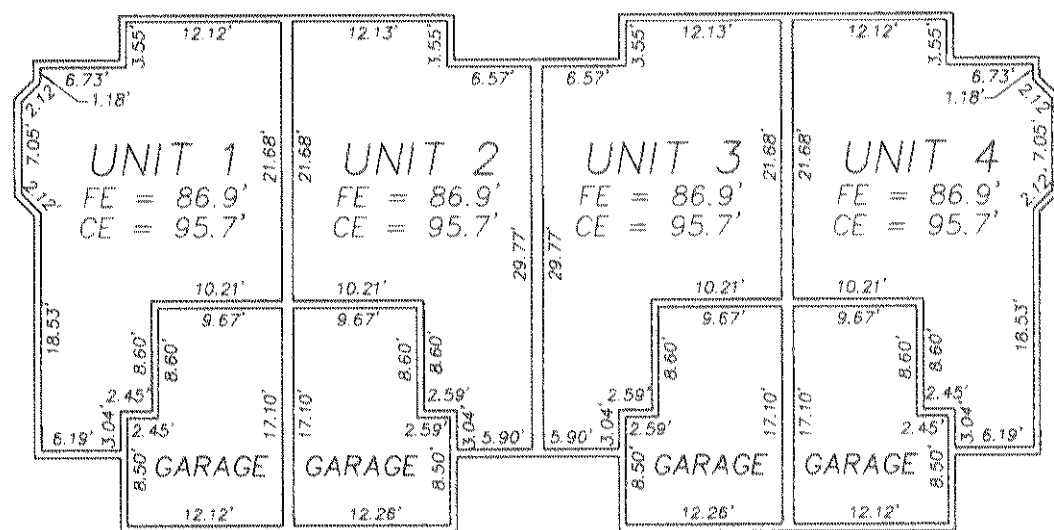


UNIT AREAS			
	GARAGE	1ST FLOOR	2ND FLOOR
UNIT 1	186 S.F.	490 S.F.	697 S.F.
UNIT 2	187 S.F.	473 S.F.	693 S.F.
UNIT 3	187 S.F.	473 S.F.	693 S.F.
UNIT 4	186 S.F.	490 S.F.	697 S.F.

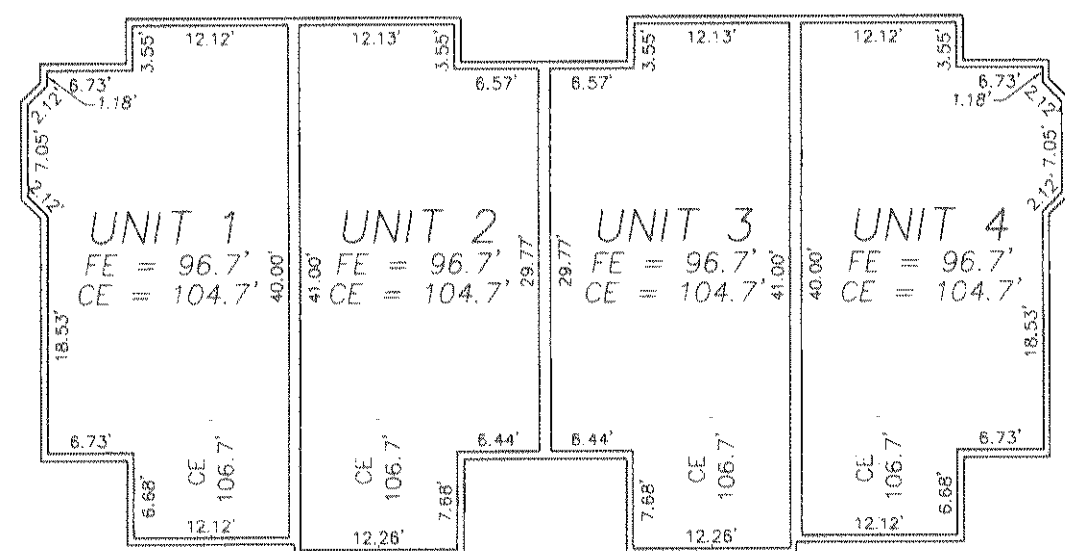
SOUTH QUARTER CORNER SECTION 28  
FOUND 4" X 4" CONCRETE MONUMENT  
0.5' BELOW GRADE  
12/03/94

SUNSET WAY

SE CORNER SECTION 28  
FOUND PUNCH MARK  
IN BRASS DISK IN  
CASED CONCRETE MONUMENT  
12/03/94



FIRST FLOOR PLAN  
SCALE: 1" = 15'



SECOND FLOOR PLAN  
SCALE: 1" = 15'

163 02