



20080623000755

BENNETT-SFS, LL PLAT
PAGE 03 OF 08
06/23/2008 12:31
KING COUNTY, WA

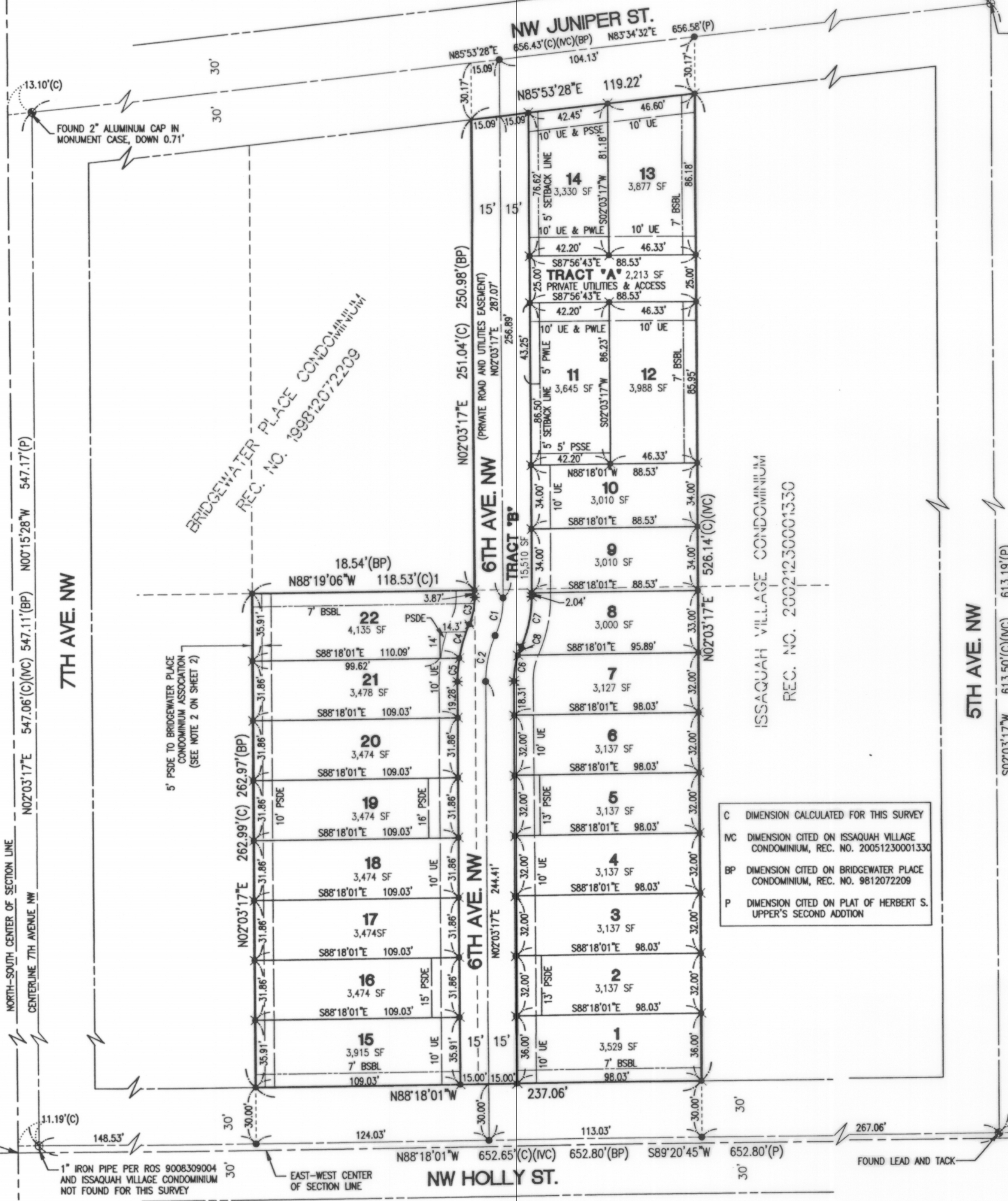
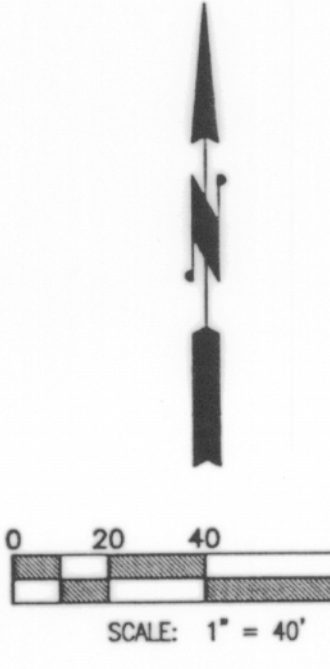
VOLUME/PAGE

248/014

BELSHAYE AT ISSAQUAH

A REPLAT OF LOTS 3, 7 AND 8, BLOCK 5 OF HERBERT UPPER'S SECOND ADDITION TO ISSAQUAH BEING A PORTION OF THE SOUTHWEST QUARTER OF THE NORTHEAST QUARTER OF SECTION 28, TOWNSHIP 24 NORTH, RANGE 6 EAST, WILLAMETTE MERIDIAN CITY OF ISSAQUAH, KING COUNTY, WASHINGTON

5/8" REBAR AND CITY OF ISSAQUAH ALUMINUM CAP ROS 9008309004 NOT FOUND FOR THIS SURVEY

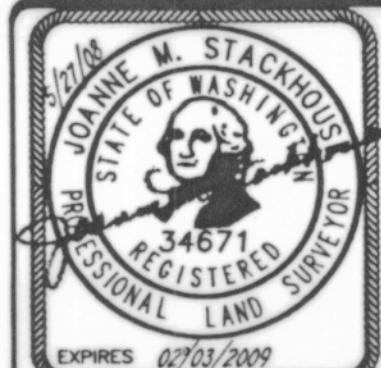


C DIMENSION CALCULATED FOR THIS SURVEY
 NC DIMENSION CITED ON ISSAQUAH VILLAGE CONDOMINIUM, REC. NO. 20051230001330
 BP DIMENSION CITED ON BRIDGEWATER PLACE CONDOMINIUM, REC. NO. 9812072209
 P DIMENSION CITED ON PLAT OF HERBERT S. UPPER'S SECOND ADDITION

SEE SHEET 4 FOR EXISTING POWER EASEMENT LOCATION

CURVE TABLE					
CURVE	LENGTH	RADIUS	DELTA	TANGENT	LOCATION
C1	20.93'	50.00'	23°59'08"	10.62'	CENTERLINE ROAD
C2	25.12'	60.00'	23°59'08"	12.75'	CENTERLINE ROAD
C3	14.65'	35.00'	23°59'08"	7.43'	LOT 22
C4	18.75'	75.00'	14°19'38"	9.43'	LOT 22
C5	12.64'	75.00'	9°39'30"	6.34'	LOT 21
C6	13.93'	45.00'	17°43'55"	7.02'	LOT 7
C7	27.21'	65.00'	23°59'08"	13.81'	LOT 8
C8	4.91'	45.00'	6°15'13"	2.46'	LOT 8

- LEGEND**
- ⊕ MONUMENT FOUND FOR THIS SURVEY AS NOTED
 - ⊖ RECORD MONUMENT NOT FOUND
 - 1/2" REBAR AND CAP MARKED "BCE 34671" SET FOR THIS SURVEY
 - CITY OF ISSAQUAH STANDARD ROAD MONUMENT SET FOR THIS SURVEY
 - PSDE PRIVATE STORM DRAINAGE EASEMENT (SEE EASEMENT NOTES 3-8, SHEET 2)
 - PSSE PRIVATE SANITARY SEWER EASEMENT (SEE EASEMENT NOTE 9, SHEET 2)
 - PWLE PRIVATE WATERLINE EASEMENT (SEE EASEMENT NOTE 10, SHEET 2)
 - SDE PUBLIC STORM DRAINAGE EASEMENT (SEE EASEMENT NOTE 2, SHEET 2)
 - UE UTILITIES EASEMENT (SEE EASEMENT NOTE 1, SHEET 2)



Barghausen Consulting Engineers, Inc.
 Civil Engineering, Land Planning, Surveying, Environmental Services
 18215 72nd Avenue South Kent, WA 98032
 Telephone: (425) 251-6222 Fax: (425) 251-8782

SW1/4 OF NE1/4 OF SEC. 28-T24N-R6E, W.M.
SHEET 3 OF 5