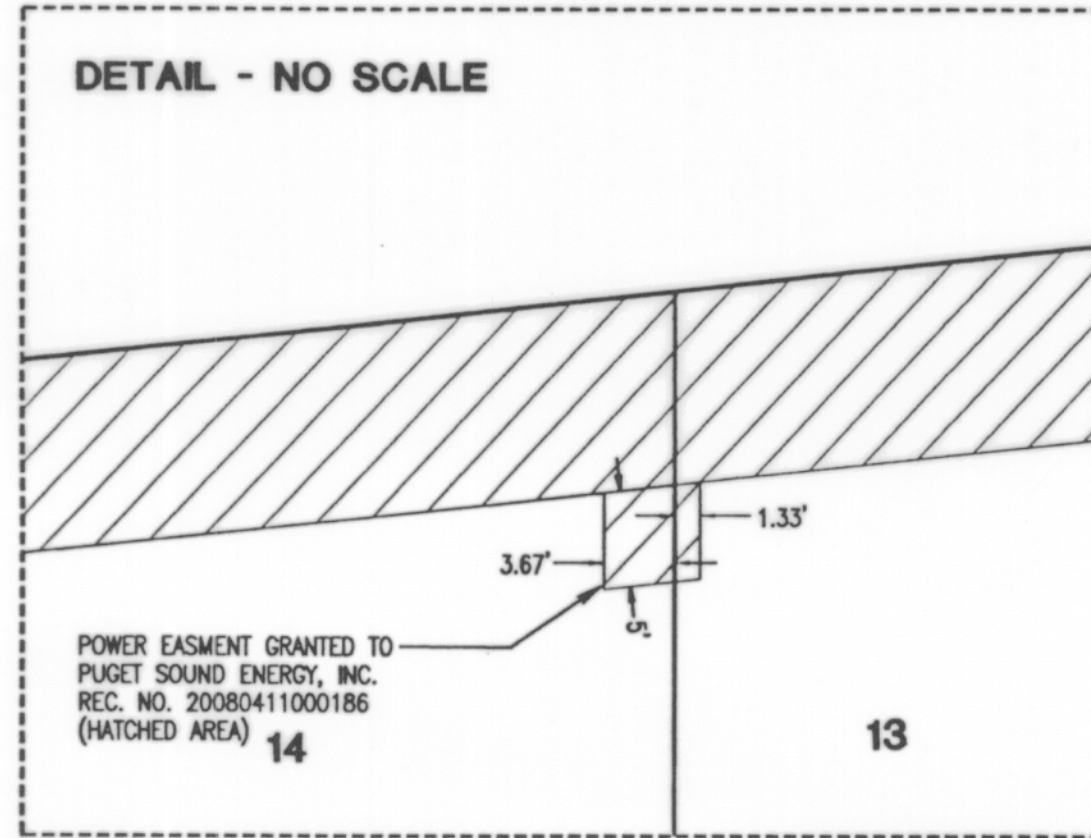
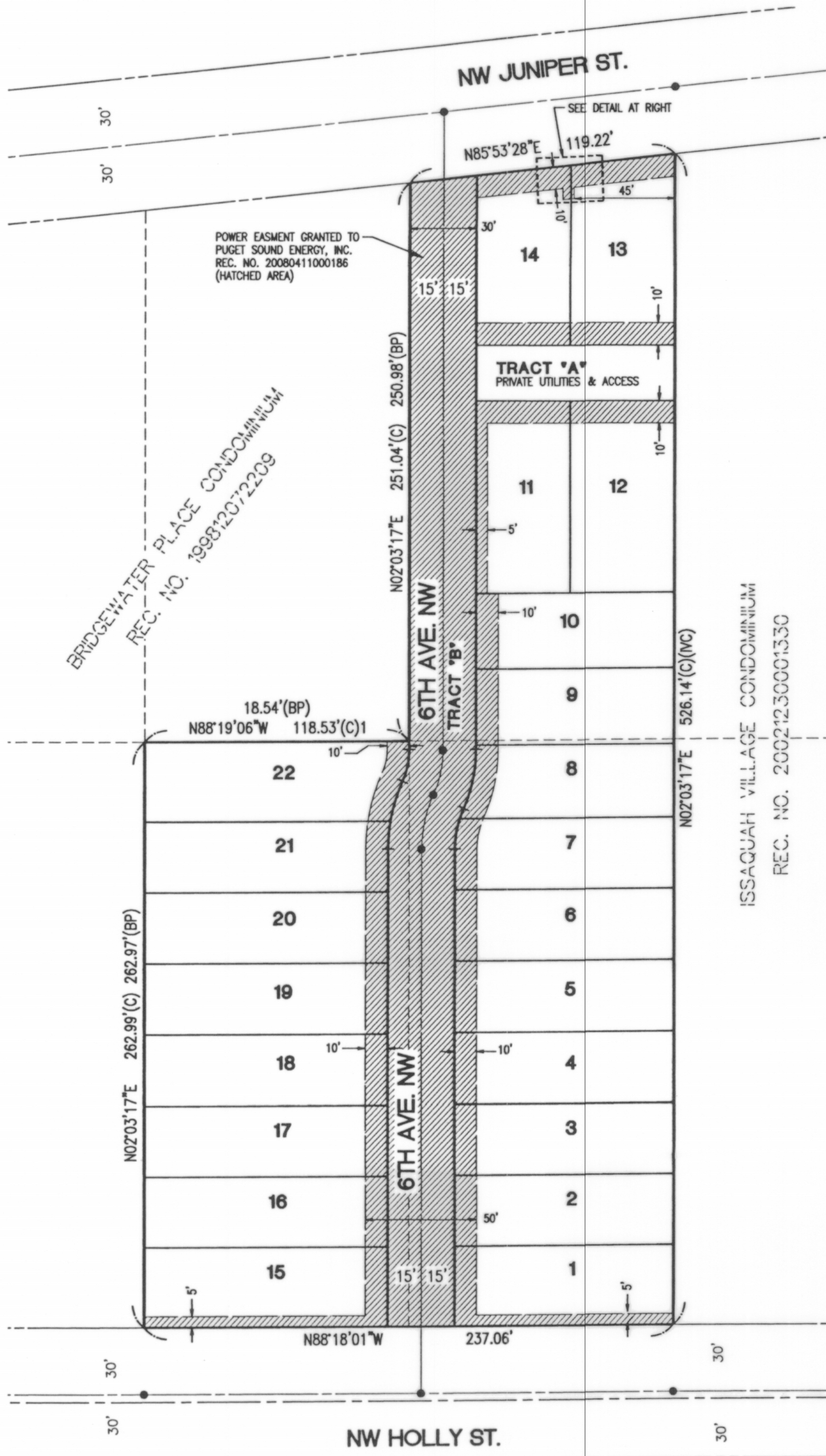


# BELSHAYE AT ISSAQUAH

A REPLAT OF LOTS 3, 7 AND 8, BLOCK 5 OF HERBERT UPPER'S SECOND ADDITION TO ISSAQUAH BEING A PORTION OF THE SOUTHWEST QUARTER OF THE NORTHEAST QUARTER OF SECTION 28, TOWNSHIP 24 NORTH, RANGE 6 EAST, WILLAMETTE MERIDIAN CITY OF ISSAQUAH, KING COUNTY, WASHINGTON



BRIDGEWATER PLACE CONDOMINIUM  
 REC. NO. 199812072209

ISSAQUAH VILLAGE CONDOMINIUM  
 REC. NO. 20021230001330



**Barghausen Consulting Engineers, Inc.**  
 Civil Engineering, Land Planning, Surveying, Environmental Services  
 18215 72nd Avenue South Kent, WA 98032  
 Telephone: (425) 251-6222 Fax: (425) 251-8782

SW1/4 OF NE1/4 OF SEC. 28-T24N-R6E, W  
**SHEET 4 OF 5**