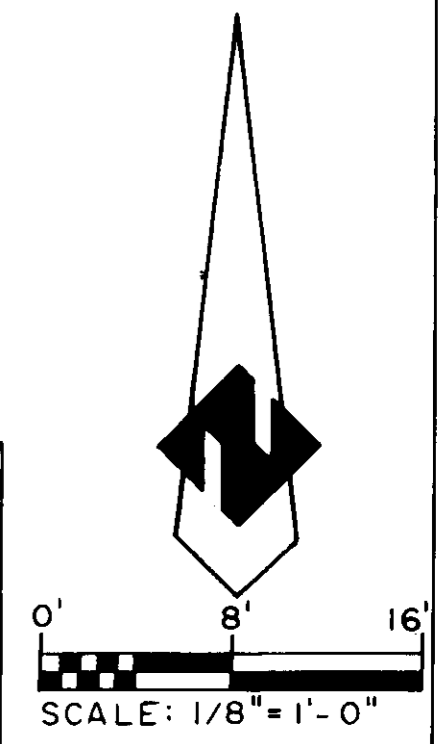
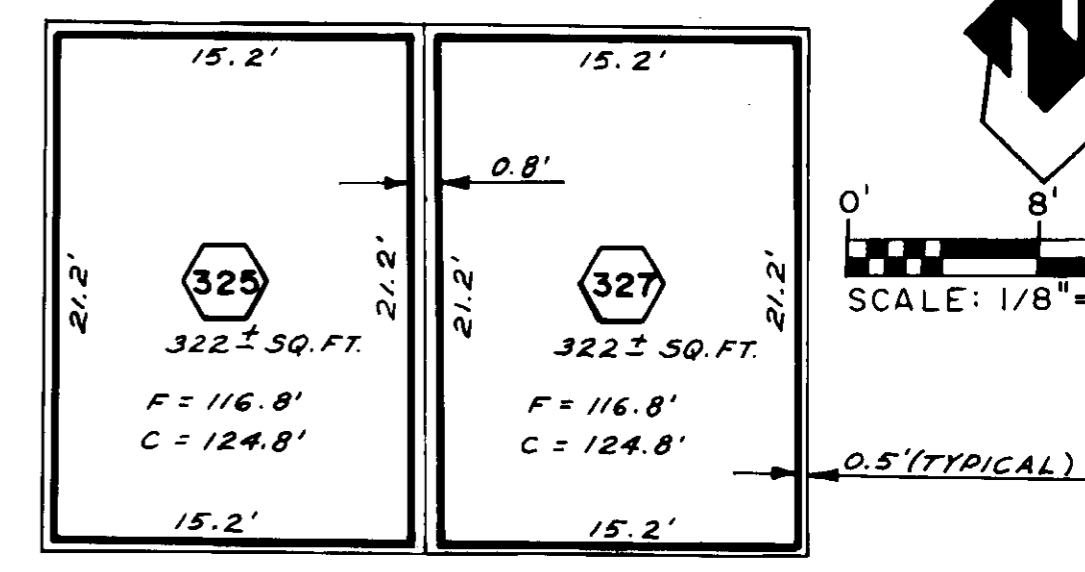
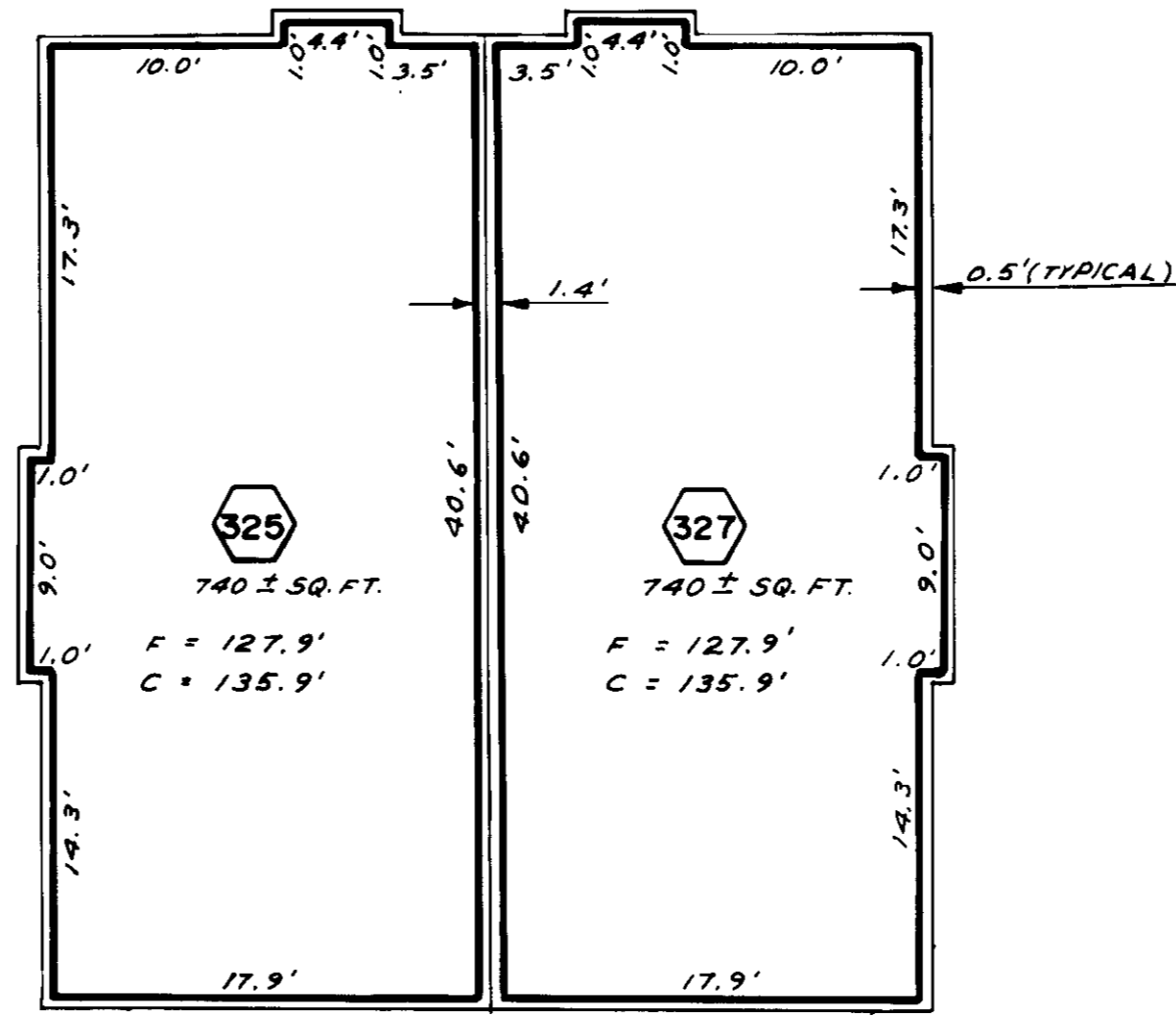
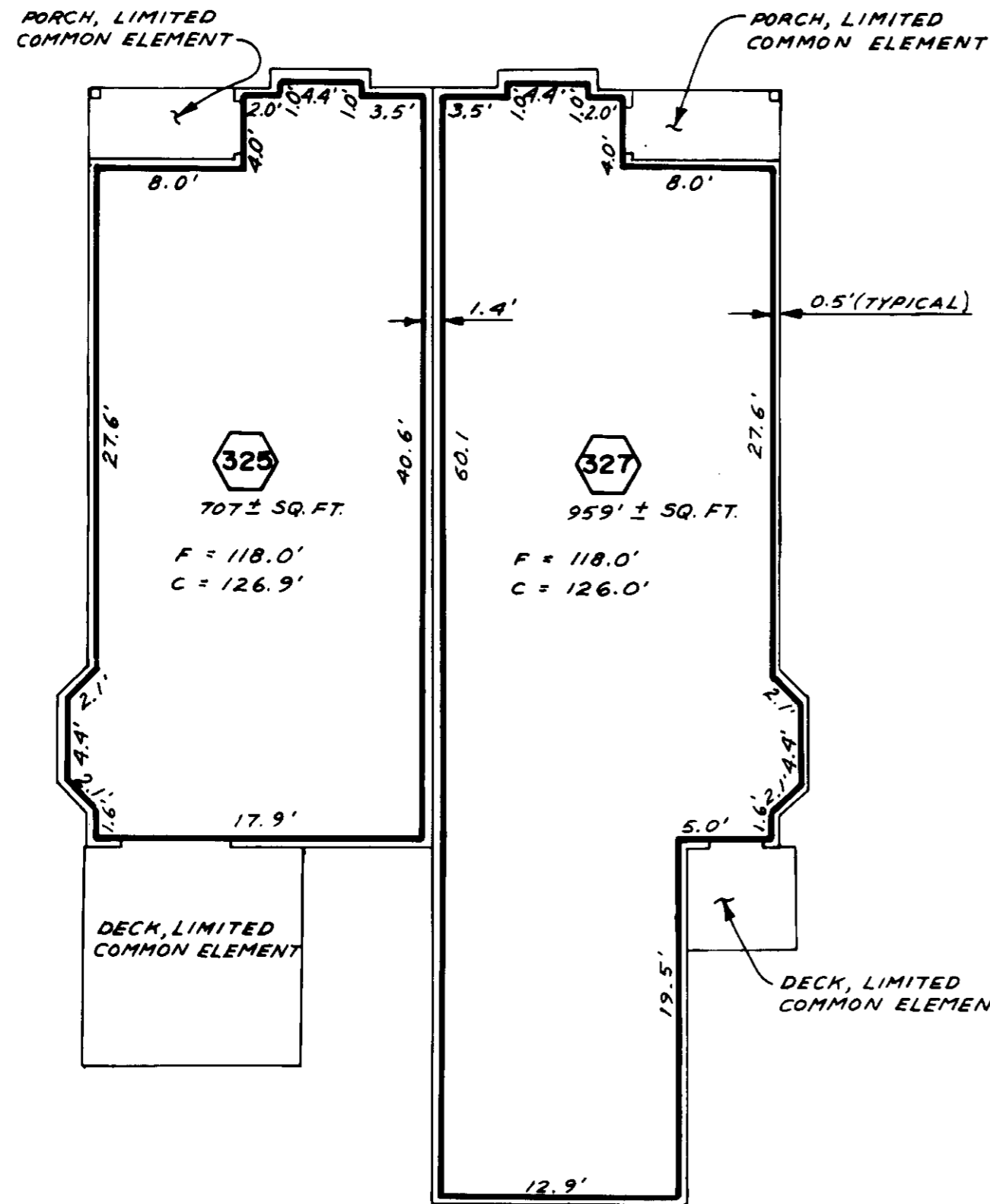


# BIRCH STREET RESIDENCES, A CONDOMINIUM

SE 1/4, SW 1/4, SEC. 27, TWP. 24 N., RGE. 6 E., W.M., KING COUNTY, WASHINGTON



**LEGEND**

325 UNIT DESIGNATION NO.

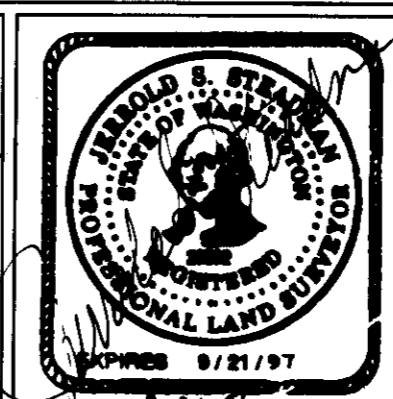
F FLOOR ELEVATION

C CEILING ELEVATION

## FLOOR PLANS

**HEBRANK, STEADMAN & ASSOCIATES, P.S.**  
**PROFESSIONAL LAND SURVEYORS**  
 6564 FIFTH AVENUE SOUTH, SEATTLE, WASHINGTON 98108 (206) 762-4982

**CONDOMINIUM SURVEY**  
**MAP AND PLANS**



**INDEX**  
 McCloskey's Addition,  
 VOL. 21, PG. 34 & 34 1/2,  
 BLOCK 7, LOT 2.  
 SE 1/4, SW 1/4, SEC. 27,  
 TWP. 24 N., RGE. 6 E.,  
 KING COUNTY,  
 WASHINGTON

DATE: OCT. 1996  
 DRAWN BY: M. A.  
 MAP CHECK: J. S. S.  
 FINAL CHECK: J. S. S.  
**9612400**  
 SHEET 3 OF 3