

# COUGAR RIDGE

A PTN. OF THE NE 1/4 OF THE SE 1/4 OF SECTION 19, TOWNSHIP 24 NORTH, RANGE 6 EAST, W.M.

CITY OF ISSAQUAH

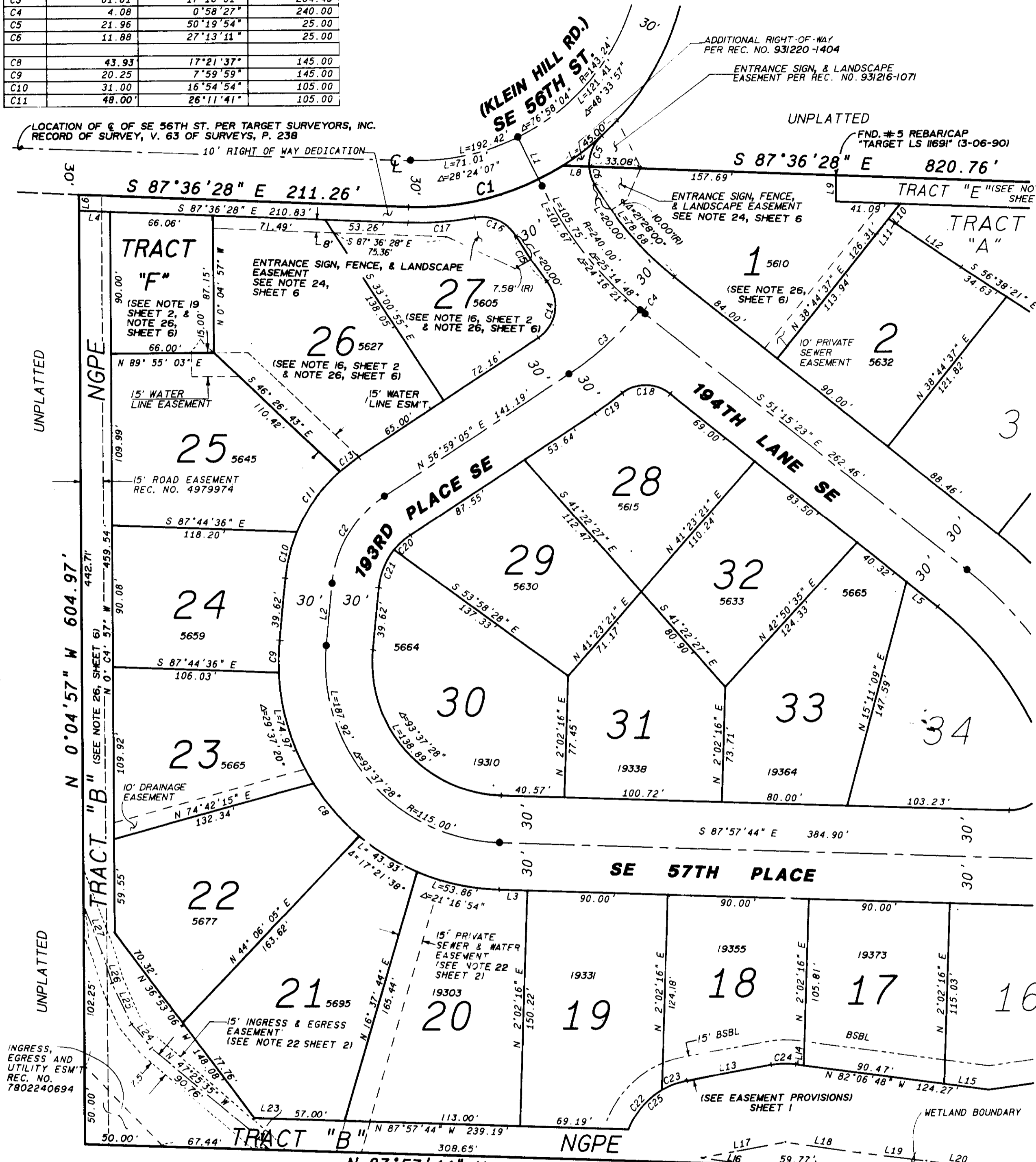
KING COUNTY, WASHINGTON

CURVE TABLE

CURVE	ARC	DELTA	RADIUS
C1	103.48	34°13'32"	173.24
C2	67.18	51°19'22"	75.00
C3	61.61	17°16'01"	204.45
C4	4.08	0°58'27"	240.00
C5	21.96	50°19'54"	25.00
C6	11.88	27°13'11"	25.00
C8	43.93	17°21'37"	145.00
C9	20.25	7°59'59"	145.00
C10	31.00	16°54'54"	105.00
C11	48.00	26°11'41"	105.00

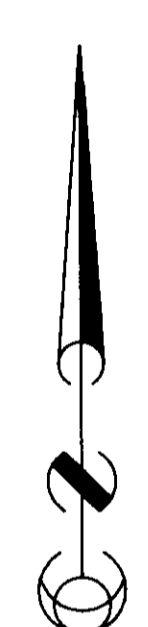
LINE TABLE

LINE	BEARING	DISTANCE
L1	S 26°00'35" E	34.91
L2	N 5°39'43" E	39.62
L3	N 87°57'44" W	18.69
L4	N 87°36'28" W	20.02
L5	N 51°15'23" W	25.37
L6	N 0°04'57" W	10.01
L7	N 0°12'25" W	6.81
L8	N 87°36'28" W	16.92
L9	N 0°12'25" W	16.52
L10	S 38°44'37" W	12.37
L11	S 56°01'43" E	9.46
L12	S 56°01'43" E	46.26
L13	N 79°43'45" E	54.52
L14	N 82°06'48" W	5.25
L15	S 82°06'48" E	28.55
L16	N 81°29'52" W	31.84
L17	N 79°43'45" E	54.52
L18	S 81°23'08" E	47.93
L19	S 82°50'16" E	42.83
L20	S 82°12'32" E	40.42
L21	N 83°55'49" W	58.39
L22	N 81°29'52" W	18.40
L23	N 58°31'52" W	9.89
L24	N 41°13'10" W	18.75
L25	N 25°59'23" W	29.35
L26	N 10°07'32" W	19.25
L27	N 24°15'34" W	33.39



SEE SHEET 4

SEE SHEET 5



LEGEND  
 KING COUNTY STANDARD MONUMENT TO BE SET AS CONSTRUCTION IS COMPLETED

--- BUILDING SETBACK LINE  
 5610 ADDRESS - SEE NOTE 28, SHEET 6  
 (R) RADIAL

CURVE TABLE

CURVE	ARC	DELTA	RADIUS
C13	15.05	8°12'47"	105.00
C14	41.43	94°56'58"	25.00
C15	35.32	7°29'40"	270.00
C16	30.75	70°28'47"	25.00
C17	42.67	13°20'32"	183.24
C18	33.58	76°58'00"	25.00
C19	21.31	5°12'28"	234.45
C20	14.00	17°49'31"	45.00
C21	26.31	33°29'51"	45.00
C22	33.98	38°56'27"	50.00
C23	17.09	19°35'04"	50.00
C24	15.85	18°09'27"	50.00
C25	51.07	58°31'31"	50.00

FILE NO. (F) SU93-02

SEE SHEET 2 OF 6 FOR PLAT NOTES



**Barghausen Consulting Engineers, Inc.**  
 Land Planning, Survey & Engineering Specialists  
 18215 72nd Avenue South Kent, WA. 98032 (206) 251-6222

NE1/4 SE1/4 19-24N-6E  
 SHEET 3 OF 6

VOLUME/PAGE  
 167/34

RECEIVED  
 JAN 24 1994  
 CITY OF ISSAQUAH  
 JAN 21 1994