

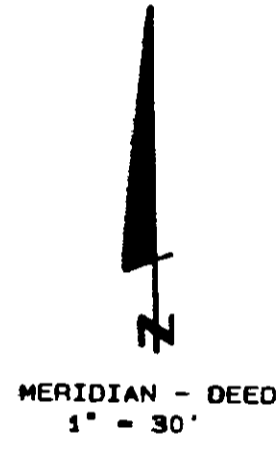
CREEK PLACE  
 A CONDOMINIUM  
 E 1/2, NE 1/4, SEC. 33, TWN. 24N, RGE. 6E, W.M.  
 ISSAQUAH, WA.

SHT 2 OF 4  
**98/36**  
 COND.  
 W SUNSET WAY  
 NE COR 33-24-6

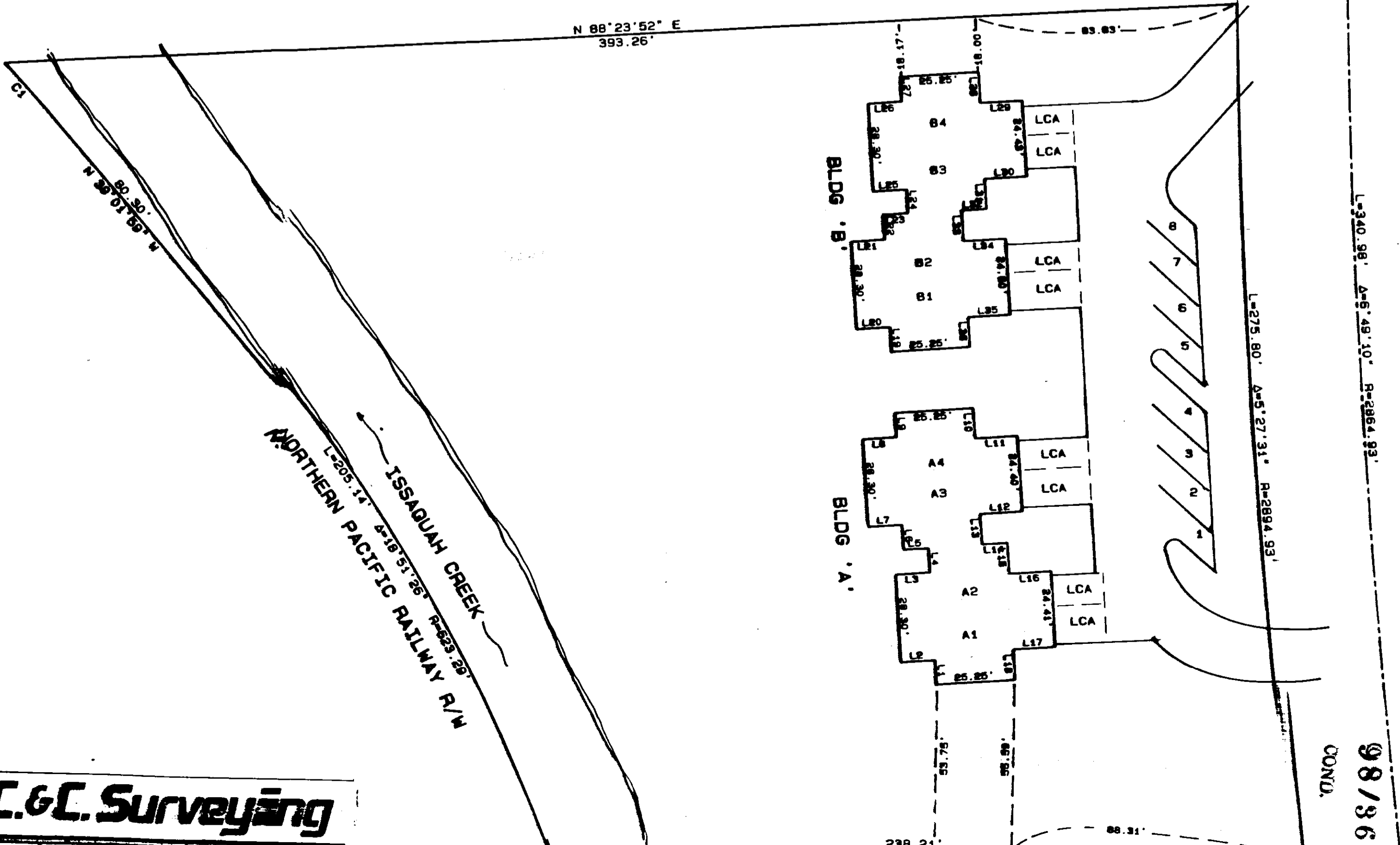
NEWPORT WAY SW  
 MON & CASE (TYP)

2'00'12" N  
 155.991'  
 2'00'12" N  
 155.991'  
 2'00'12" N  
 155.991'  
 FRONT ST.

LINE	BEARING	DISTANCE	LINE	BEARING	DISTANCE
L1	N 1°59'41" W	8.00	L19	N 2°01'31" W	8.00
L2	S 88°00'19" W	11.05	L20	S 87°58'29" W	11.05
L3	N 88°00'19" E	11.05	L21	N 87°58'29" E	11.05
L4	N 2°05'10" W	7.82	L22	N 2°01'31" W	8.00
L5	S 88°00'19" W	8.00	L23	N 87°58'29" E	8.00
L6	N 1°59'41" W	8.00	L24	N 1°56'02" W	7.82
L7	S 88°00'19" W	11.05	L25	S 87°58'29" W	11.05
L8	N 88°00'19" E	11.05	L26	N 87°58'29" E	11.05
L9	N 1°59'41" W	8.00	L27	N 2°01'31" W	8.00
L10	S 2°04'08" E	9.91	L28	S 2°01'32" E	9.97
L11	N 87°45'17" E	13.52	L29	N 87°58'28" E	13.41
L12	S 87°45'17" W	13.60	L30	S 87°58'28" W	13.54
L13	S 2°14'43" E	9.78	L31	S 2°01'32" E	9.88
L14	N 87°45'17" E	7.99	L32	S 88°00'19" W	7.99
L15	S 1°54'28" E	9.96	L33	S 1°59'41" E	9.87
L16	N 88°05'32" E	13.60	L34	N 88°00'19" E	13.57
L17	S 88°05'32" W	13.50	L35	S 88°00'19" W	13.52
L18	S 1°54'28" E	10.01	L36	S 1°59'41" E	9.67
			L37	N 87°59'48" W	30.00



CURVE	ARC	DELTA	RADIUS	TAN LENGTH
C1	20.51	2°29'57"	470.10	10.25
C2	65.08	1°17'17"	2894.93	32.54



**C.G.C. Surveying**