



# FIFTH AVENUE AT SUNSET CONDOMINIUMS

A CONDOMINIUM  
PORTION OF THE NE1/4, NW1/4, SEC. 34, T. 24 N., R. 6 E., W.M.  
KING COUNTY, WASHINGTON

E. SUNSET WAY

FND 2" BRASS DISC W/ PUNCH STAMPED  
"PACE 11691" AT INTX. OF 4TH PL. S.E. &  
E. SUNSET WAY. (8/05)

FND 2" BRASS DISC W/ PUNCH STAMPED  
"PACE 11691" AT INTX. OF 5TH PL. S.E. &  
E. SUNSET WAY. (8/05)

FND 4"x4" CONC. MON W/ 1-3/4" BRASS  
DISC W/ PUNCH STAMPED "11691" DOWN  
0.25' IN A CASE AT INTX. OF 4TH PL. S.E.  
& S.E. ANDREWS ST. (8/05)

FND 4"x4" CONC. MON W/ 1-3/4" BRASS  
DISC W/ PUNCH STAMPED "11691" DOWN  
0.4' IN A CASE AT INTX. OF 5TH PL. S.E.  
& S.E. ANDREWS ST. (8/05)



Scale 1" = 20'

### MERIDIAN

RIGHT-OF-WAY RESOLUTION RECORDED IN VOLUME 157 OF  
SURVEYS, AT PAGES 245-245H, UNDER RECORDING NUMBER  
20030203900002.

### LEGEND

- SET 1/2" X 24" REBAR WITH 1 3/4" PLASTIC CAP STAMPED "MEAD  
GILMAN & ASSOCIATES 29276/32434/35145/36811" (EXCEPT AS  
OTHERWISE NOTED).

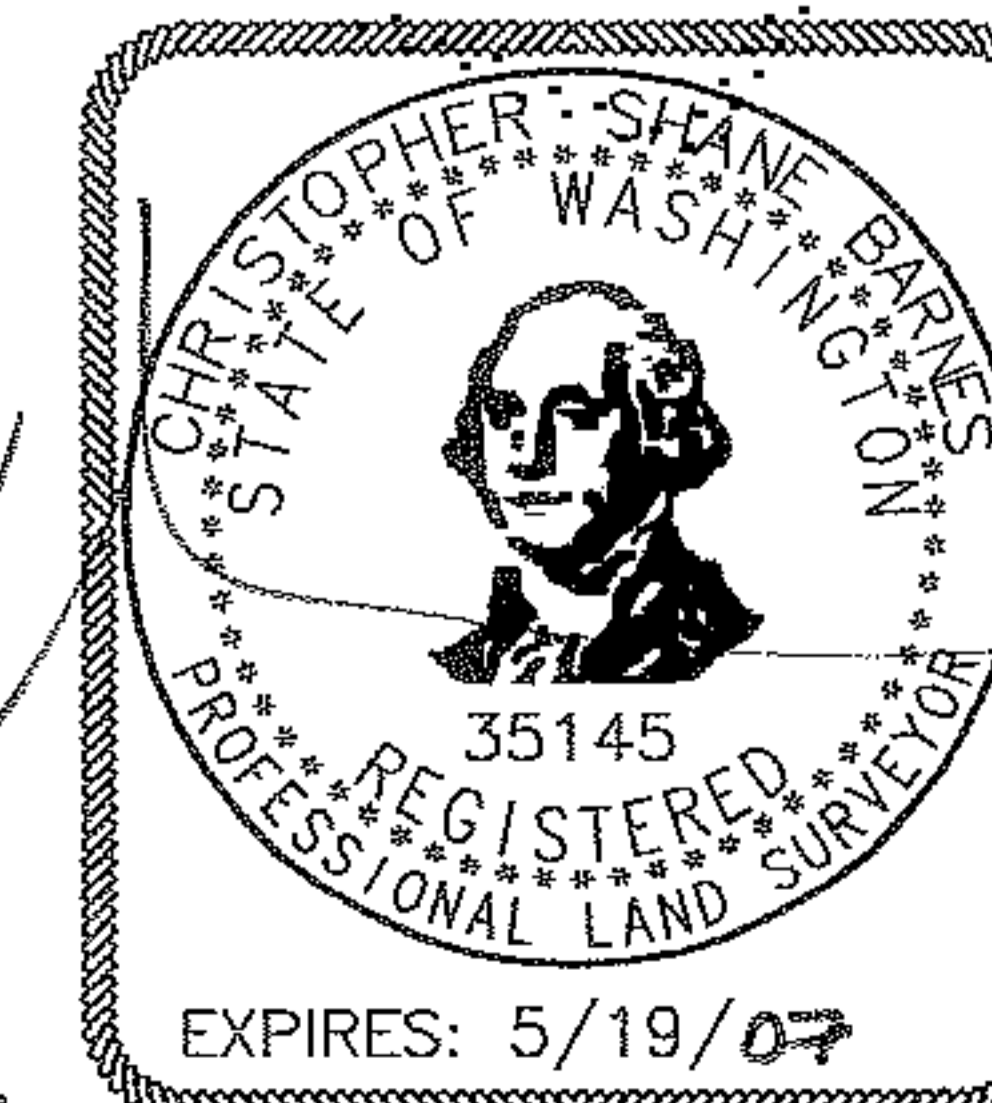
### EQUIPMENT & PROCEDURES

A 5" ELECTRONIC TOTAL STATION WAS USED FOR THIS FIELD TRAVERSE  
SURVEY. ACCURACY MEETS OR EXCEEDS W.A.C. 332-130-090.

### REFERENCES

1. RIGHT-OF-WAY RESOLUTION RECORDED IN VOLUME 157 OF SURVEYS,  
AT PAGES 245-245H, UNDER RECORDING NUMBER 20030203900002.

LINE TABLE		
LINE	LENGTH	BEARING
L1	13.02	N 02'19'45" E
L2	16.66	N 87'40'15" W
L3	16.74	N 87'40'15" W
L4	19.99	N 02'19'45" E



10/24/06



**Mead Gilman & Assoc.**

Professional Land Surveyors

P.O. BOX 289, WOODINVILLE, WA 98072  
PHONE: (425) 486-1252 FAX: (425) 486-6108

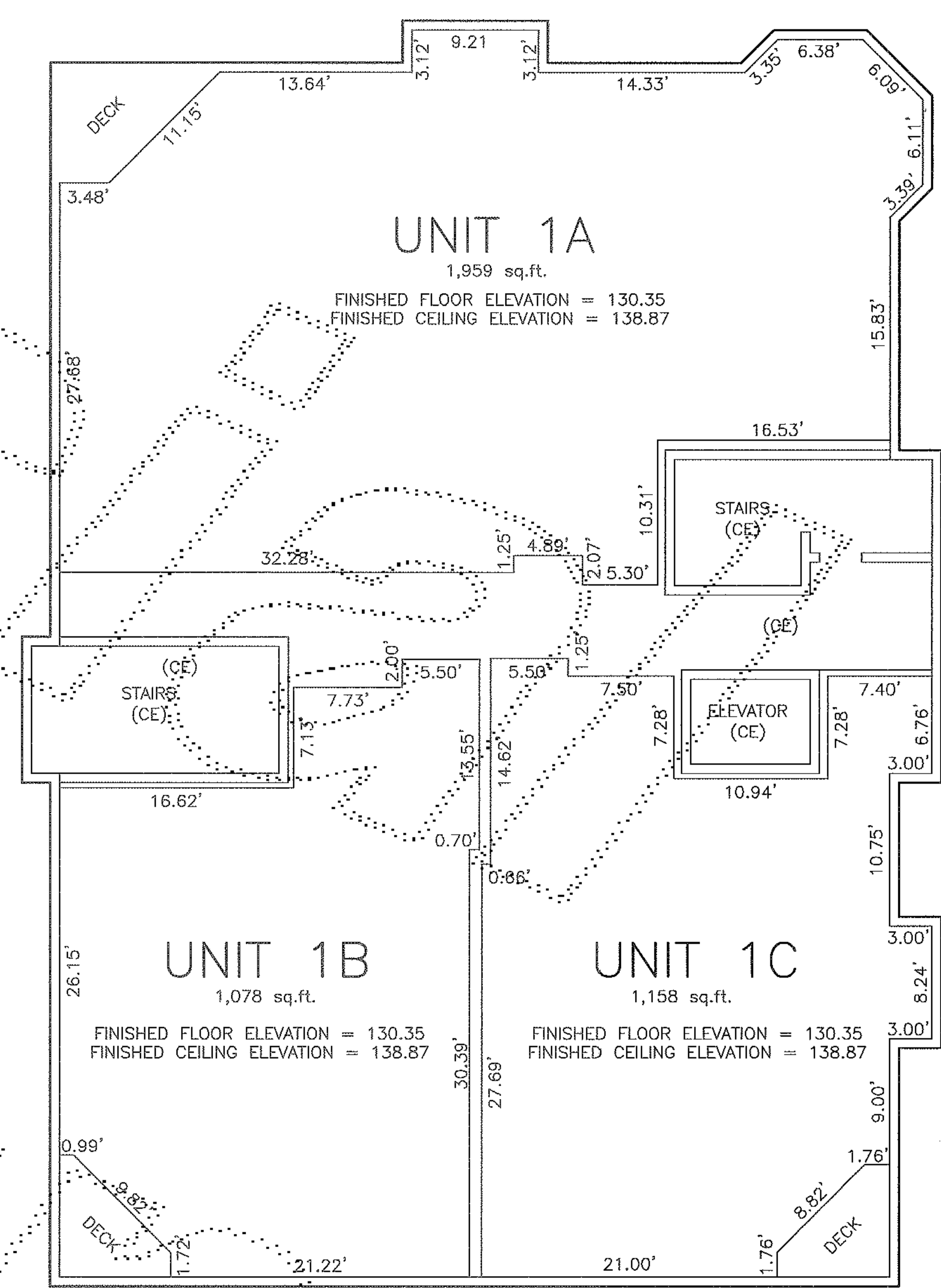
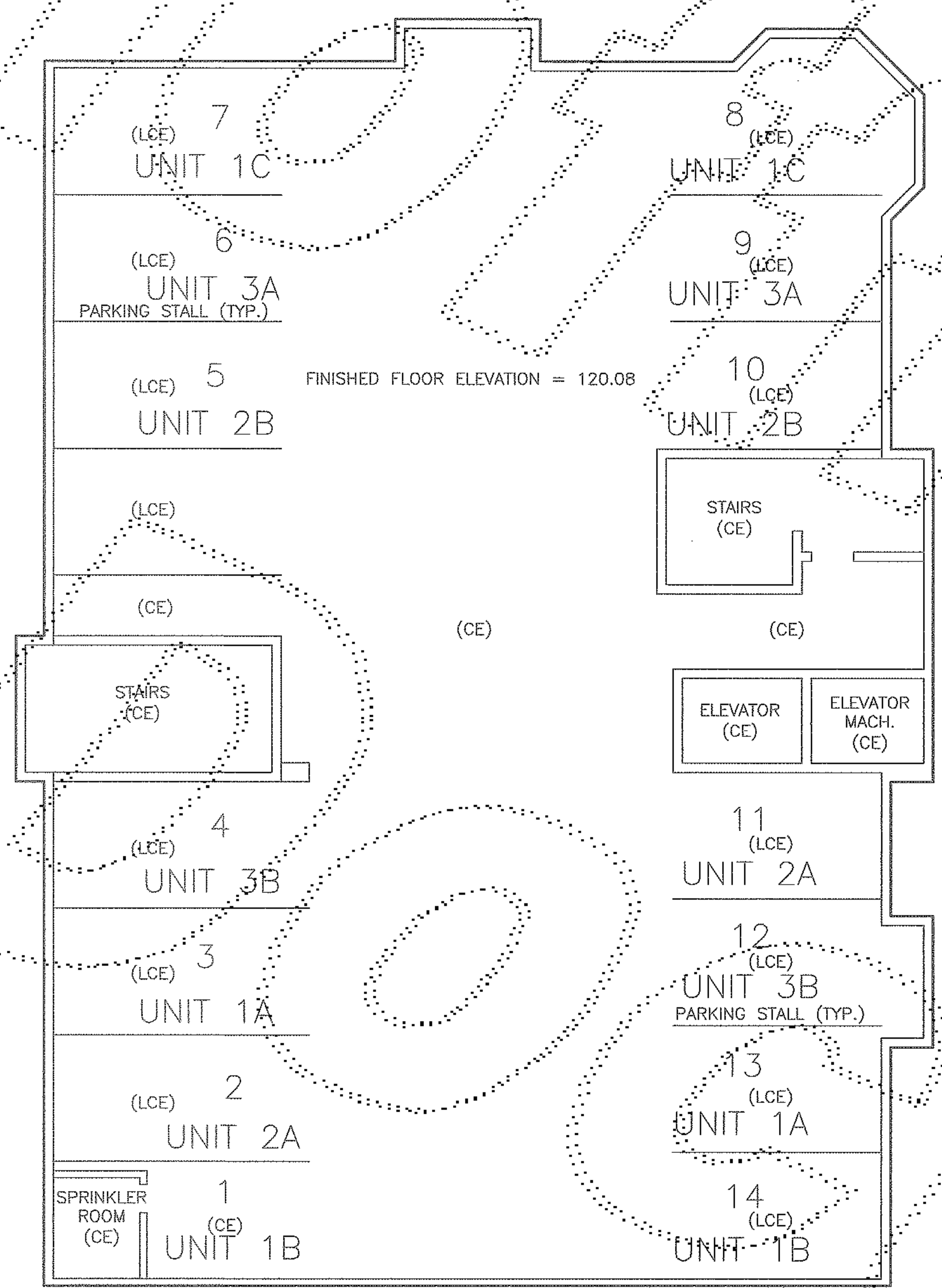
DRAWN BY: MRP	DATE: 9-11-06	DRAWING NO: 05228
REV. BY:	SCALE: 1" = 20'	SHEET: 2 OF 4

# FIFTH AVENUE AT SUNSET CONDOMINIUMS

A CONDOMINIUM  
PORTION OF THE NE1/4, NW1/4, SEC. 34, T. 24 N., R. 6 E., W.M.  
KING COUNTY, WASHINGTON

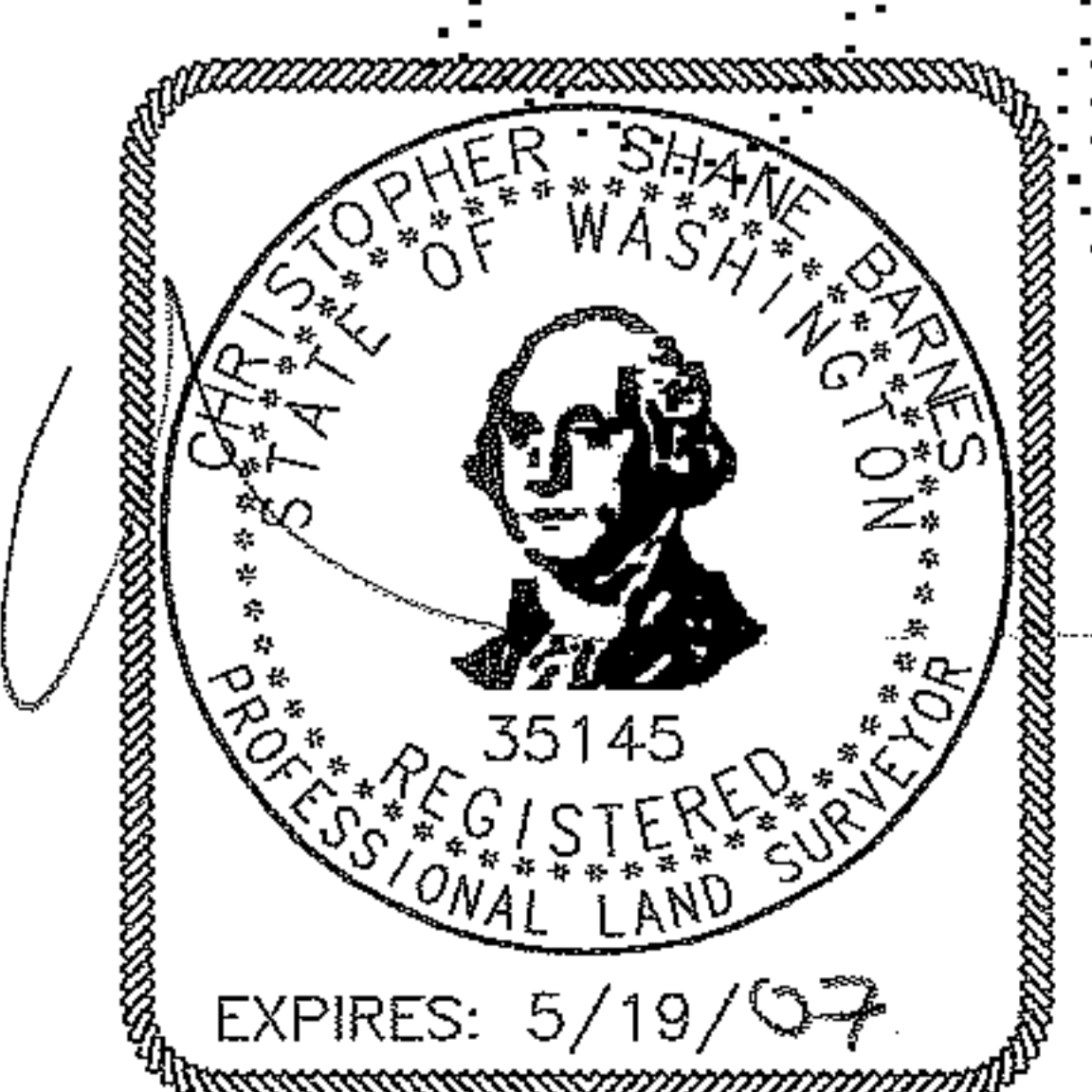
PARKING LEVEL

1ST FLOOR



Scale 1" = 10'

**LEGEND**  
 C.E. COMMON ELEMENT  
 L.C.E. LIMITED COMMON ELEMENT



**Mead Gilman & Assoc.**

Professional Land Surveyors

P.O. BOX 289, WOODINVILLE, WA 98072  
PHONE: (425) 486-1252 FAX: (425) 486-6108

DRAWN BY: MRP	DATE: 9-11-06	DRAWING NO. 05228
REV. BY:	SCALE: 1" = 20'	SHEET 3 OF 4

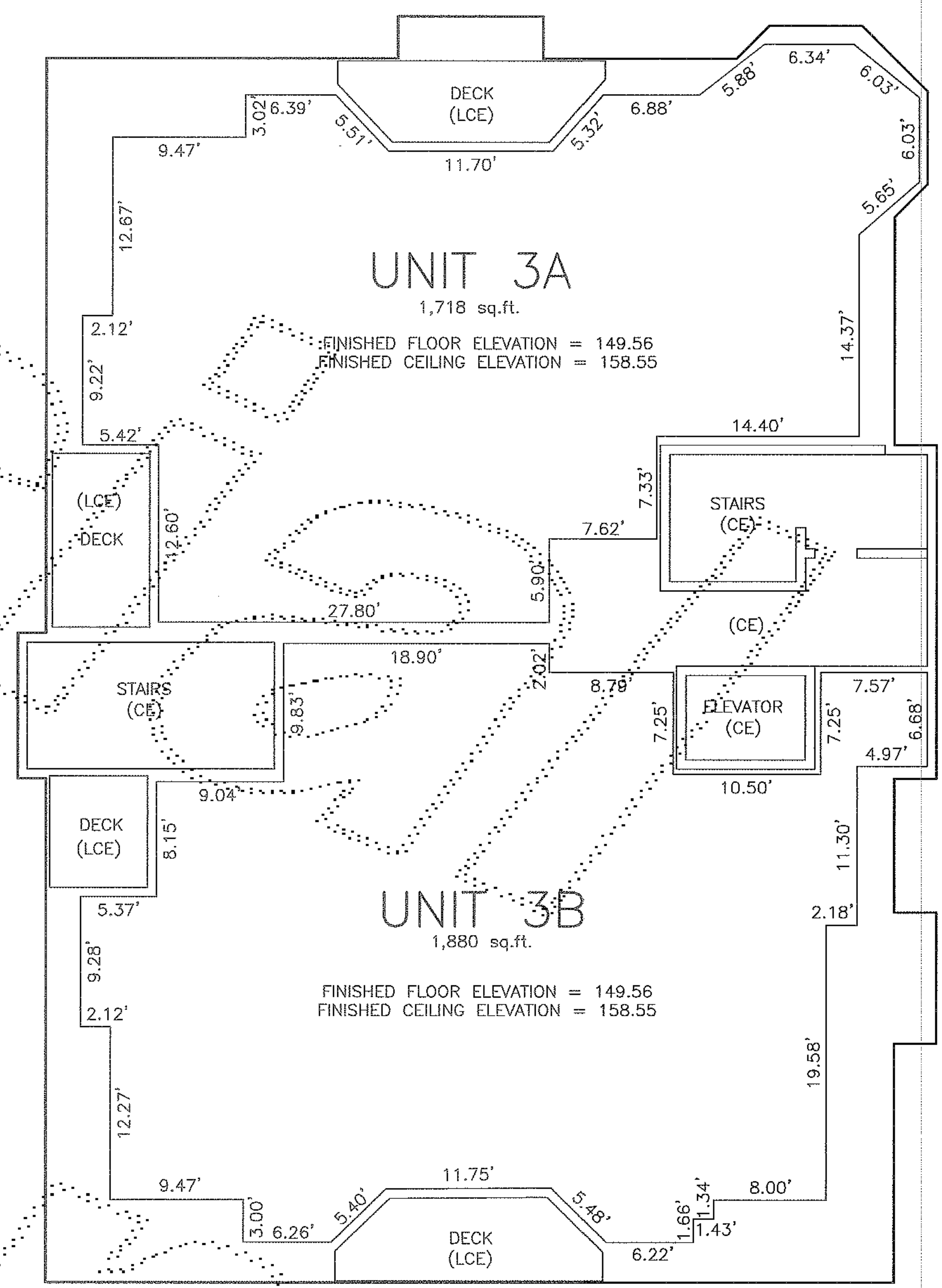
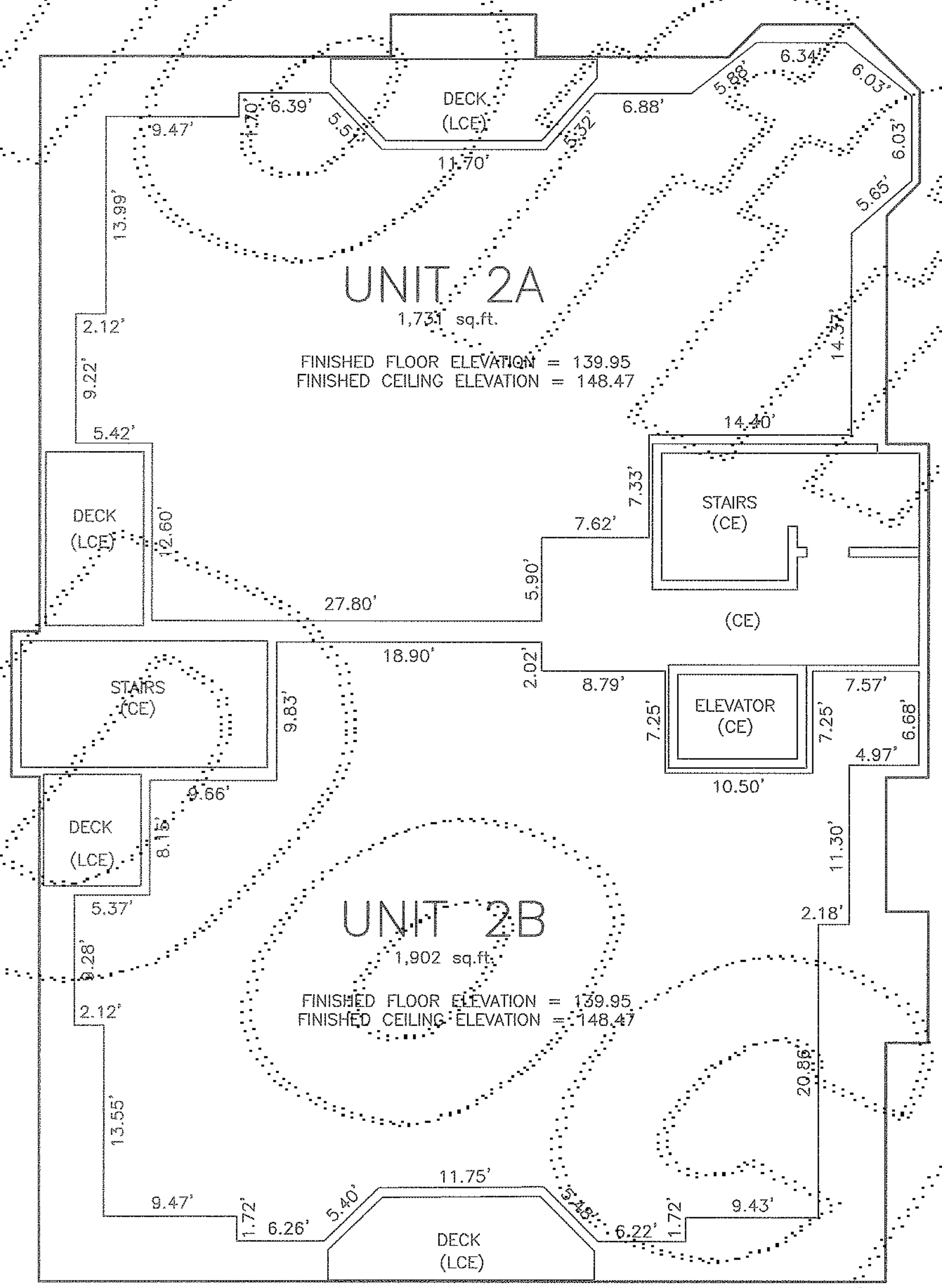
10/24/06

# FIFTH AVENUE AT SUNSET CONDOMINIUMS

A CONDOMINIUM  
PORTION OF THE NE1/4, NW1/4, SEC. 34, T. 24 N., R. 6 E., W.M.  
KING COUNTY, WASHINGTON

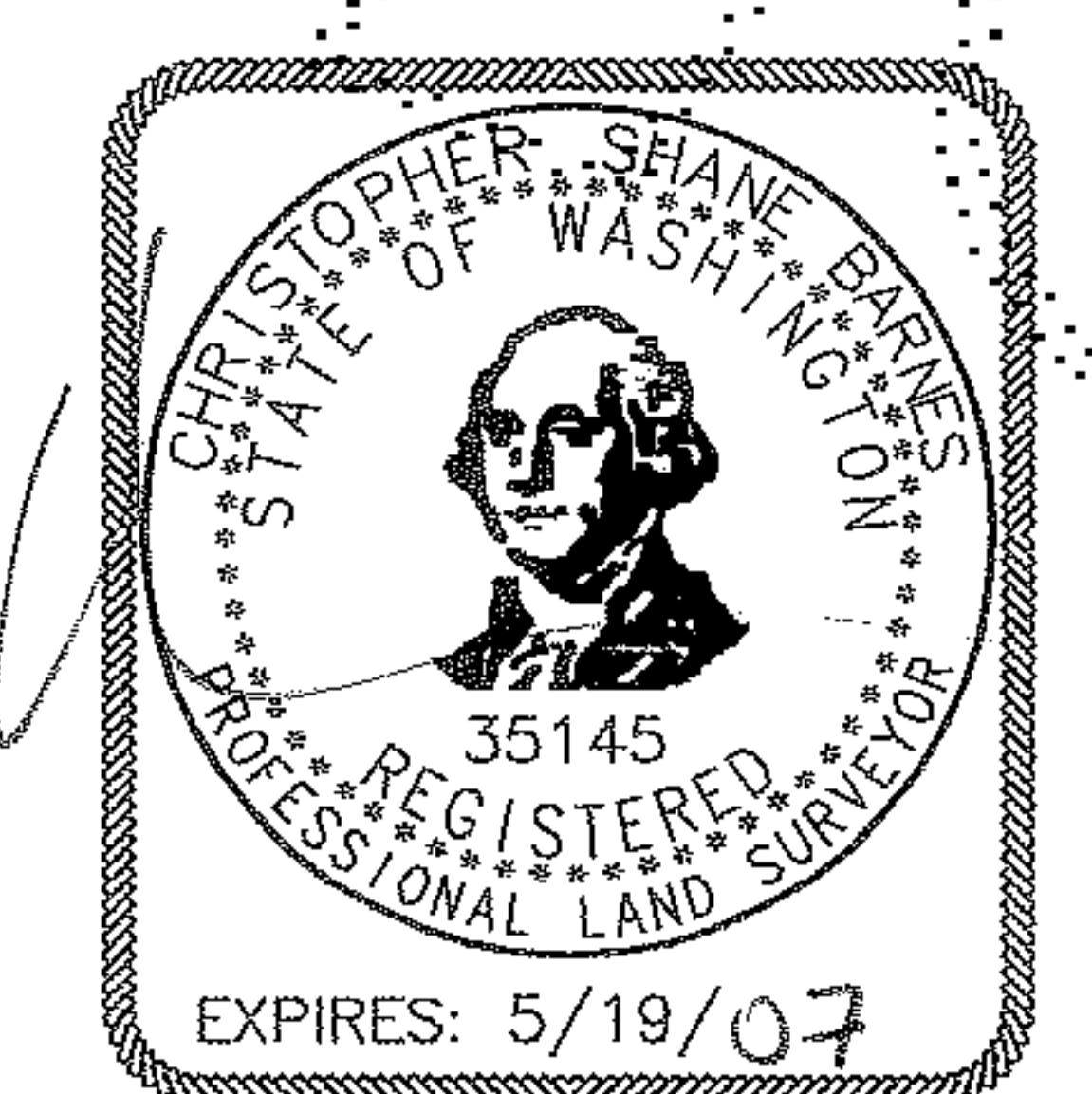
## 2ND FLOOR

## 3RD FLOOR



Scale 1" = 10'

**LEGEND**  
 C.E. COMMON ELEMENT  
 L.C.E. LIMITED COMMON ELEMENT



10/24/06

<b>MG &amp; A</b>	<b>Mead Gilman &amp; Assoc.</b>	
	Professional Land Surveyors	
P.O. BOX 289, WOODINVILLE, WA 98072		
PHONE: (425) 486-7252 FAX: (425) 486-6108		
DRAWN BY: MRP	DATE: 9-11-06	DRAWING NO. 05228
REV. BY:	SCALE: 1" = 20'	SHEET 4 OF 4