

FOOTHILLS AT ISSAQUAH

PTN. S.W. 1/4, SEC. 34, TWP. 24 N., R. 6 E., W.M.

PTN. N.W. 1/4, SEC. 3, TWP. 23 N., R. 6 E., W.M.

PTN. N.E. 1/4, SEC. 4, TWP. 23 N., R. 6 E., W.M.

CITY OF ISSAQUAH

KING COUNTY

WASHINGTON

LINE	BEARING	DISTANCE
L-1	N21°01'16"E	18.84
L-2	N79°47'00"W	20.76
L-3	N69°04'05"W	15.89
L-4	N36°39'46"E	26.01
L-5	N13°21'46"W	19.14
L-6	N65°34'45"E	13.53
L-7	N10°44'06"E	19.02
L-8	N36°29'16"E	13.00
L-9	N30°27'00"E	16.04
L-10	N 8°38'21"W	23.39
L-11	N 3°44'11"W	20.48
L-12	N19°36'42"W	24.72
L-13	N15°14'09"W	20.01
L-14	N34°40'01"W	26.24
L-15	N25°49'19"W	25.45
L-16	N23°41'38"W	24.35
L-17	N25°04'58"W	21.47
L-18	N42°32'45"E	16.88
L-19	N75°30'12"E	7.22
L-20	N77°39'59"E	16.01
L-21	N 4°09'55"E	6.40
L-22	N85°55'47"W	11.71
L-23	N77°31'04"E	32.10
L-24	N 7°44'52"W	21.15
L-25	N 3°45'50"W	29.68
L-26	N69°56'41"W	11.82
L-27	N 1°51'56"E	20.93
L-28	N24°49'31"W	22.70
L-29	N40°08'43"E	16.31
L-30	N53°58'28"E	7.37
L-31	N88°03'20"E	21.63
L-32	N 6°09'05"W	23.86
L-33	N89°40'17"W	27.64
L-34	N01°59'21"E	2.76
L-35	N65°03'18"W	3.85

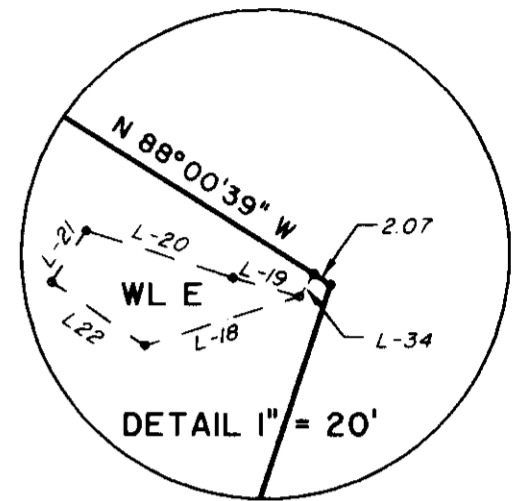
NOTE:

ALL LOTS SHALL HAVE A FRONT YARD SETBACK OF 20 FEET AND A REAR YARD SETBACK OF 10 FEET. LOTS 1 THROUGH 6 AND 26 THROUGH 38 SHALL HAVE A TOTAL SIDERYARD SETBACK OF 10 FEET. LOTS 7 THROUGH 25 SHALL HAVE A TOTAL SIDERYARD SETBACK OF 15 FEET. NO LOT SHALL HAVE A SIDERYARD SETBACK OF LESS THAN 5 FEET.

*** NOTE:**

ACCESS & UTILITY EASEMENT TO BENEFIT PROPERTIES ABUTTING THE NORTH BOUNDARY OF THIS PLAT AT THE LOCATION DEPICTED. N.G.P.E. RESTRICTIONS DESCRIBED IN NOTE 7 SHEET 2 SHALL NOT APPLY TO THIS 24 FOOT WIDE CORRIDOR.

UNPLATTED



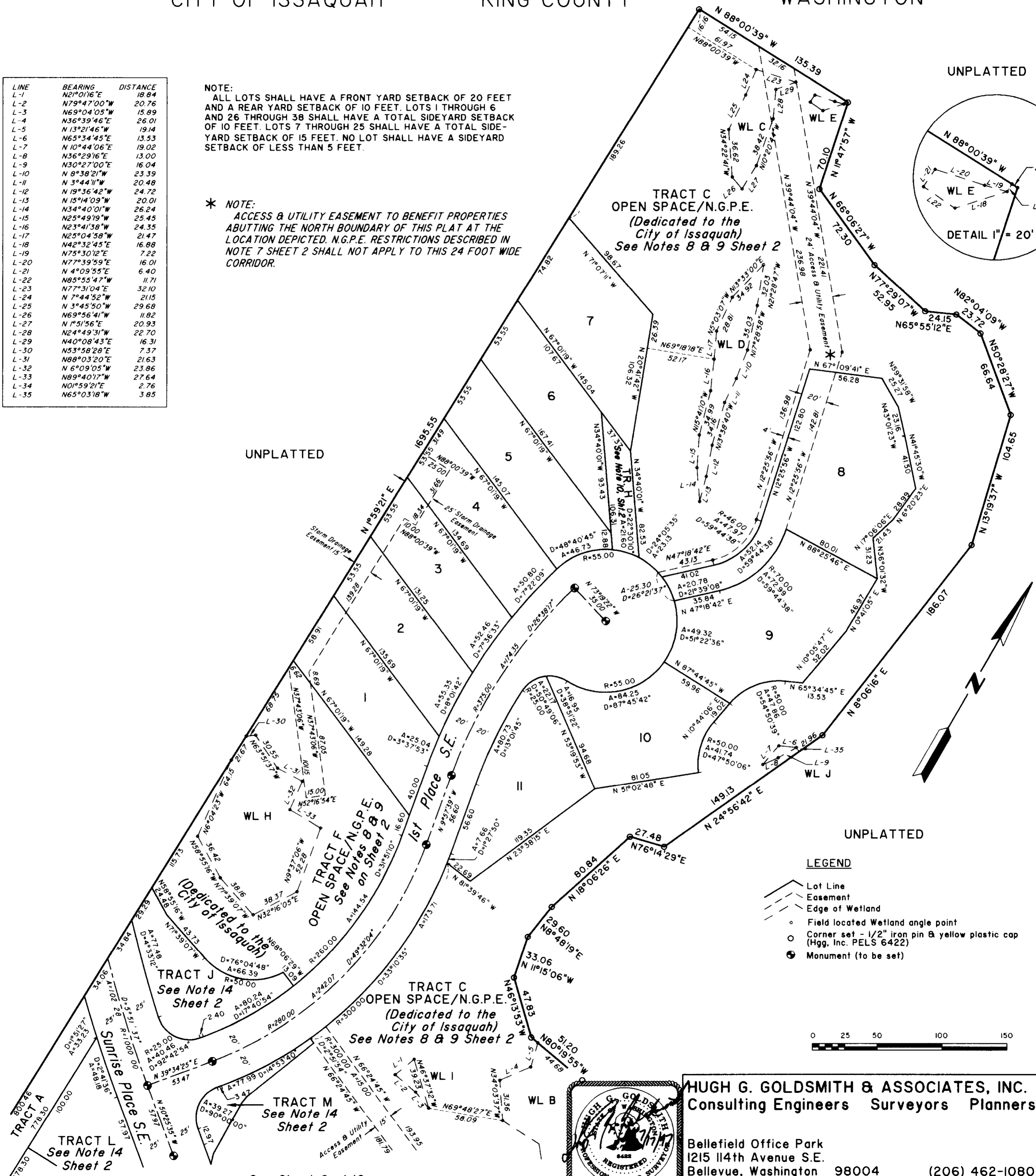
TRACT C
OPEN SPACE/N.G.P.E.
(Dedicated to the
City of Issaquah)
See Notes 8 & 9 Sheet 2

UNPLATTED

UNPLATTED

LEGEND

- Lot Line
- Easement
- Edge of Wetland
- Field located Wetland angle point
- Corner set - 1/2" iron pin & yellow plastic cap (Hgg. Inc. PELS 6422)
- Monument (to be set)



HUGH G. GOLDSMITH & ASSOCIATES, INC.
 Consulting Engineers Surveyors Planners
 Bellefield Office Park
 1215 114th Avenue S.E.
 Bellevue, Washington 98004 (206) 462-1080

M:\ACAD\PLATS\94\94670F 94670F KAUSTE 07/17/97 08:39