

# FOOTHILLS AT ISSAQUAH

PTN. S.W. 1/4, SEC. 34, TWP. 24 N., R. 6 E., W.M.

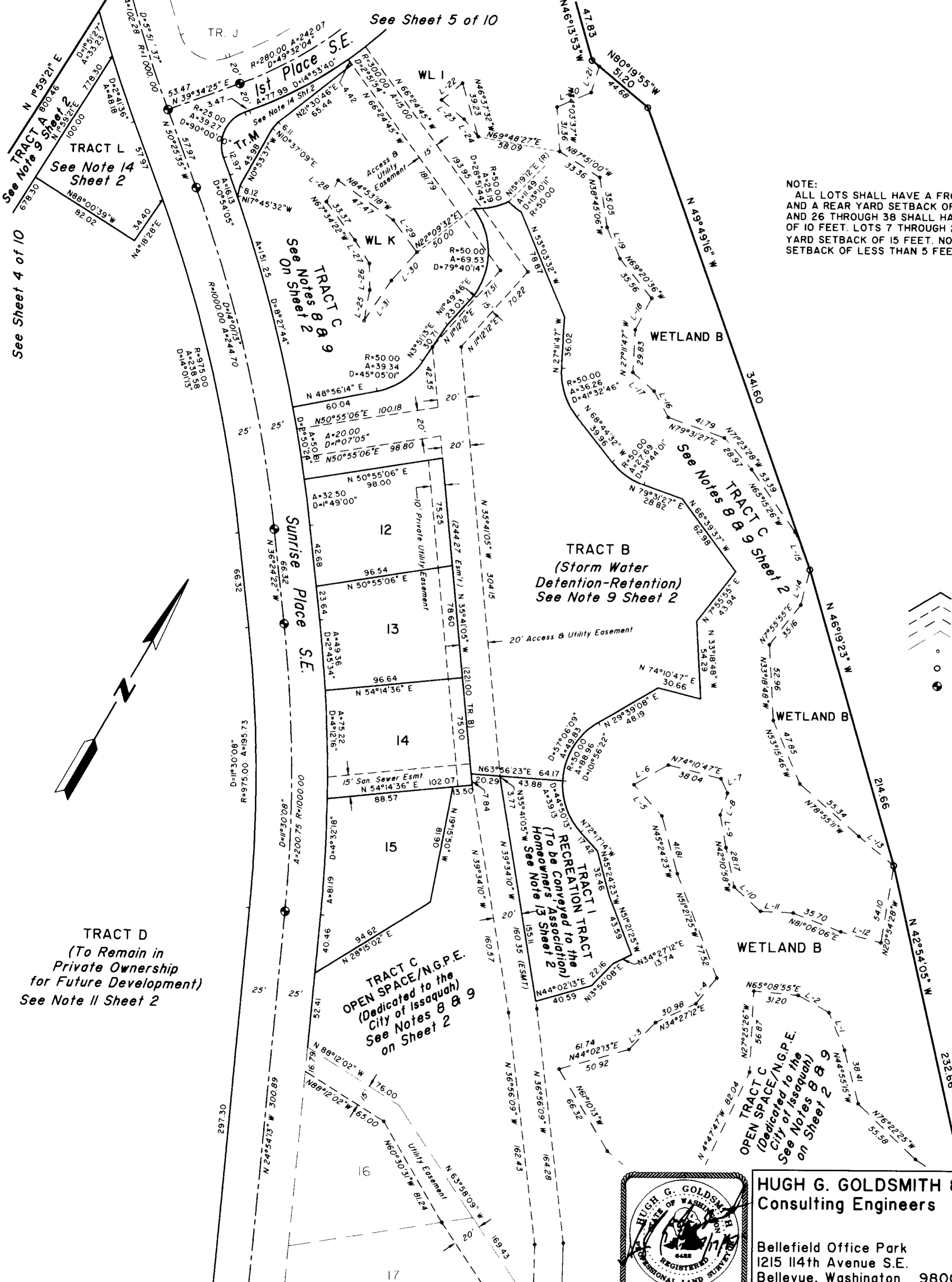
PTN. N.W. 1/4, SEC. 3, TWP. 23 N., R. 6 E., W.M.

PTN. N.E. 1/4, SEC. 4, TWP. 23 N., R. 6 E., W.M.

CITY OF ISSAQUAH

KING COUNTY

WASHINGTON



**NOTE:**  
 ALL LOTS SHALL HAVE A FRONT YARD SETBACK OF 20 FEET AND A REAR YARD SETBACK OF 10 FEET. LOTS 1 THROUGH 6 AND 26 THROUGH 38 SHALL HAVE A TOTAL SIDEYARD SETBACK OF 10 FEET. LOTS 7 THROUGH 25 SHALL HAVE A TOTAL SIDEYARD SETBACK OF 15 FEET. NO LOT SHALL HAVE A SIDEYARD SETBACK OF LESS THAN 5 FEET.

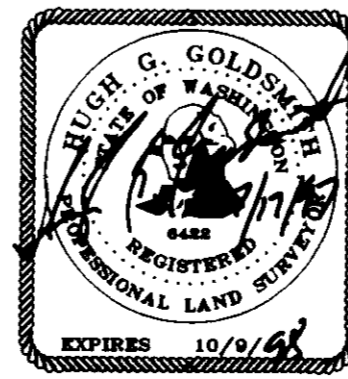
### LEGEND

- Lot Line
- Easement
- Edge of Wetland
- Adjacent Lot Line
- Field located Wetland angle point
- Corner set - 1/2" iron pin & yellow plastic cap (Hgg. Inc. PELS 6422)
- Monument (to be set)

LINE	BEARING	DISTANCE
L-1	N52°39'14"W	28.59
L-2	N88°51'45"E	24.67
L-3	N13°56'08"E	26.56
L-4	N 9°05'10"E	23.14
L-5	N72°17'14"W	29.37
L-6	N29°39'08"E	27.72
L-7	N54°35'49"W	11.13
L-8	N 11°44'21"W	15.90
L-9	N40°25'52"W	23.28
L-10	N78°02'26"W	24.89
L-11	N62°37'24"E	23.03
L-12	N74°28'55"E	29.04
L-13	N80°08'13"W	31.93
L-14	N 15°47'57"W	25.40
L-15	N51°54'51"W	28.21
L-16	N58°51'21"W	20.71
L-17	N79°02'53"W	19.87
L-18	N 2°50'47"W	24.88
L-19	N53°03'32"W	23.37
L-20	N36°39'46"E	26.01
L-21	N 13°21'46"W	19.14
L-22	N21°01'16"E	18.84
L-23	N79°47'00"W	20.76
L-24	N69°04'05"W	15.89
L-25	N 19°50'05"W	21.98
L-26	N 31°11'12"W	18.49
L-27	N62°14'45"W	19.12
L-28	N 1°13'10"W	17.04
L-29	N67°00'23"W	27.83
L-30	N 11°49'46"E	26.52
L-31	N 3°51'13"E	34.20



See Sheet 7 of 10



**HUGH G. GOLDSMITH & ASSOCIATES, INC.**  
 Consulting Engineers Surveyors Planners

Bellefield Office Park  
 1215 114th Avenue S.E.  
 Bellevue, Washington 98004 (206) 462-1080

SHEET 6 OF 10 SHEETS