

FOOTHILLS AT ISSAQUAH

PTN. S.W. 1/4, SEC. 34, TWP. 24 N., R. 6 E., W.M.

PTN. N.W. 1/4, SEC. 3, TWP. 23 N., R. 6 E., W.M.

PTN. N.E. 1/4, SEC. 4, TWP. 23 N., R. 6 E., W.M.

CITY OF ISSAQUAH

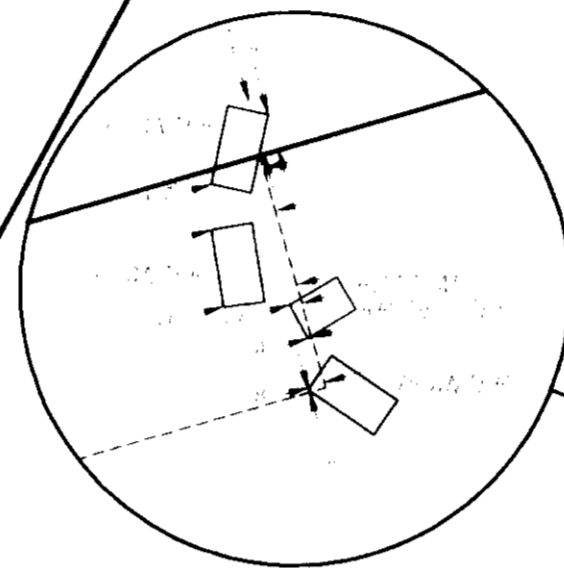
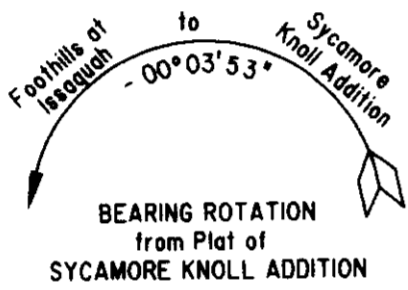
KING COUNTY

WASHINGTON

See Sheet 8 of 10

LEGEND

- Lot Line
- Adjacent Plat Lot Line
- Corner set - 1/2" iron pin & yellow plastic cap (Hgg, Inc. PELS 6422)



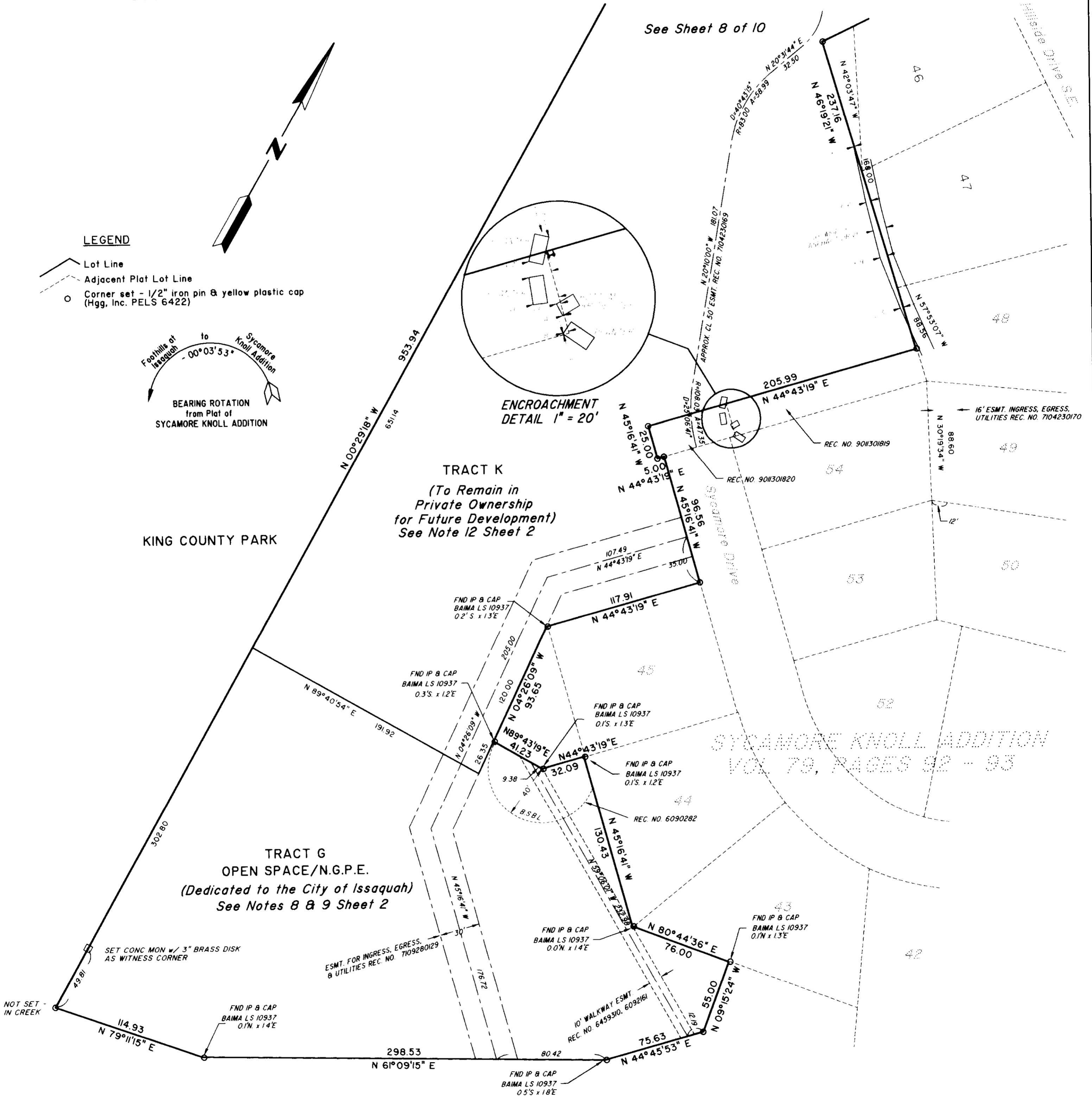
TRACT K
(To Remain in Private Ownership for Future Development)
See Note 12 Sheet 2

KING COUNTY PARK

TRACT G
OPEN SPACE/N.G.P.E.
(Dedicated to the City of Issaquah)
See Notes 8 & 9 Sheet 2

SYCAMORE KNOLL ADDITION
VOL. 79, PAGES 92 - 93

UNPLATTED



HUGH G. GOLDSMITH & ASSOCIATES, INC.
Consulting Engineers Surveyors Planners

Bellefield Office Park
1215 114th Avenue S.E.
Bellevue, Washington 98004 (206) 462-1080

SHEET 9 OF 10 SHEETS