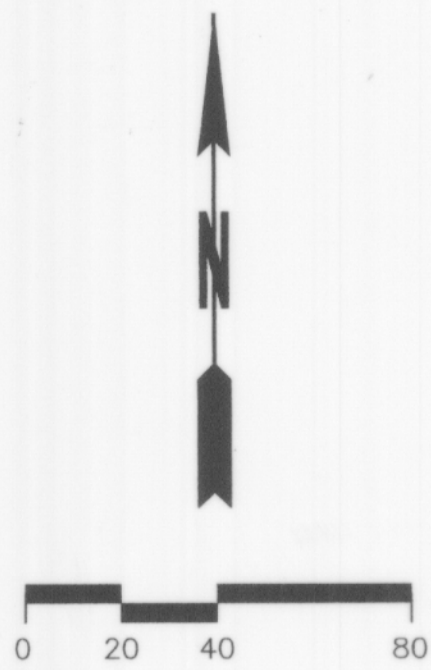


PLAT ALTERATION NO.1

FOOTHILLS AT ISSAQUAH

A PORTION OF THE SW 1/4, SECTION 24, T.24N., R.6E., W.M.
CITY OF ISSAQUAH, KING COUNTY, WASHINGTON

(FOR STATEMENT OF PURPOSE SEE NOTE 1, SURVEYORS NOTES)



UNPLATTED

LEGEND

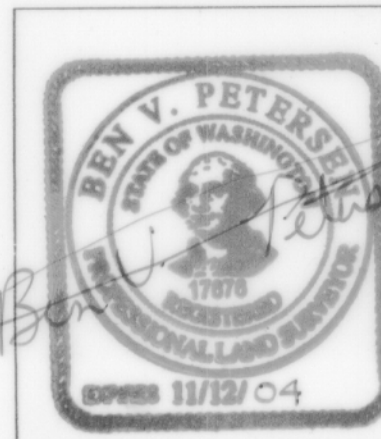
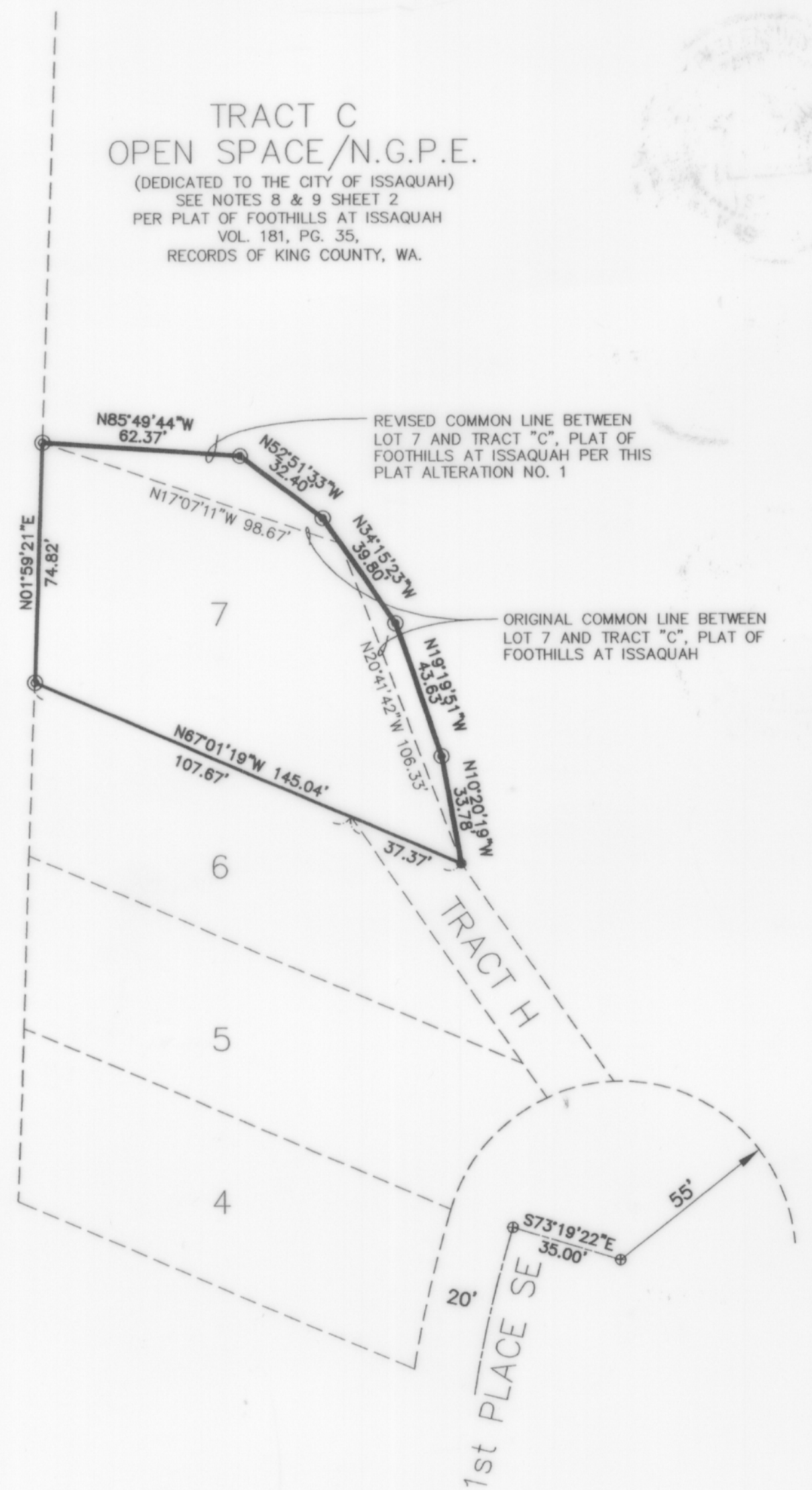
- ⊙ # 4 REBAR AND CAP "HGG INV. PELD 6422" FOUND BY M.S. WEBB SURVEYING DURING NOVEMBER 2001
- TACK W/BRASS TAG "WEBB 16230" IN LEAD PLUG IN EDGE OF CONC. DRIVE SET BY M.S. WEBB SURVEYING DURING NOVEMBER 2001
- ⊙ # 4 REBAR AND CAP "WEBB LS 16230" SET BY M.S. WEBB SURVEYING DURING NOVEMBER 2001
- ⊕ CASED CONCRETE MONUMENT WITH PUNCHED BRASS CAP; FOUND DURING THE BOUNDARY SURVEY BY M.S. WEBB SURVEYING PERFORMED DURING NOVEMBER 2001

PLAT NOTES

TRACT "C" IS AN OPEN SPACE / NATURAL GROWTH PROTECTION EASEMENT DEDICATED TO AND OWNED BY THE CITY OF ISSAQUAH. THE REMAINING PORTION OF TRACT "C", FOLLOWING THE APPROVAL AND RECORDING OF THIS PLAT ALTERATION, SHALL RETAIN THE SAME RESTRICTIONS AND INTENT AS INDICATED ON THE ORIGINAL PLAT, IN PARTICULAR ON NOTES 7, 8, 9 AND 17, SHEET 2 OF 10 OF THE PLAT OF FOOTHILLS AT ISSAQUAH, AS RECORDED IN VOLUME 181 OF PLATS, ON PAGES 31 THROUGH 40, RECORDS OF KING COUNTY, WASHINGTON.

SURVEYORS NOTES

- 1.) A BOUNDARY AND AS-BUILT SURVEY OF EXISTING IMPROVEMENTS PERTAINING TO LOT 7, MORE PARTICULARLY ROCKERIES ALONG THE EASTERLY AND NORTHERLY LOT LINES, WAS PERFORMED BY M.S. WEBB SURVEYING DURING NOVEMBER 2001.
- 2.) THE RESULTS OF THE ABOVE MENTIONED AS-BUILT SURVEY INDICATED THAT PORTIONS OF THE EXISTING ROCKERIES PERTAINING TO LOT 7 WERE INADVERTENTLY CONSTRUCTED WITHIN A PORTION OF TRACT "C".
- 3.) THE PURPOSE THIS PLAT ALTERATION IS TO ADJUST THE LOT LINES OF LOT 7 AND TRACT "C" ACCORDINGLY SUCH THAT THE ABOVE-MENTIONED ROCKERIES ARE WHOLELY CONTAINED WITHIN THE LIMITS OF LOT 7 AS ADJUSTED BY THIS PLAT ALTERATION.
- 4.) FOUND PLAT MONUMENTS AND LOT CORNERS, AND NEW CORNERS, INDICATED AS BEING ESTABLISHED BY M.S. WEBB SURVEYING DURING THEIR BOUNDARY AND AS-BUILT SURVEY OF NOVEMBER 2001, ARE INDICATED ON THE MAP PORTION OF THIS PLAT ALTERATION AND ARE BASED STRICTLY ON THAT INFORMATION INDICATED ON AN OWNER-PROVIDED COPY (MAP) OF SAID SURVEY.
- 5.) PLS, INC. - PROFESSIONAL LAND SURVEYORS HAS NOT INDEPENDENTLY VERIFIED THE ACTUALITY, ADEQUACY AND / OR ACCURACY OF THE BOUNDARY AND AS-BUILT SURVEY OF LOT 7 PERFORMED BY M.S. WEBB SURVEYING DURING NOVEMBER 2001 AND ACCORDINGLY MAKES NO CERTIFICATION REGARDING THE BOUNDARY SURVEY, AS-BUILT SURVEY RESULTS, FOUND PLAT MONUMENTS AND PROPERTY CORNERS OR NEWLY (NOVEMBER 2001) ESTABLISHED PROPERTY CORNERS.
- 6.) BASIS OF BEARING: THE PLAT OF FOOTHILLS AT ISSAQUAH, AS RECORDED IN VOLUME 181 OF PLAT, ON PAGES 31 THROUGH 40, RECORDS OF KING COUNTY, WASHINGTON.



PLS, Inc.
Professional Land Surveyors
1045 - 12th Ave. N.W., Suite F-6
Issaquah, Washington 98027
(425) 313-9378 (fax) 313-9379