

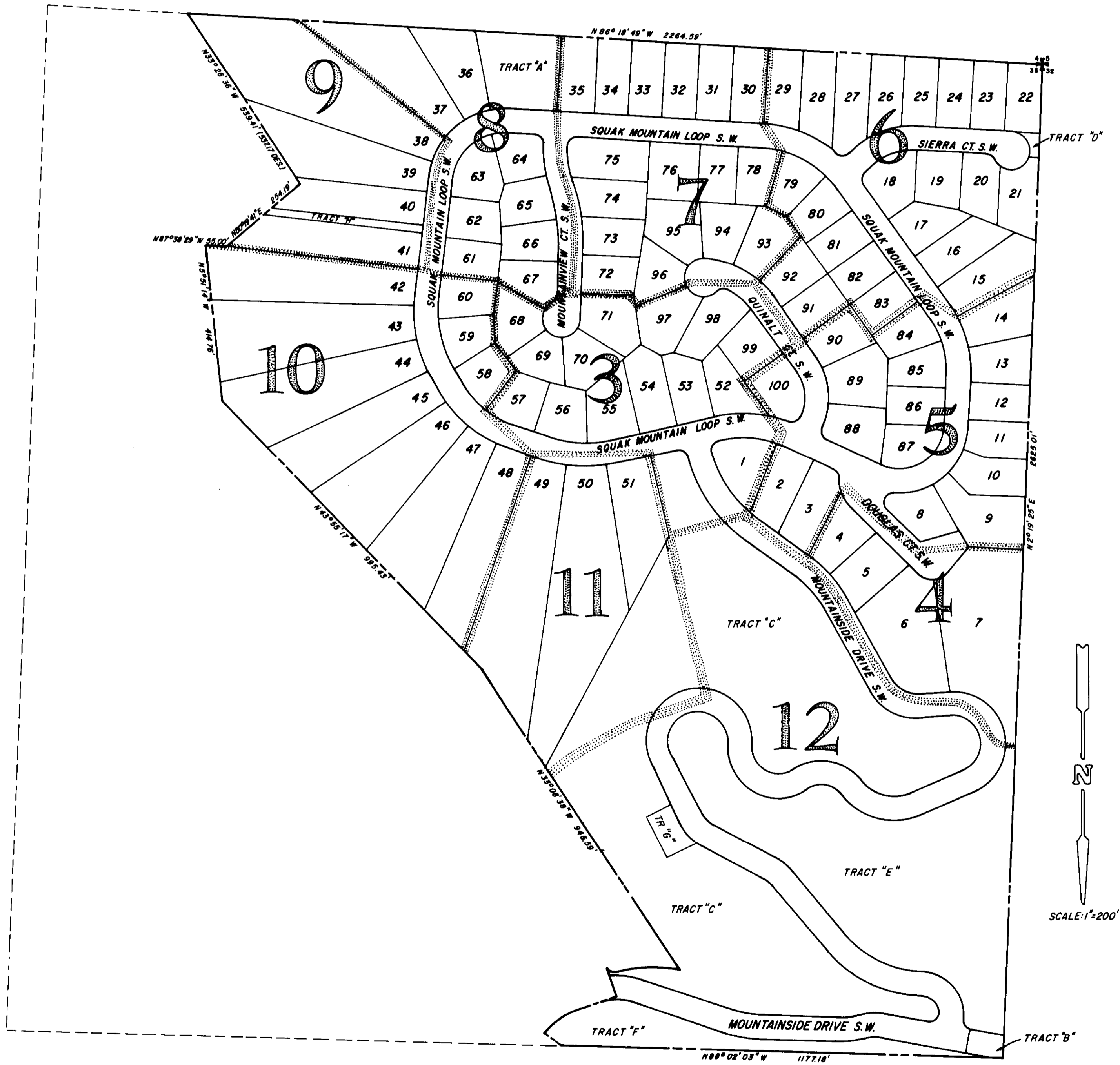
FOREST RIM

S.W. 1/4 SEC.33, T24N, R.6E, W.M.

ISSAQUAH

WASHINGTON

ENGINEER
HUGH G. GOLDSMITH & ASSOC., INC.
SEATTLE, WASHINGTON



INDEX TO MAP SHEETS

SHEET 2 OF 12