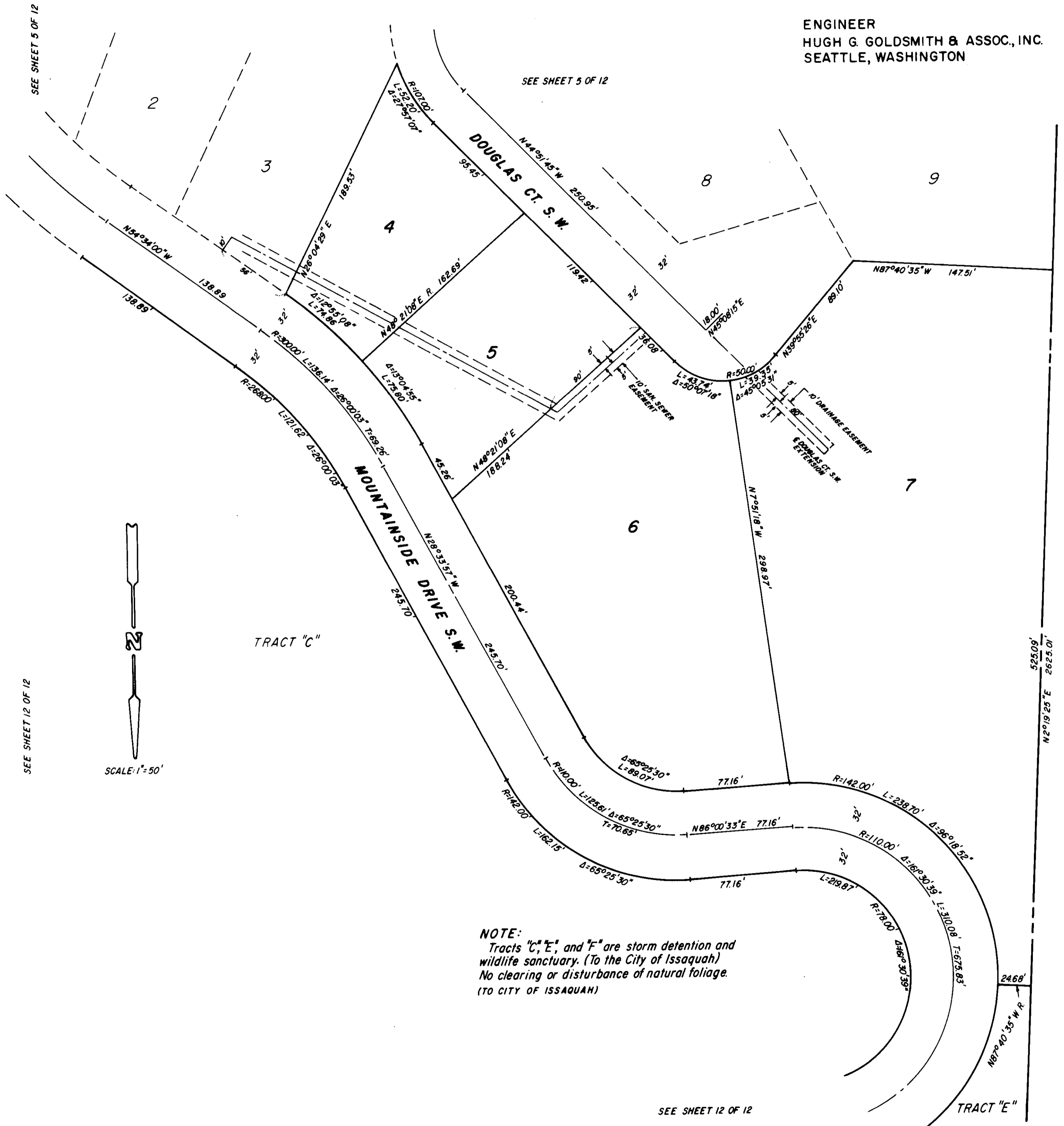


FOREST RIM

S.W. 1/4 SEC.33, T.24N, R.6E, W.M.

ISSAQUAH WASHINGTON

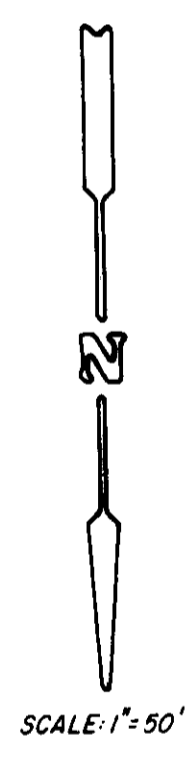
ENGINEER
HUGH G. GOLDSMITH & ASSOC., INC.
SEATTLE, WASHINGTON



SEE SHEET 5 OF 12

SEE SHEET 5 OF 12

SEE SHEET 12 OF 12



TRACT "C"

NOTE:
 Tracts "C", "E", and "F" are storm detention and wildlife sanctuary. (To the City of Issaquah)
 No clearing or disturbance of natural foliage.
 (TO CITY OF ISSAQUAH)

SEE SHEET 12 OF 12

525.09'
N2°19'25"E 2625.01'

UNPLATTED

TRACT "E"