

# FOREST RIM

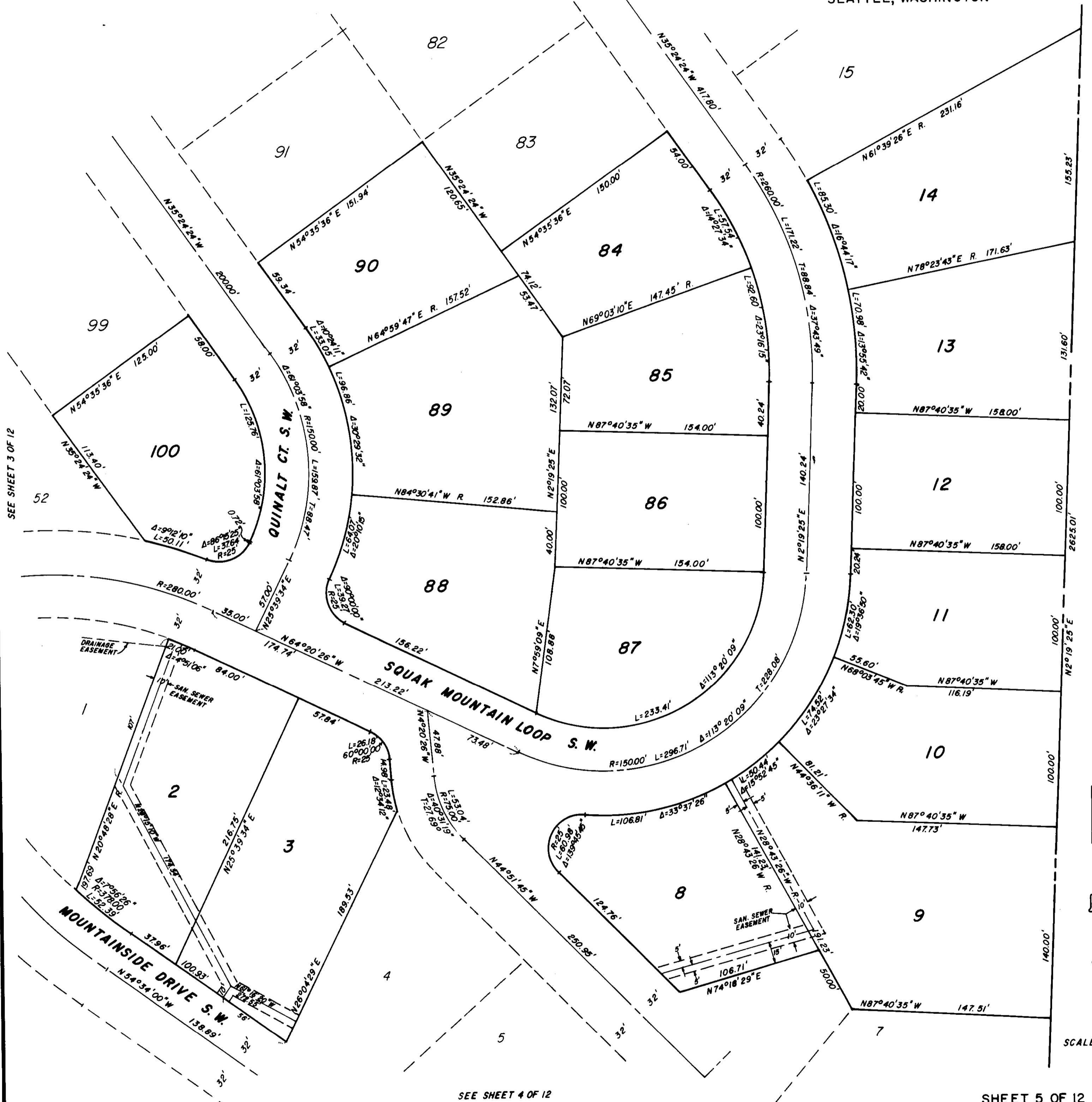
S.W. 1/4 SEC.33, T.24N, R.6E, W.M.

ISSAQUAH

WASHINGTON

ENGINEER  
HUGH G. GOLDSMITH & ASSOC., INC.  
SEATTLE, WASHINGTON

SEE SHEET 6 OF 12



SEE SHEET 3 OF 12

SEE SHEET 4 OF 12

SHEET 5 OF 12

UNPLATTED



SCALE: 1" = 50'