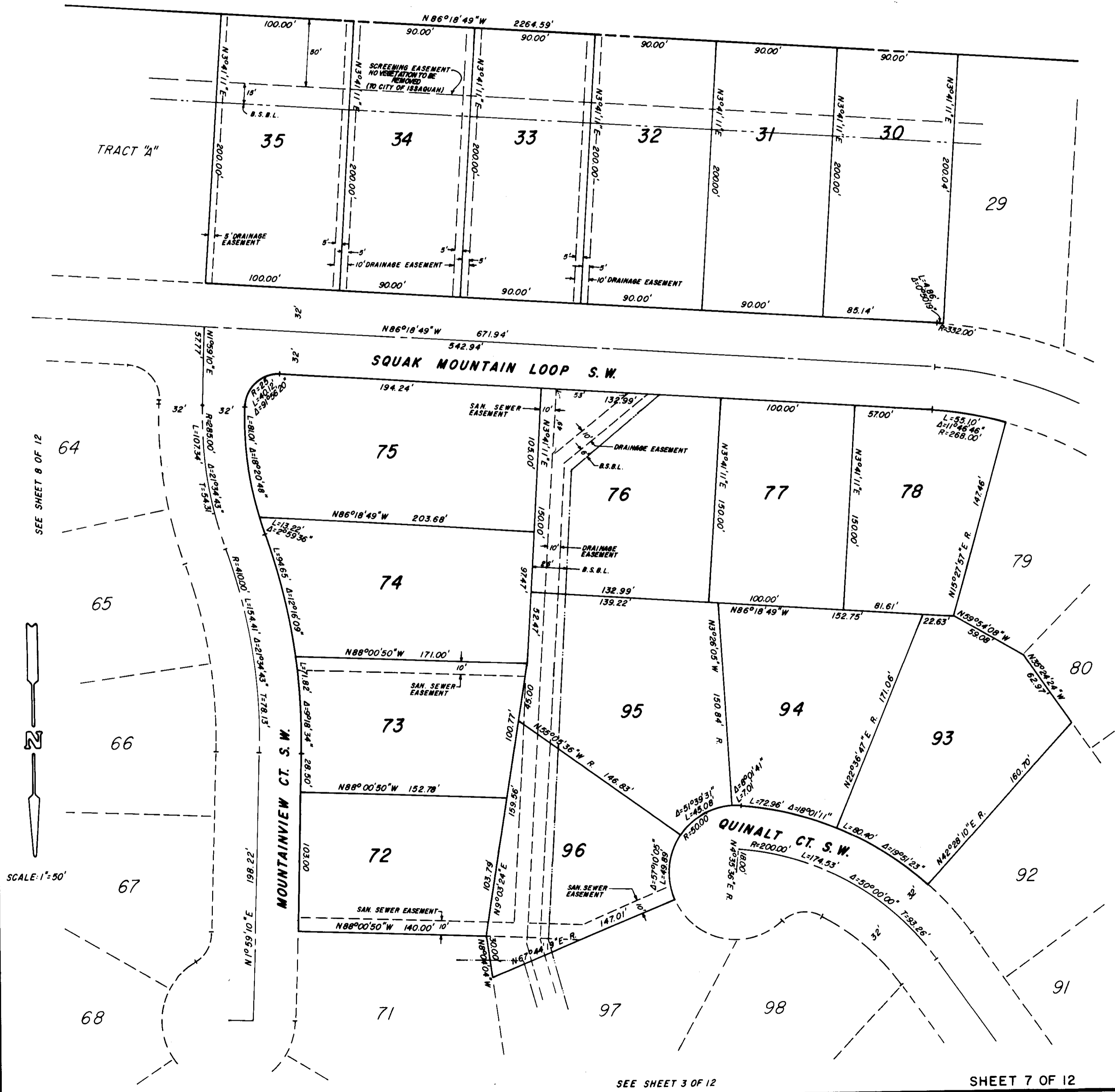


FOREST RIM

S.W. 1/4 SEC.33, T.24N, R.6E, W.M.
ISSAQUAH WASHINGTON

ENGINEER
HUGH G. GOLDSMITH & ASSOC., INC.
SEATTLE, WASHINGTON

UNPLATTED



SEE SHEET 8 OF 12

SEE SHEET 6 OF 12

SEE SHEET 3 OF 12

SHEET 7 OF 12