

FOREST RIM

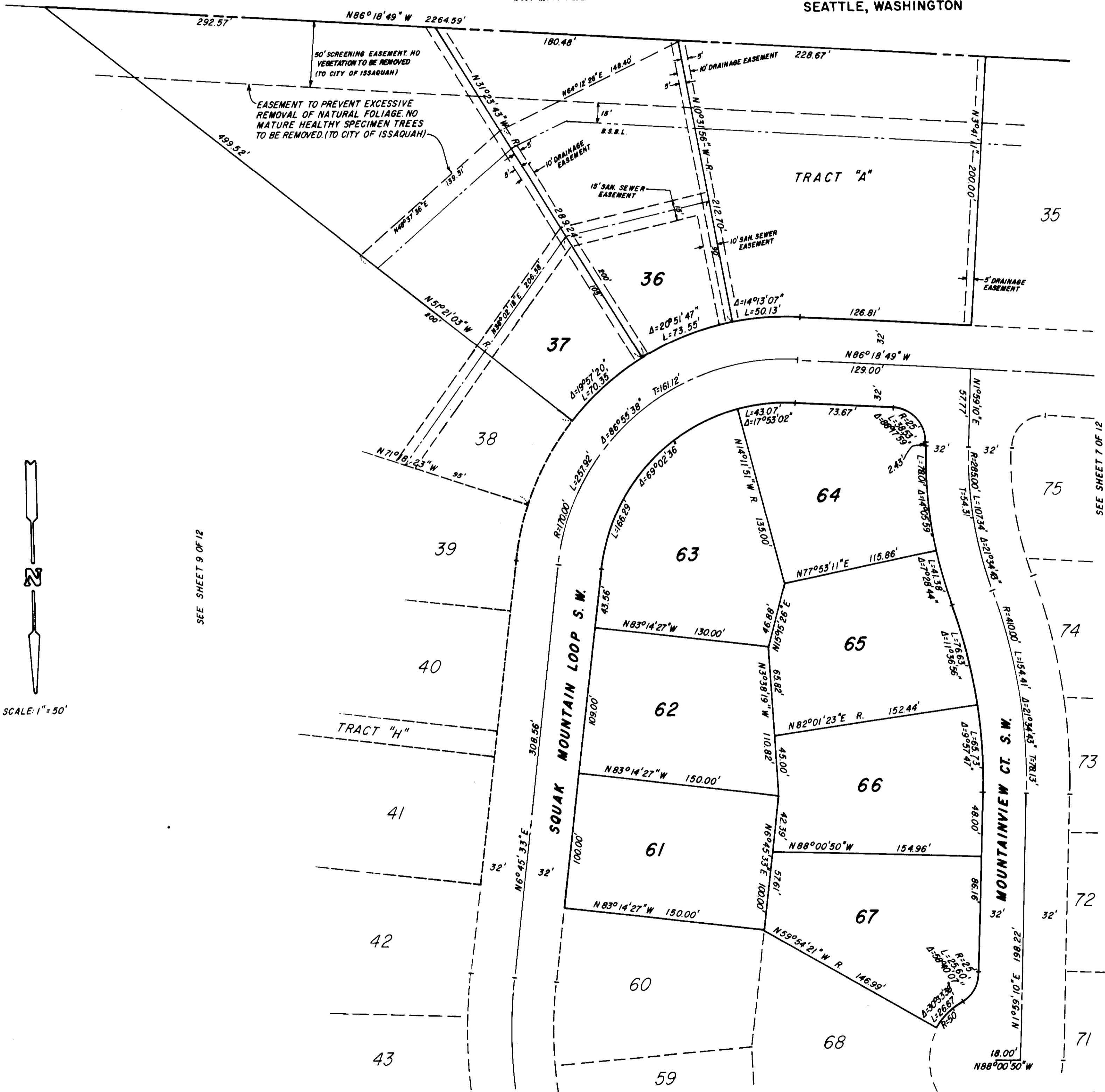
S.W. 1/4 SEC.33, T24N, R.6E, W.M.

ISSAQUAH

WASHINGTON

ENGINEER
HUGH G. GOLDSMITH & ASSOC., INC.
SEATTLE, WASHINGTON

UNPLATTED

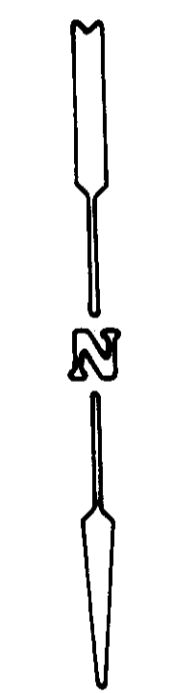


SEE SHEET 9 OF 12

SEE SHEET 7 OF 12

SEE SHEET 3 OF 12

SHEET 8 OF 12



SCALE: 1"=50'

SEE SHEET 10 OF 12