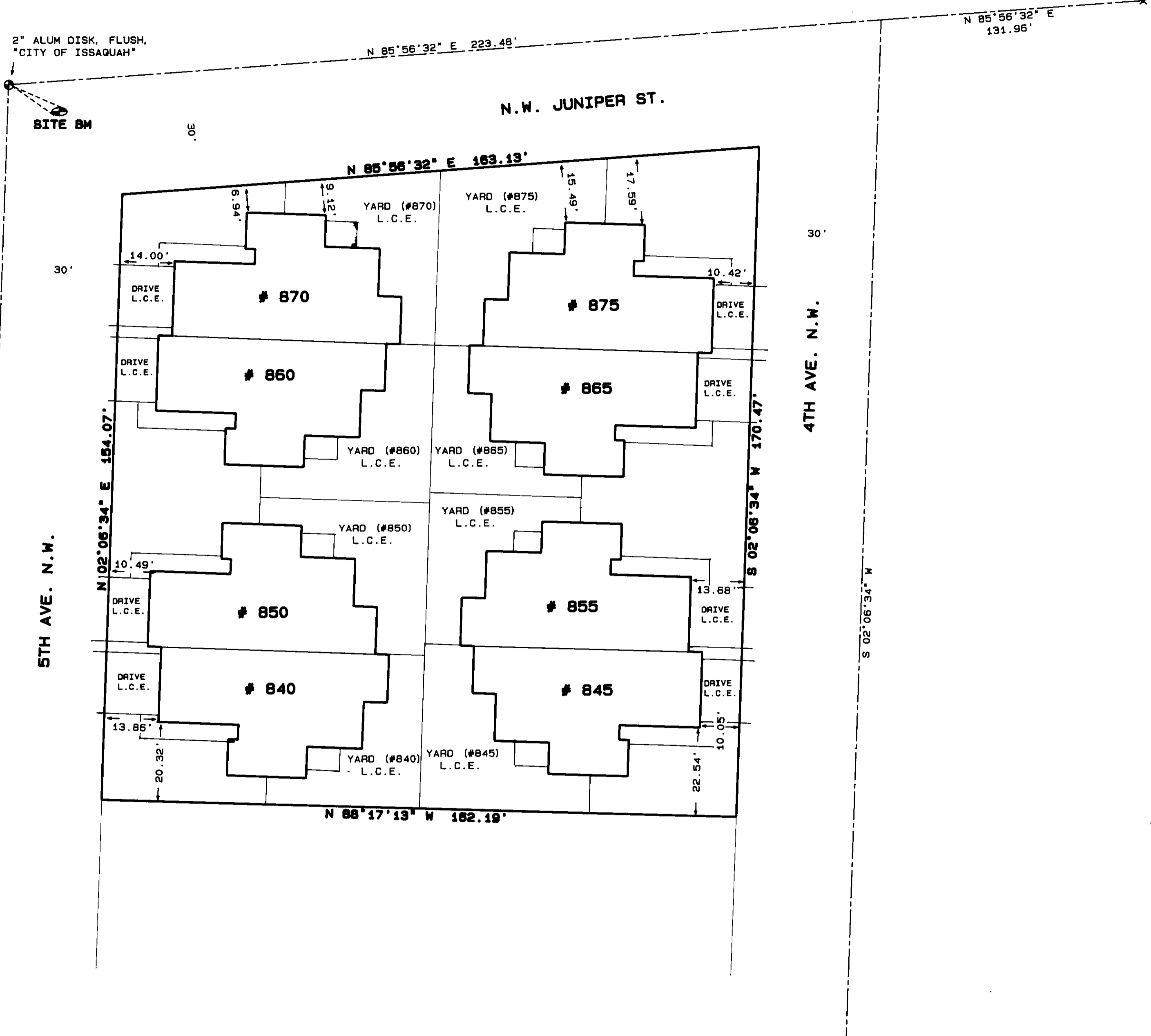


GILMAN STATION
A CONDOMINIUM
SW 1/4, NE 1/4, SEC. 28, TWN. 24N, RGE. 6E, W.M.
KING COUNTY, WASHINGTON

SHT 2 OF 4

EXIST COPPER TK IN CONC
BRIDGE DECK, 12.7' FROM
EAST END (ACCEPTED)

2" ALUM DISK, FLUSH,
"CITY OF ISSAQUAH"



FLOOD PLAIN ELEVATION - 68.77

VERTICAL DATUM - PROJECT DATUM. RR SPIKE IN NE FACE OF PWR POLE
AT SW CORNER OF 5TH AND JUNIPER. ELEV = 70.00

SITE BM - TOP OF ALUMINUM DISK AT INTERSECTION OF 5TH AVE. N.W.
AND N.W. JUNIPER ST. ELEV = 68.72.

GAS PIPELINE EASEMENT, REC. NO. 9704280262, IS NOT LOCATABLE BY
DESCRIPTION.

MERIDIAN - ASSUMED

FOR COMPLETE HORIZONTAL CONTROL INFORMATION,
REFERENCE BOUNDARY/TOPO SURVEY BY BAIMA &
HOLMBERG, INC., SHT 1 OF 1, JOB NO.
1004-008, DTD 7/30/96.

C.&C. Surveying

Surveys and Engineering

7339 40th Avenue N.E., Seattle, Washington 98115 (206) 523-1654

SITE PLAN
1" = 20'

140 67
649702.MAP