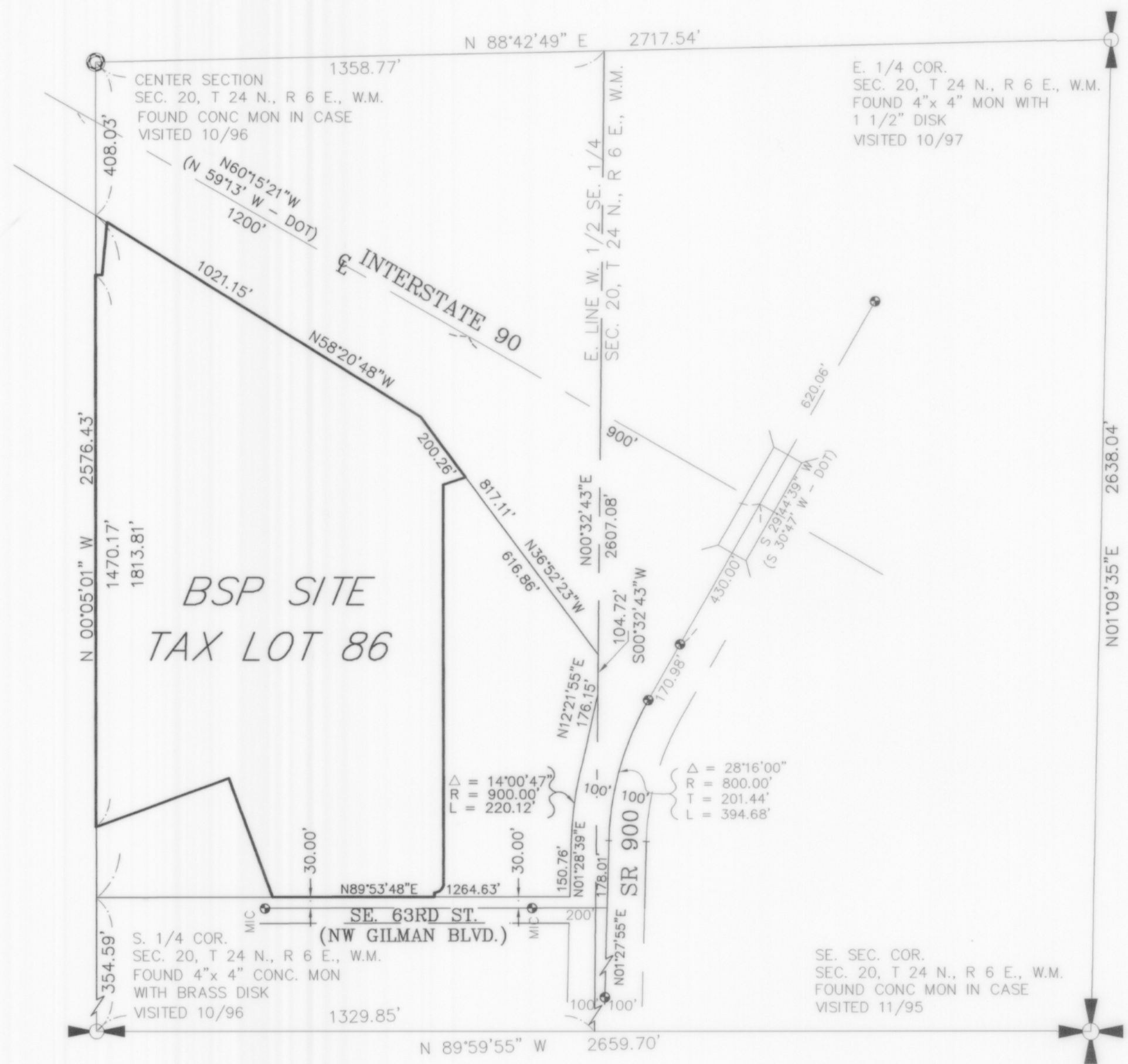


HYLA, A BINDING SITE PLAN AMENDMENT NO. 1

PORTION OF SE 1/4, SECTION 20, T. 24 N., R. 6 E., W.M.
CITY OF ISSAQUAH, KING COUNTY, WASHINGTON.
BSP 97-01 (PLN04-00099)



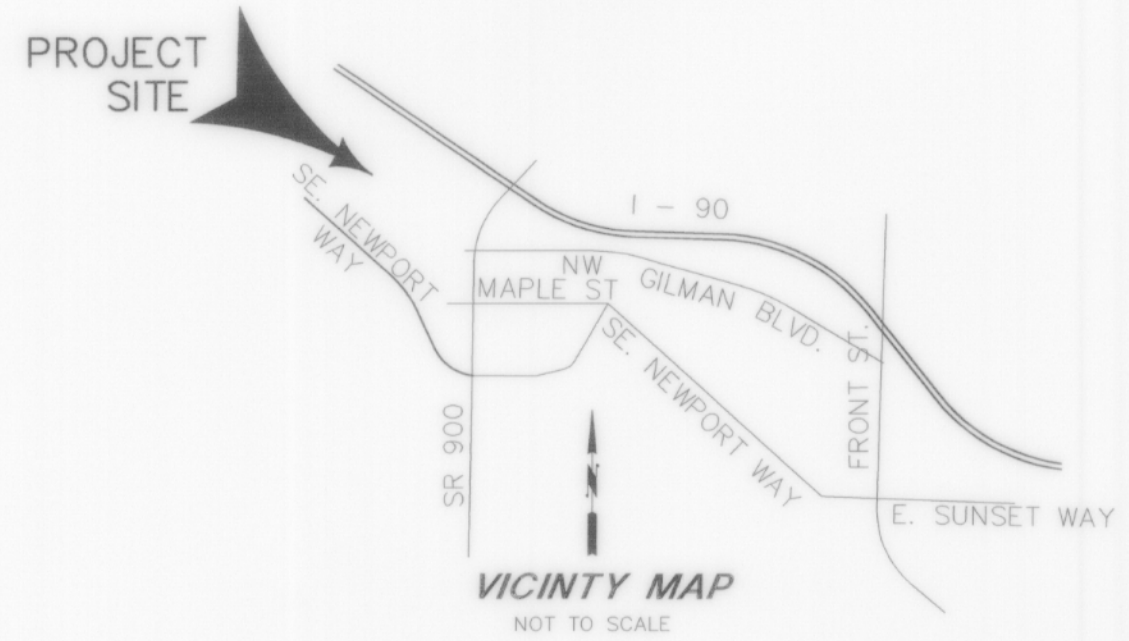
SE 1/4 SECTION 20, TWN. 24 N., R. 6 E., W.M. BREAKDOWN

EASEMENTS - (SHOWN ON PAGE 4 OF 4)

- RIGHTS OF THE CITY OF ISSAQUAH TO ANY PORTION OF SAID PREMISE LYING WITHIN A 44-FOOT RIGHT-OF-WAY AS CONDEMNED IN KING COUNTY SUPERIOR COURT CAUSE NO. 115812, AMENDED BY QUIT CLAIM DEEDS RECORDED UNDER RECORDING NO'S 7708190293 AND 7708300130.
- 20-FOOT METRO SANITARY SEWER EASEMENT NO. 6165049 SUPERCEDES AND CANCELS RECORDING NO.'S 6024711 AND 60252050.
- 15-FOOT METRO SANITARY SEWER EASEMENT RECORDING NO. 8104230613.
- 25-FOOT STORM DETENTION VAULT EASEMENT RECORDING NO. 9112120370.
- 60-FOOT STORM DRAINAGE EASEMENT RECORDING NO. 9112120371.
- 15-FOOT WATERLINE EASEMENT RECORDING NO. 9112120373.
- 15-FOOT WATER MAIN AND FIRE HYDRANT EASEMENT RECORDING NO. 9312152314.
- 10-FOOT U. S. WEST EASEMENT RECORDING NO. 19991115000331.
- SAMMAMISH CLUB INGRESS AND EGRESS EASEMENT RECORDING NO. 20020313002199.
- CITY OF ISSAQUAH ORDINANCE 2312 VACATING 18TH AND 19TH AVENUES NW AND A PORTION OF SE 63RD STREET (NW GILMAN BOULEVARD), RECORDED UNDER KING COUNTY RECORDING NO. 20020412003055 AND MODIFIED BY RECORDING NO. 20030819003426. THE CITY RETAINS THE RIGHT OF UTILITY EASEMENTS FOR EXISTING UTILITIES, AND FOR THE RIGHT TO GRANT EASEMENTS OVER VACATED RIGHT-OF-WAY FOR FUTURE UTILITIES.

EASEMENTS (NOT LOCATABLE)

- PUGET SOUND POWER AND LIGHT COMPANY ELECTRIC TRANSMISSION AND/OR DISTRIBUTION SYSTEM - AS CONSTRUCTED RECORDING NO. 7110290476.
- 25-FOOT INGRESS, EGRESS EASEMENT (OVER SOUTHERLY PORTION) ON SURVEY RECORDING NO. 7608129003.
- PACIFIC NORTHWEST BELL TELEPHONE COMPANY - AS CONSTRUCTED RECORDING NO. 7701180669.
- PUGET SOUND POWER AND LIGHT COMPANY ELECTRIC TRANSMISSION AND/OR DISTRIBUTION SYSTEM - AS CONSTRUCTED RECORDING NO. 8303140377.



BASIS OF BEARINGS:
SOUTH LINE OF SECTION 20-24-6
SOUTHEAST CORNER TO SOUTH 1/4
CORNER N89°59'55"E.
PER SURVEY RECORDED IN BOOK
77 OF SURVEYS, PAGE 272.

LEGEND

- FOUND REBAR
- SET 1/2" REBAR & CAP #28101
- ⊙ MONUMENT FOUND
- ⊕ CONTROL MONUMENT
- (M) MEASURED
- (D) DEED
- (P) PLAT
- ⊗ FOUND 1/4 CORNER
- ⊕ FOUND SECTION CORNER

- INSTRUMENTATION FOR THIS SURVEY WAS A 5 SEC. THEODOLITE AND ELECTRONIC DISTANCE MEASURING UNIT. PROCEDURES USED IN THIS SURVEY WERE FIELD TRAVERSE, MEETING OR EXCEEDING STANDARDS SET BY WAC 332-130-090.
- THE INFORMATION DEPICTED ON THIS MAP REPRESENTS THE RESULTS OF A SURVEY MADE NOVEMBER, 1998, AND SHOWS THE GENERAL CONDITION EXISTING AT THAT TIME.
- SURVEY REFERENCE:
BOOK 7, PAGE 18
BOOK 77, PAGE 272
PLAT OF ROWLEY INDUSTRIAL PARK
VOL 130 OF PLATS, PAGES 4-7
- CITY OF ISSAQUAH LOT LINE ADJUSTMENT NUMBER 90.13, RECORDING NO. 9106030554

AMENDMENT NO. 1 ADJUSTS THE BOUNDARIES BETWEEN LOTS 12 & 13 OF THE ORIGINAL Hyla, A BINDING SITE PLAN AS RECORDED UNDER RECORDING NUMBER 20040907001367 RECORDS OF KING COUNTY, WASHINGTON.

CONCEPT ENGINEERING, INC.
455 Rainier Boulevard North, Suite 200
Issaquah, Washington 98027
(206) 392-8055 FAX (206) 392-0108

