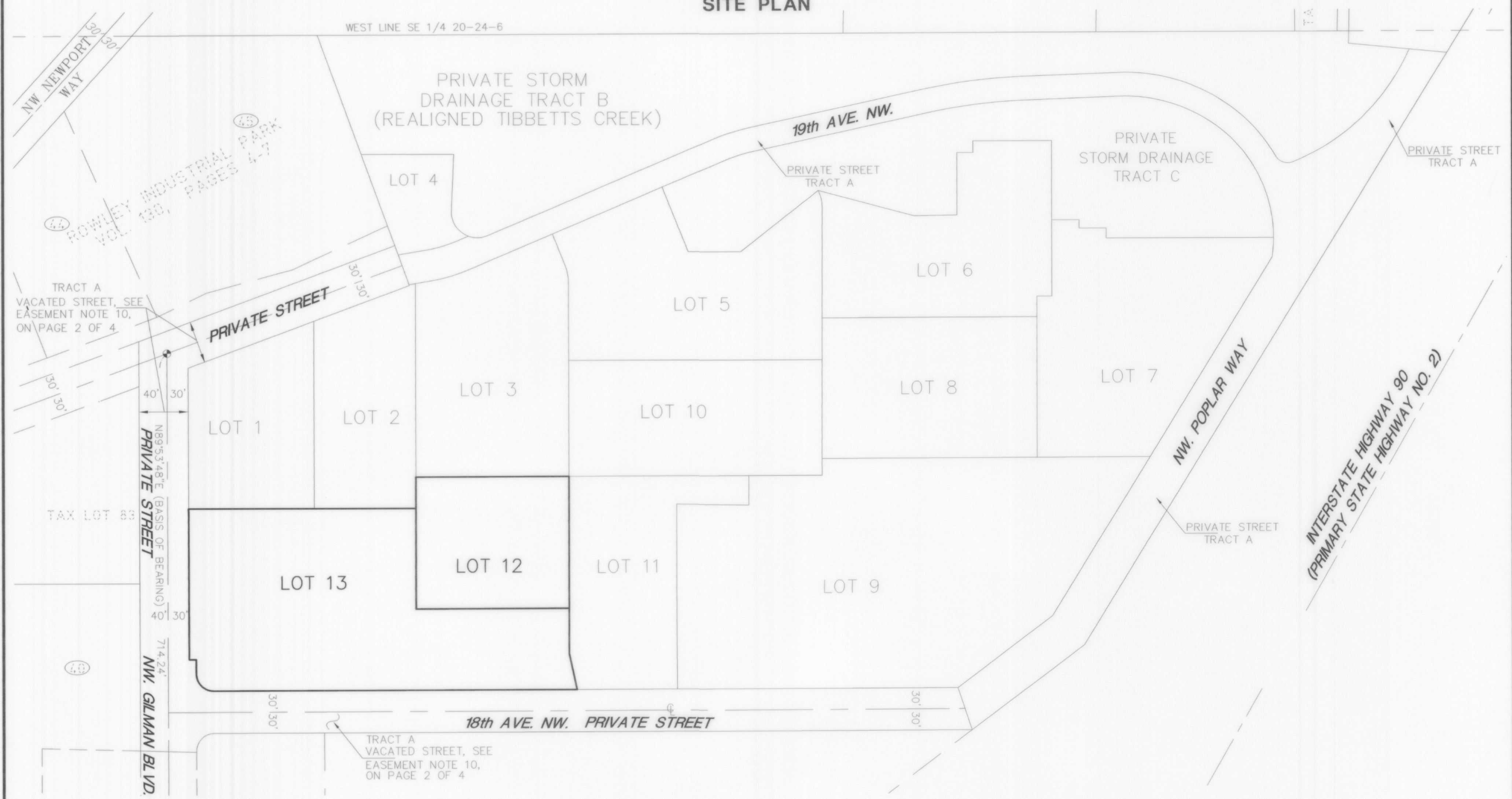


HYLA, A BINDING SITE PLAN AMENDMENT NO. 1

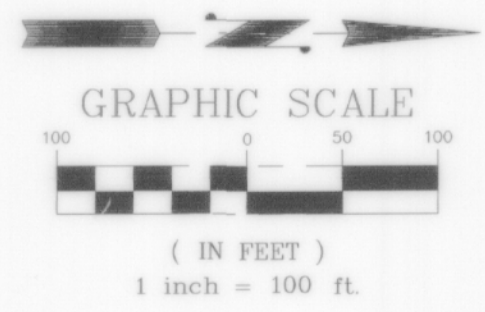
PORTION OF SE 1/4, SECTION 20, T. 24 N., R. 6 E., W.M.
CITY OF ISSAQUAH, KING COUNTY, WASHINGTON.
BSP 97-01 (PLN04-00099)
SITE PLAN



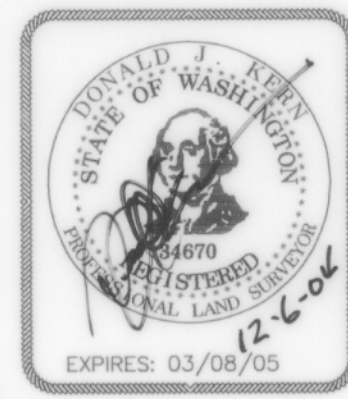
TRACT A
VACATED STREET, SEE
EASEMENT NOTE 10,
ON PAGE 2 OF 4.

PRIVATE STREET
N89°53'48"E (BASIS OF BEARING)
714.24'
NW. GILMAN BLVD.

TRACT A
VACATED STREET, SEE
EASEMENT NOTE 10,
ON PAGE 2 OF 4.



AMENDMENT NO. 1 ADJUSTS THE BOUNDARIES BETWEEN LOTS 12 & 13 OF THE ORIGINAL Hyla, A BINDING SITE PLAN AS RECORDED UNDER RECORDING NUMBER 20040907001367 RECORDS OF KING COUNTY, WASHINGTON.



CONCEPT ENGINEERING, INC.
455 Rainier Boulevard North, Suite 200
Issaquah, Washington 98027
(206) 392-8055 FAX (206) 392-0108

DATE: 12-6-2004 JOB NO. 22065