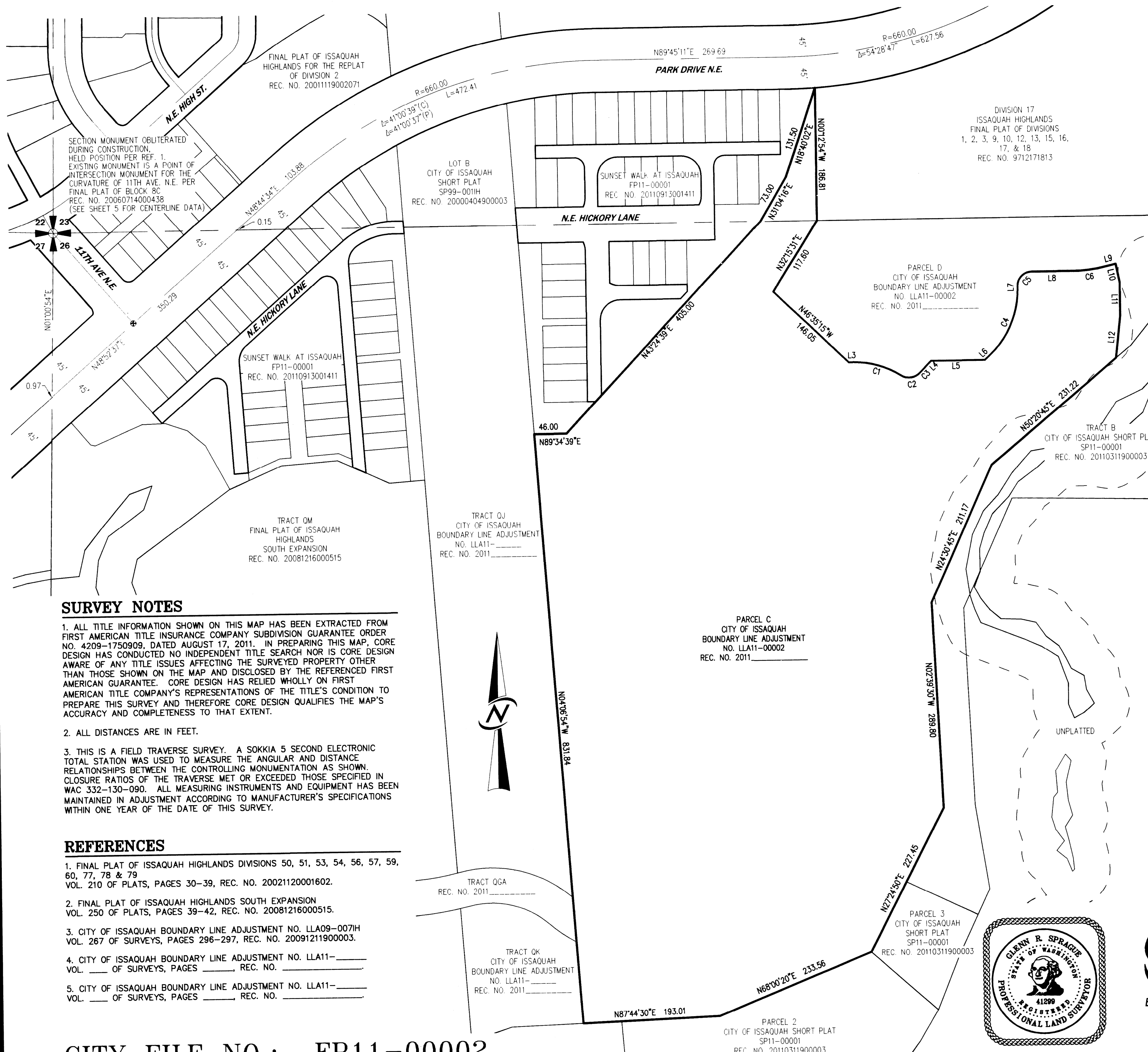


Forest Ridge at Issaquah Highlands (PARCEL C)

SW 1/4, SW 1/4 SECTION 23 AND NW 1/4 & NE 1/4, NW 1/4 SECTION 26, TOWNSHIP 24 NORTH, RANGE 6 EAST, W.M.
CITY OF ISSAQUAH, KING COUNTY, WASHINGTON

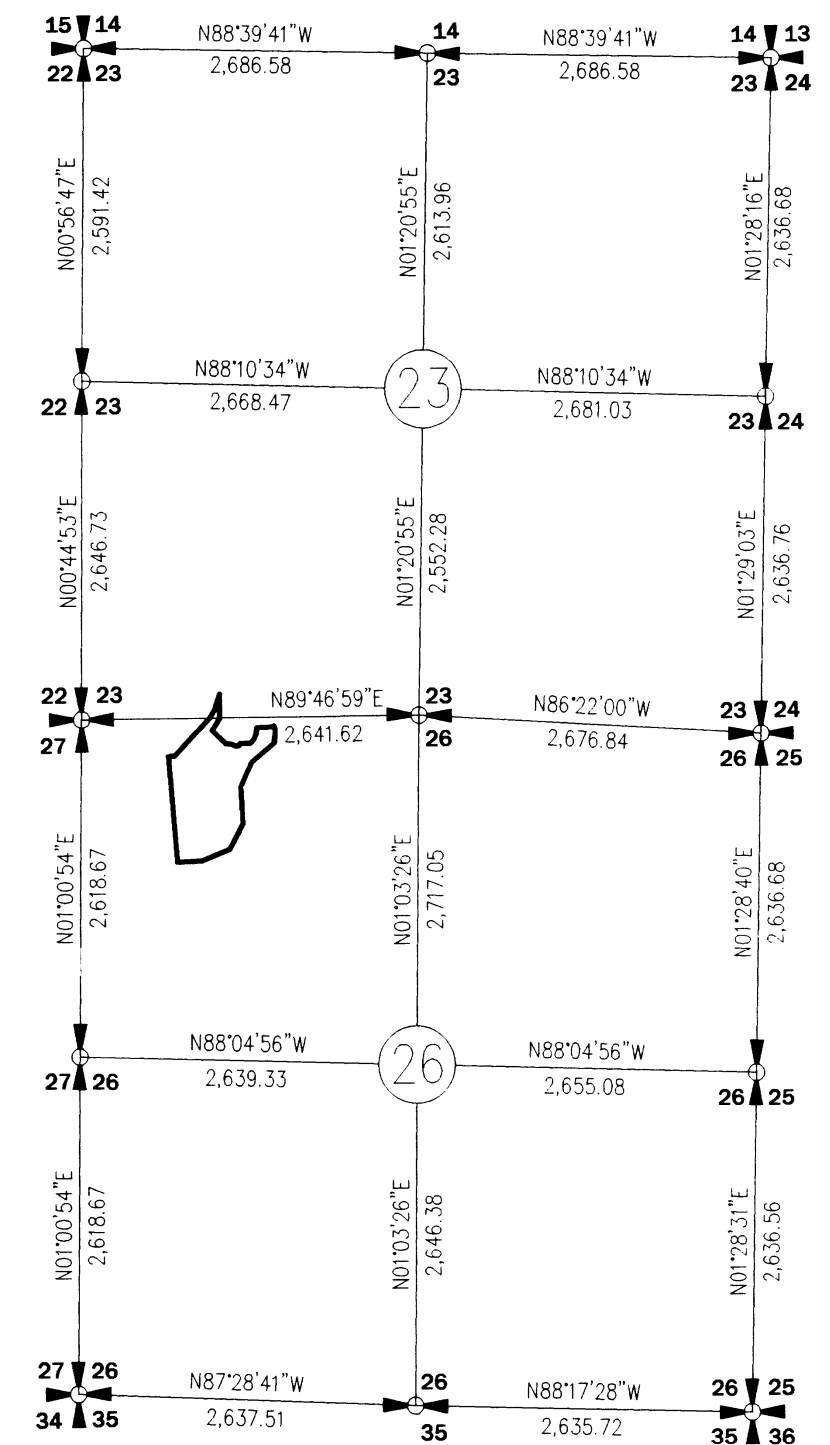


SURVEY NOTES

- ALL TITLE INFORMATION SHOWN ON THIS MAP HAS BEEN EXTRACTED FROM FIRST AMERICAN TITLE INSURANCE COMPANY SUBDIVISION GUARANTEE ORDER NO. 4209-1750909, DATED AUGUST 17, 2011. IN PREPARING THIS MAP, CORE DESIGN HAS CONDUCTED NO INDEPENDENT TITLE SEARCH NOR IS CORE DESIGN AWARE OF ANY TITLE ISSUES AFFECTING THE SURVEYED PROPERTY OTHER THAN THOSE SHOWN ON THE MAP AND DISCLOSED BY THE REFERENCED FIRST AMERICAN GUARANTEE. CORE DESIGN HAS RELIED WHOLLY ON FIRST AMERICAN TITLE COMPANY'S REPRESENTATIONS OF THE TITLE'S CONDITION TO PREPARE THIS SURVEY AND THEREFORE CORE DESIGN QUALIFIES THE MAP'S ACCURACY AND COMPLETENESS TO THAT EXTENT.
- ALL DISTANCES ARE IN FEET.
- THIS IS A FIELD TRAVERSE SURVEY. A SOKKIA 5 SECOND ELECTRONIC TOTAL STATION WAS USED TO MEASURE THE ANGULAR AND DISTANCE RELATIONSHIPS BETWEEN THE CONTROLLING MONUMENTATION AS SHOWN. CLOSURE RATIOS OF THE TRAVERSE MET OR EXCEEDED THOSE SPECIFIED IN WAC 332-130-090. ALL MEASURING INSTRUMENTS AND EQUIPMENT HAS BEEN MAINTAINED IN ADJUSTMENT ACCORDING TO MANUFACTURER'S SPECIFICATIONS WITHIN ONE YEAR OF THE DATE OF THIS SURVEY.

REFERENCES

- FINAL PLAT OF ISSAQUAH HIGHLANDS DIVISIONS 50, 51, 53, 54, 56, 57, 59, 60, 77, 78 & 79 VOL. 210 OF PLATS, PAGES 30-39, REC. NO. 20021120001602.
- FINAL PLAT OF ISSAQUAH HIGHLANDS SOUTH EXPANSION VOL. 250 OF PLATS, PAGES 39-42, REC. NO. 20081216000515.
- CITY OF ISSAQUAH BOUNDARY LINE ADJUSTMENT NO. LLA09-0071H VOL. 267 OF SURVEYS, PAGES 296-297, REC. NO. 20091211900003.
- CITY OF ISSAQUAH BOUNDARY LINE ADJUSTMENT NO. LLA11-00002 VOL. 267 OF SURVEYS, PAGES 296-297, REC. NO. 20091211900003.
- CITY OF ISSAQUAH BOUNDARY LINE ADJUSTMENT NO. LLA11-00002 VOL. 267 OF SURVEYS, PAGES 296-297, REC. NO. 20091211900003.



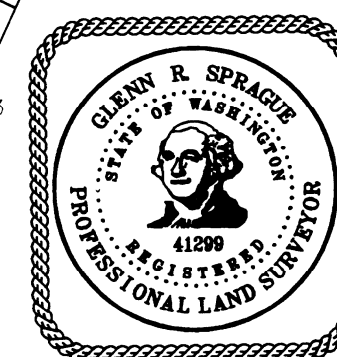
SECTION SUBDIVISION AS SHOWN PER REF. 1

BASIS OF BEARINGS

N89°46'59\"/>

LINE	BEARING	DIST
L3	N89°46'59"E	6.82
L4	N45°51'35"E	6.31
L5	N89°46'59"E	76.40
L6	N45°51'35"E	12.60
L7	N00°00'00"E	3.68
L8	N89°46'46"E	58.35
L9	N76°26'43"E	16.93
L10	N11°53'08"W	26.74
L11	N00°09'42"W	46.89
L12	N06°30'27"E	59.43

CURVE	RADIUS	DELTA ANGLE	ARC LENGTH
C1	121.50	32°38'37"	69.22
C2	22.00	79°49'52"	30.65
C3	276.50	03°15'50"	15.75
C4	126.50	45°51'35"	101.25
C5	20.00	89°46'48"	31.34
C6	193.00	13°20'05"	44.92



CORE
DESIGN

ENGINEERING · PLANNING · SURVEYING

JOB NO. 10090

SHEET 2 OF 7

14711 N.E. 29th Pl. Suite 101
Bellevue, Washington 98007
425.885.7877 Fax 425.885.7963

CITY FILE NO.: FP11-00002