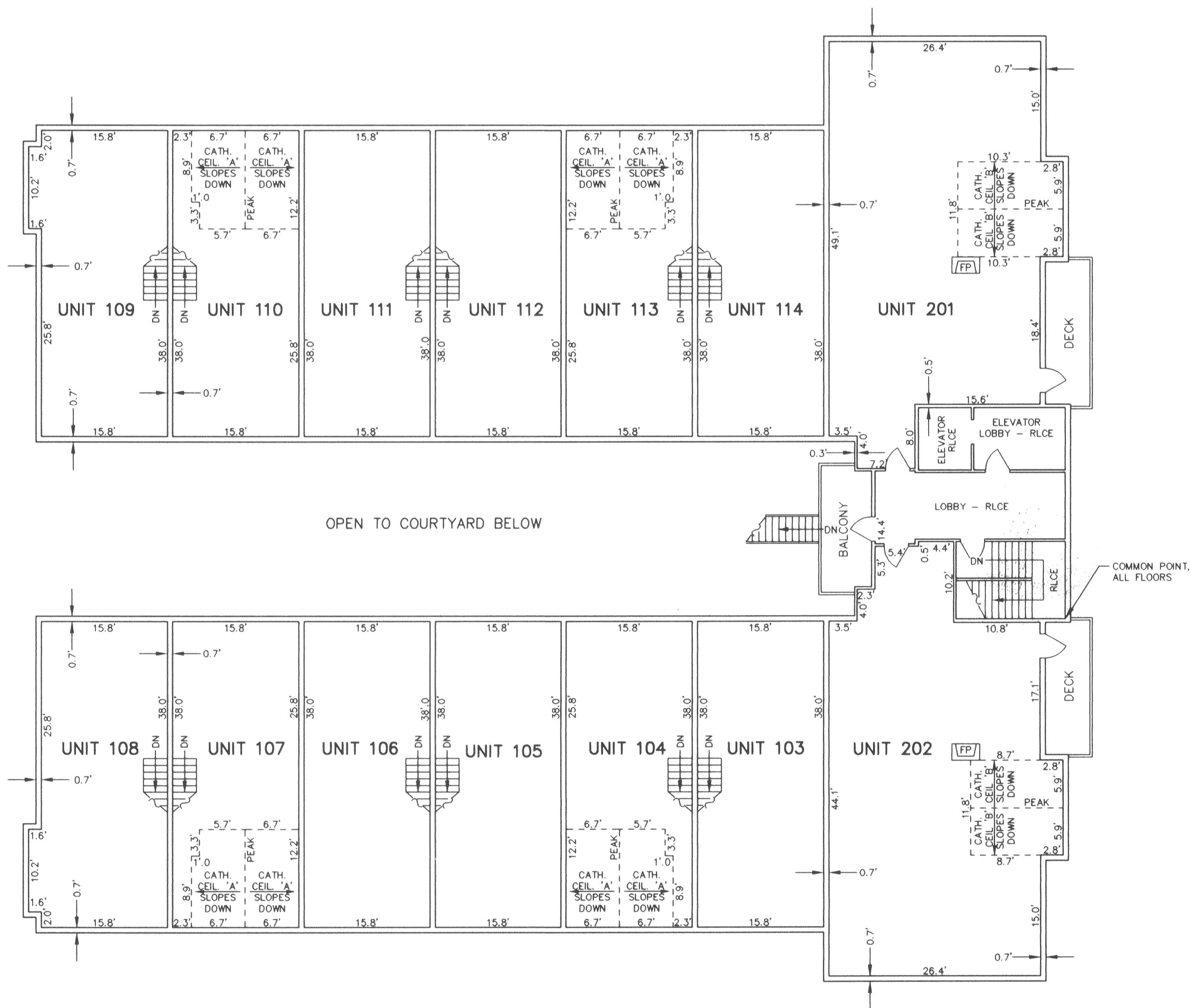


ISSAQUAH COURT A CONDOMINIUM

SECTION 28, TOWNSHIP 24 NORTH, RANGE 6 EAST, W.M.
CITY OF ISSAQUAH COUNTY OF KING STATE OF WASHINGTON



THIRD FLOOR PLAN - RESIDENTIAL UNITS

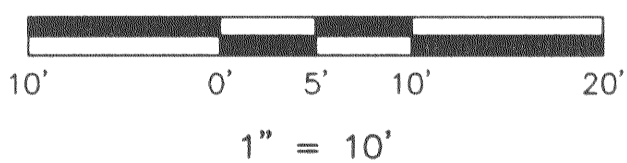
THIRD FLOOR ELEVATION TABLE

FLOOR ELEV.	114.0
CEILING ELEV.	122.1
CATH. CEIL. 'A' UPPER ELEV.	126.8
LOWER ELEV.	122.1
CATH. CEIL. 'B' UPPER ELEV.	126.1
LOWER ELEV.	121.6

LEGEND

F.P.	FIRE PLACE
R.L.C.E.	RESIDENTIAL LIMITED COMMON ELEMENT

GRAPHIC SCALE IN FEET



TIM HANSON AND ASSOCIATES, INC.

6025 - 108th AVENUE N.E. KIRKLAND, WA 98033
(425) 822-7271

6769