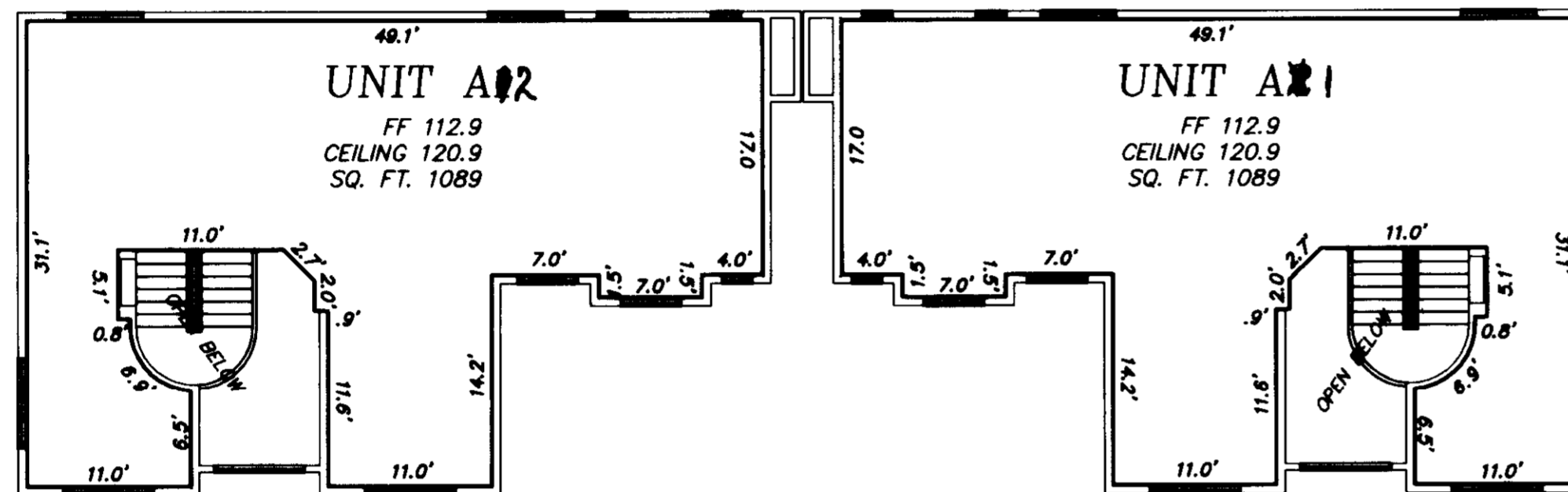
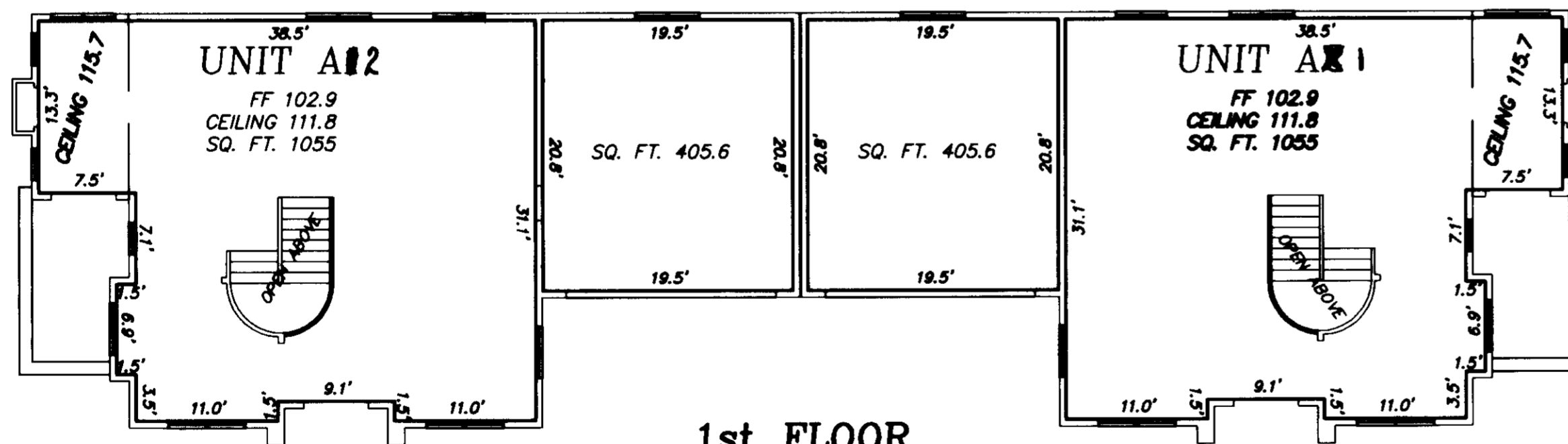


# ISSAQUAH CREEK MEADOWS A CONDOMINIUM

NW 1/4, NW 1/4, of SEC. 34, TWP. 24N., RGE. 6 E., W.M.  
CITY OF ISSAQUAH, COUNTY OF KING, STATE OF WASHINGTON



2nd FLOOR  
BUILDING A



1st FLOOR  
BUILDING A

### GENERAL NOTES

1. FLOOR AREA IS STATED AT ±0.1 SQUARE FEET
2. ALL BUILDING MEASUREMENTS ARE TO THE INTERIOR SURFACE OF THE EXISTING SHEETROCK AND ARE SHOWN TO WITHIN 0.10 ± FEET.
3. STAIRWAYS WERE NOT COUNTED AS SQUARE FOOTAGE ON THE SECOND FLOOR.



<b>ISSAQUAH CREEK MEADOWS A CONDOMINIUM</b>						<b>BUILDERS Consulting and Surveying</b> 43108 SE. 134th Ct. North Bend WA 98045 425-831-7555		
DWN. BY WJS		DATE 2/16/05		JOB NO. 040303				
CHKD. BY		SCALE: 1"=10'		SHEET 3 OF 4				
1/4	NW 1/4	NW 1/4	SEC 34	TWP 24N	RGE 6E			