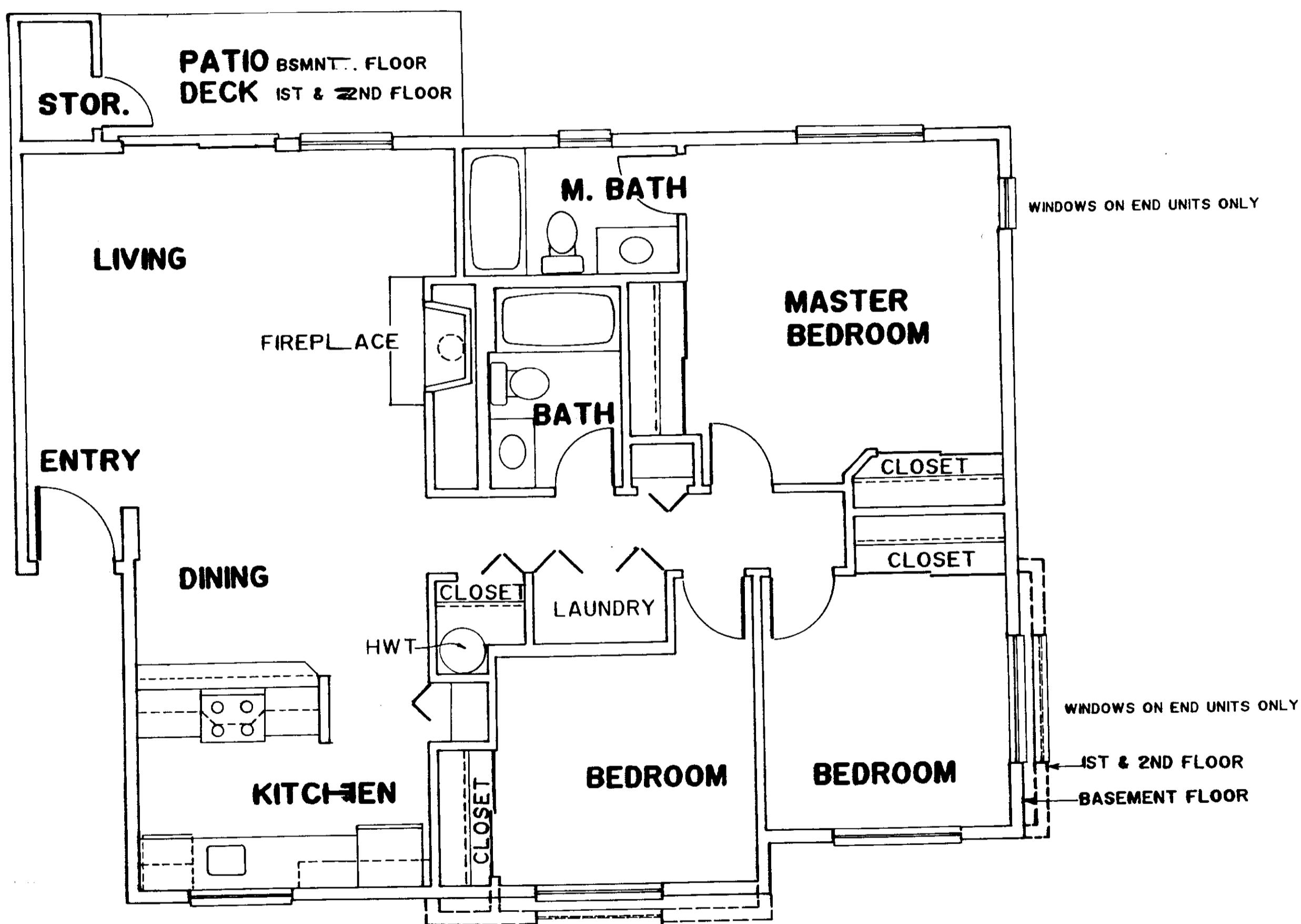


SURVEY MAP AND BUILDING PLANS
FOR
ISSAQUAH CROWN CONDOMINIUMS

NW 1/4, SEC. 34, TWP. 24 N., RGE. 6 E., W.M.
KING COUNTY, WASHINGTON

97/19
COND.



UNIT TYPE D
3 BEDROOM, 2 BATH
1098 SF
1121 SF

97/19
COND.