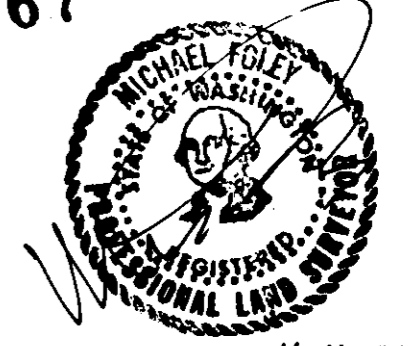


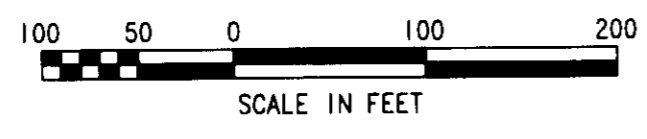
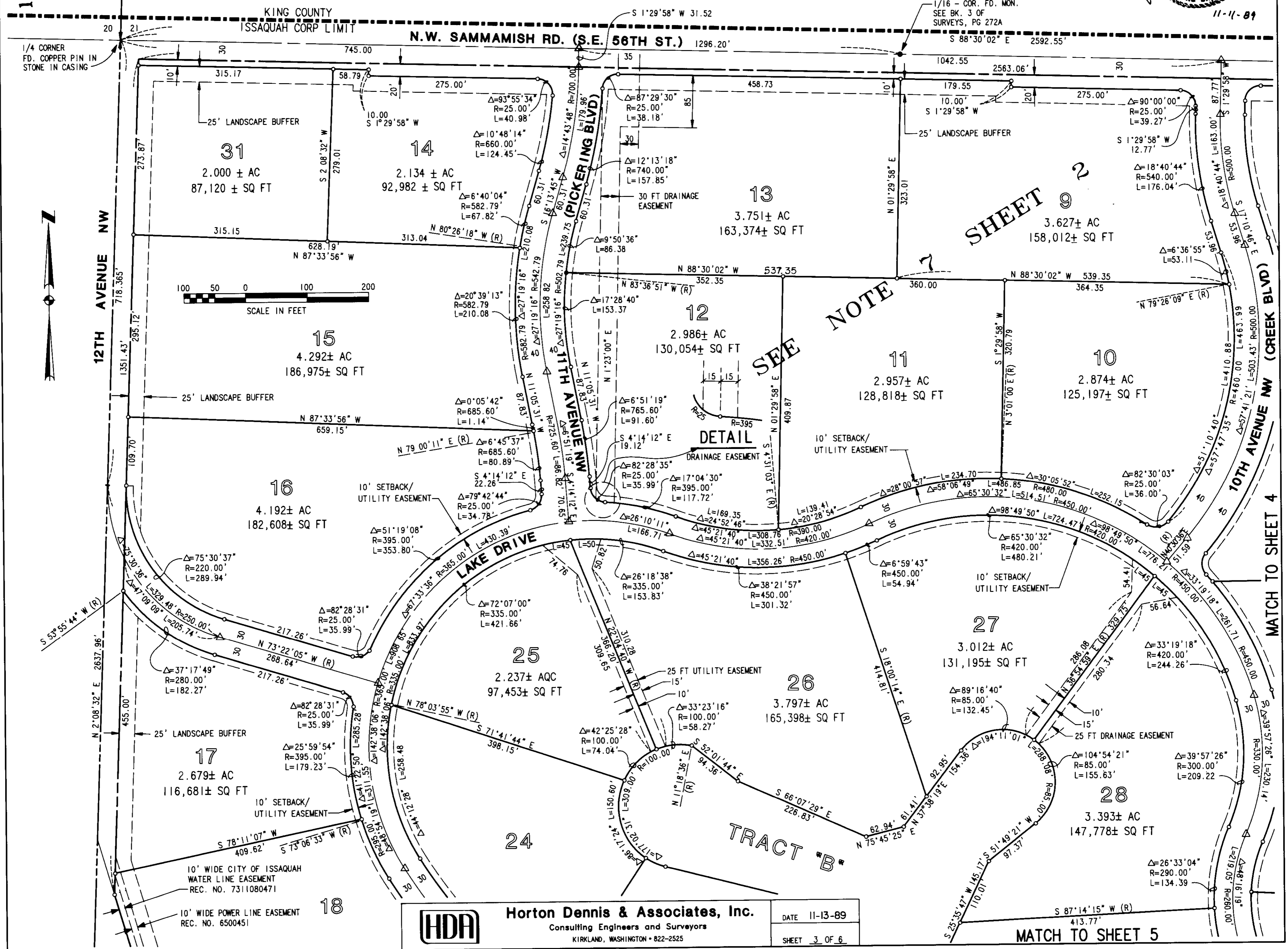
149/67



I-90 CORPORATE CENTER

SW 1/4 & SW 1/4 SE 1/4 SECTION 21, TOWNSHIP 24 N, RANGE 6 E, W.M.
CITY OF ISSAQUAH, KING COUNTY, WASHINGTON

149/67



SEE NOTE 7

DETAIL

TRACT "B"



Horton Dennis & Associates, Inc.
Consulting Engineers and Surveyors
KIRKLAND, WASHINGTON • 822-2525

DATE 11-13-89
SHEET 3 OF 6

MATCH TO SHEET 5

MATCH TO SHEET 4

SHEET 9