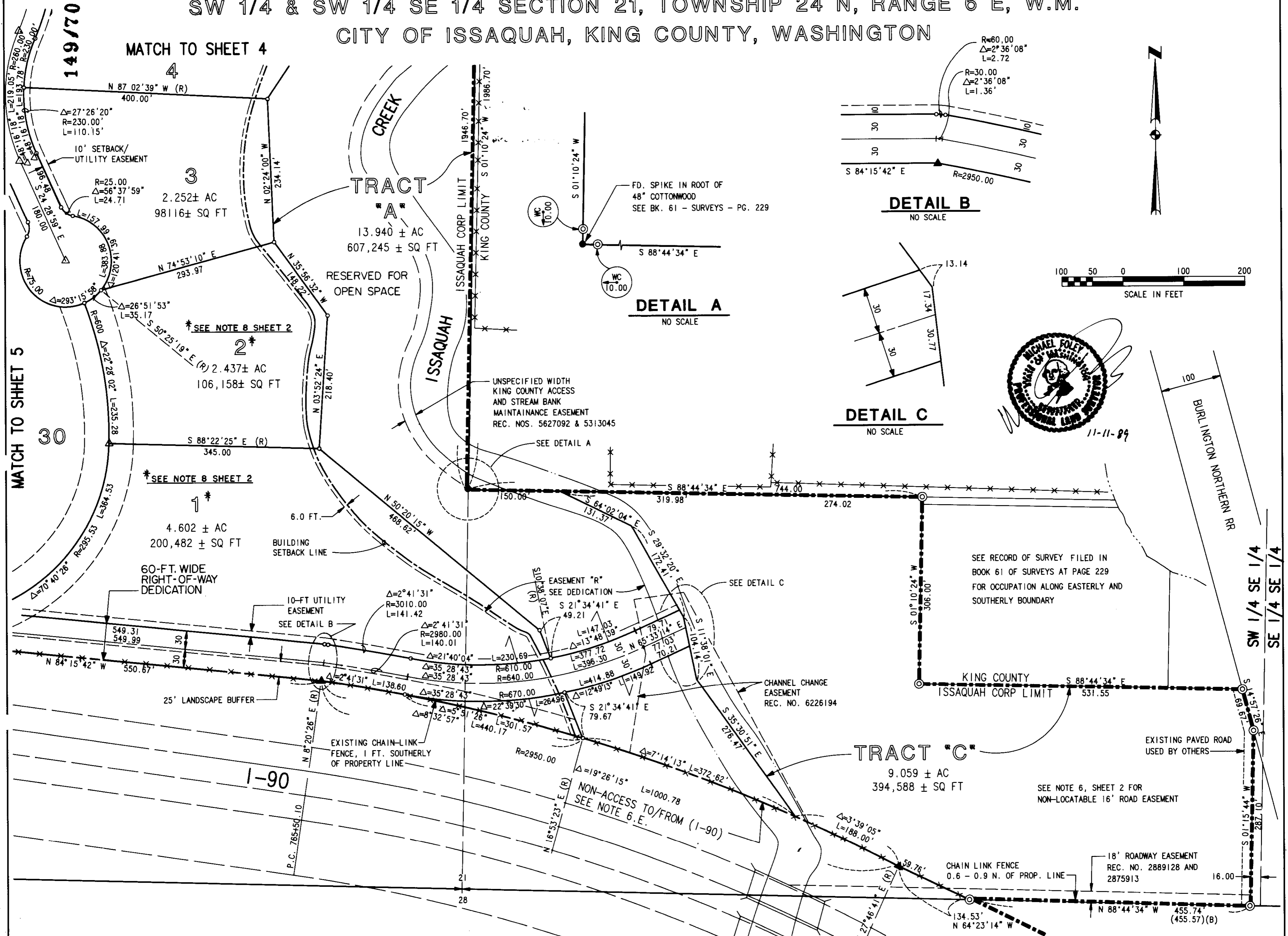


I-90 CORPORATE CENTER

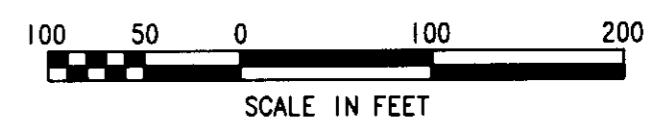
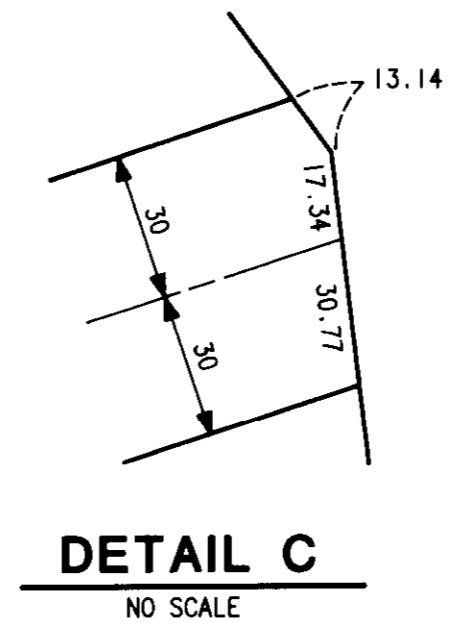
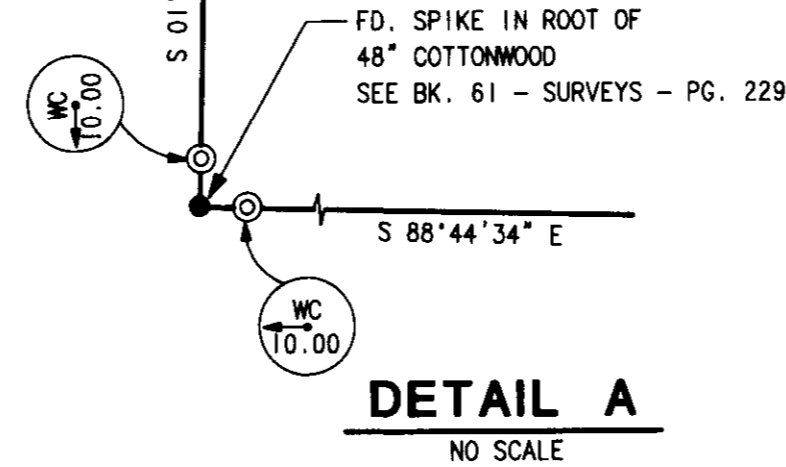
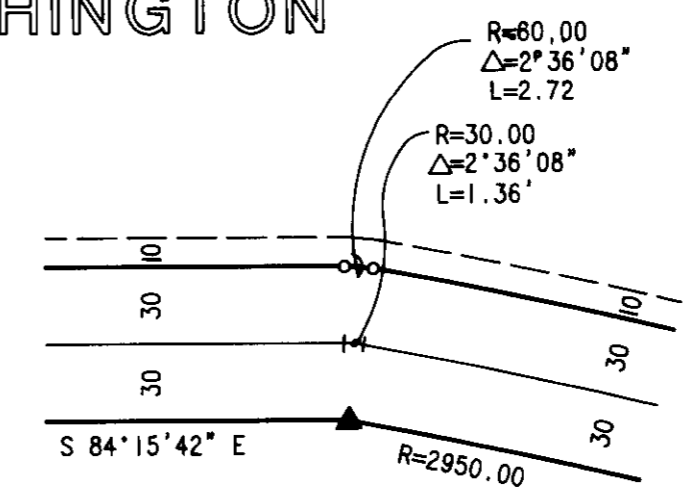
SW 1/4 & SW 1/4 SE 1/4 SECTION 21, TOWNSHIP 24 N, RANGE 6 E, W.M.
CITY OF ISSAQUAH, KING COUNTY, WASHINGTON

149/70



MATCH TO SHEET 5

MATCH TO SHEET 4



SEE RECORD OF SURVEY FILED IN BOOK 61 OF SURVEYS AT PAGE 229 FOR OCCUPATION ALONG EASTERLY AND SOUTHERLY BOUNDARY

SEE NOTE 6, SHEET 2 FOR NON-LOCATABLE 16' ROAD EASEMENT