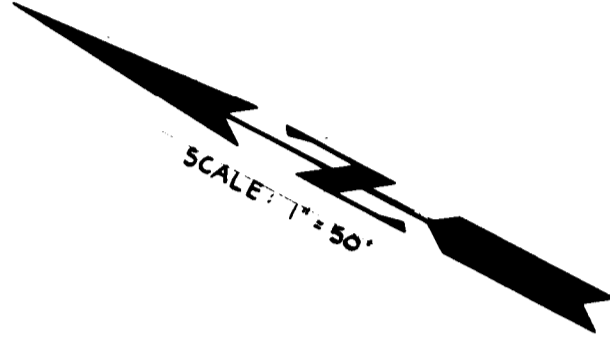


ISSAQUAH CREEK VISTA
 A PLANNED UNIT DEVELOPMENT
 IN THE NW 1/4 OF THE NE 1/4 OF SEC. 28, T 24 N, R 6 E WM.
 CITY OF ISSAQUAH
 KING COUNTY, WASHINGTON

4/30
 P.U.D.

4/30
 P.U.D.

#0196
 87/10/16
 RECD F 25.00
 REV S 26.00
 CRSHSL
 ***51.00
 11



S.R. 90

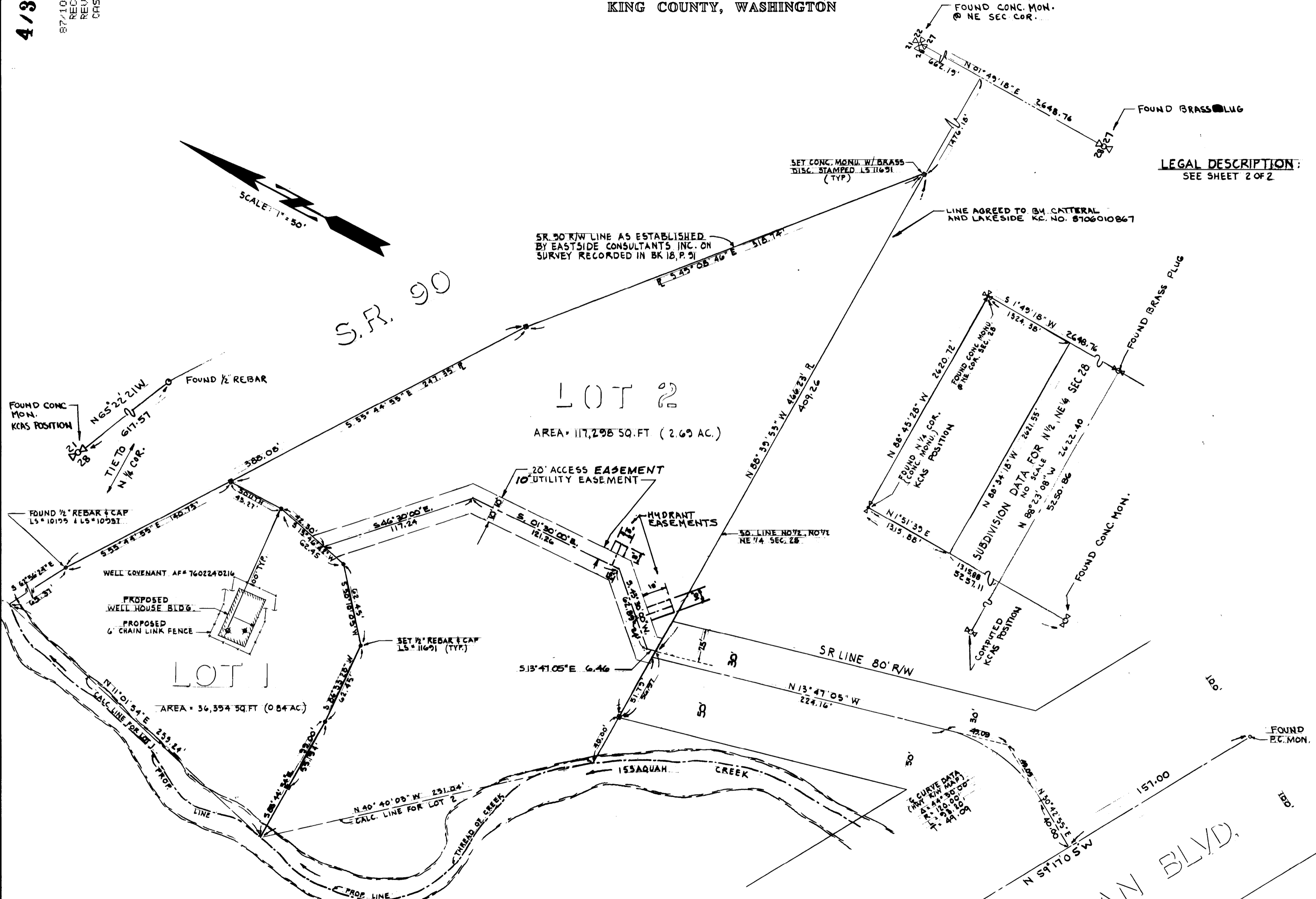
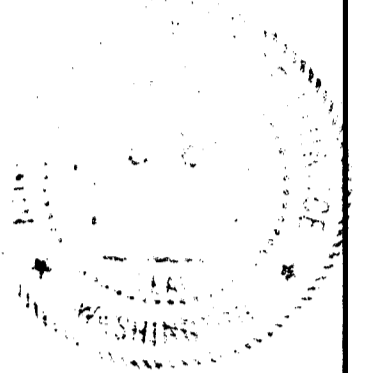
LOT 2

AREA = 117,298 SQ. FT. (2.69 AC.)

LOT 1

AREA = 36,354 SQ. FT. (0.84 AC.)

LEGAL DESCRIPTION:
 SEE SHEET 2 OF 2



MERIDIAN: WASHINGTON STATE
 COORDINATE SYSTEM NORTH ZONE
 AS ESTABLISHED BY K.C.A.S.
 BASED ON BEARING ON SOUTH LINE
 OF SW 1/4, SEC. 27, T24 N, R6E.



N.W. GILMAN BLVD.
 (P.S.H. NO. 2)