

# ISSAQUAH CREEK VISTA

A PLANNED UNIT DEVELOPMENT

IN THE NW 1/4 OF THE NE 1/4 OF SEC. 28, T 24 N, R 6 E WM.

CITY OF ISSAQUAH

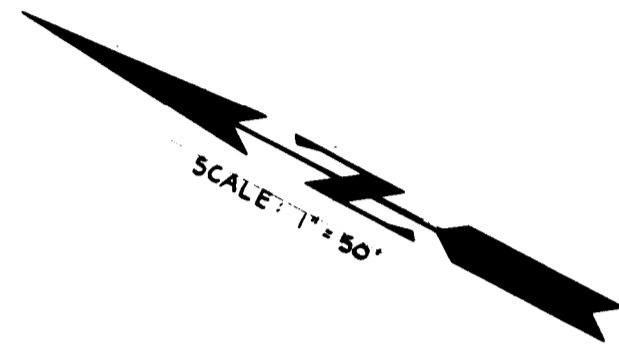
KING COUNTY, WASHINGTON

4/30

P.U.D.

4/30 P.U.D.

#0196  
87/10/16  
RECD F 25.00  
REV S 26.00  
CRSHSL  
\*\*\*51.00  
11



SCALE: 1" = 50'

S.R. 90

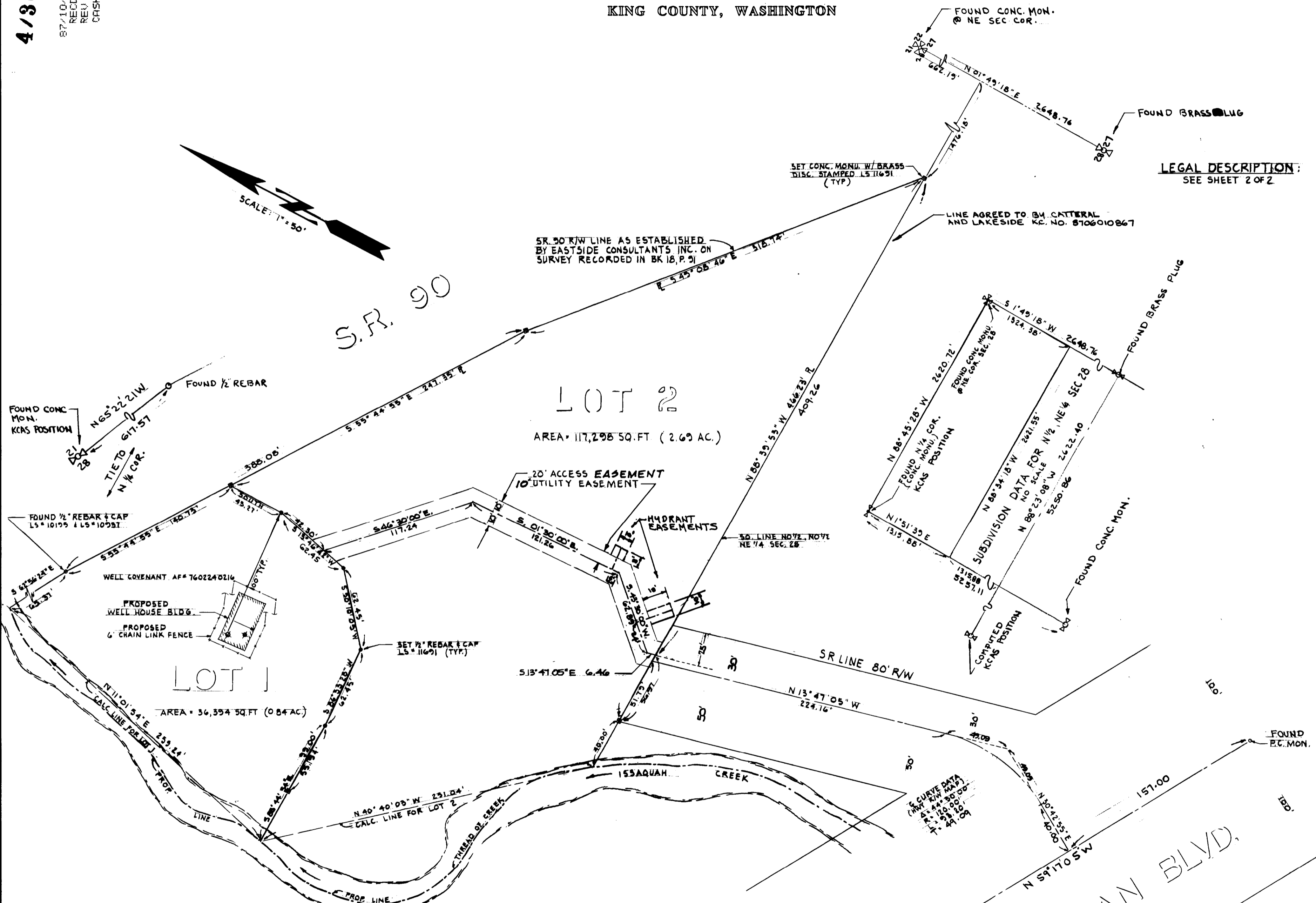
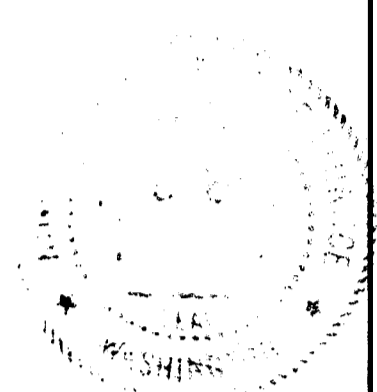
LOT 2

AREA = 117,298 SQ. FT. (2.69 AC.)

LOT 1

AREA = 36,354 SQ. FT. (0.84 AC.)

LEGAL DESCRIPTION:  
SEE SHEET 2 OF 2



MERIDIAN: WASHINGTON STATE  
COORDINATE SYSTEM NORTH ZONE  
AS ESTABLISHED BY K.C.A.S.  
BASED ON BEARING ON SOUTH LINE  
OF SW 1/4, SEC. 27, T24 N, R6E.



