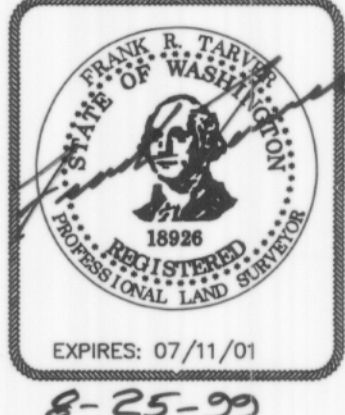
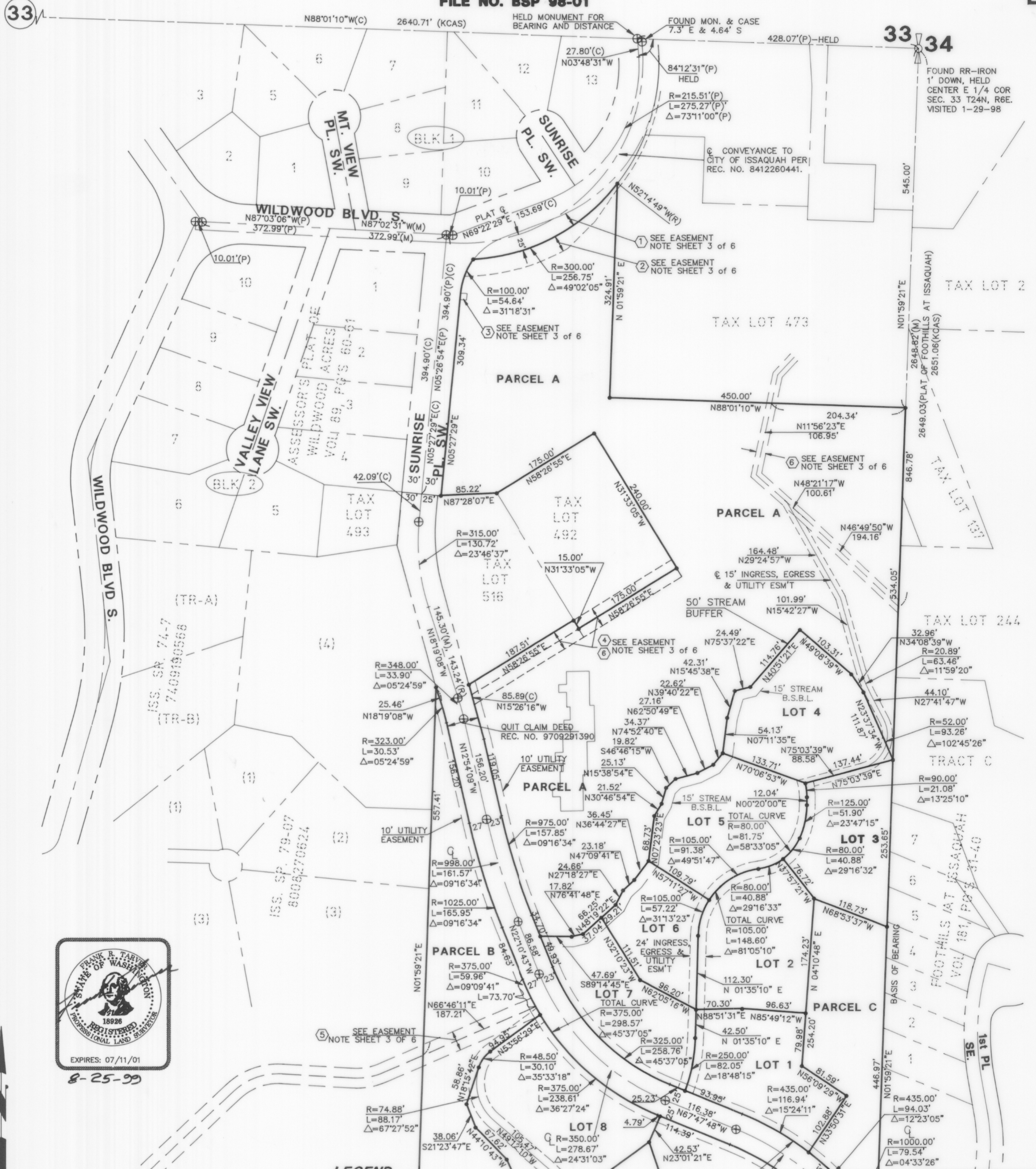


KELKARI, A BINDING SITE PLAN

PORTION OF E. 1/2, SE. 1/4, SECTION 33, T. 24 N., R. 6 E., W.M. CITY OF ISSAQUAH, KING COUNTY, WASHINGTON.

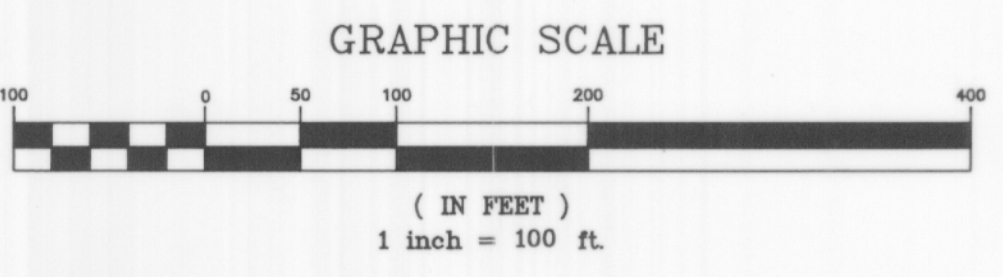
VOL. PAGE

FILE NO. BSP 98-01



8-25-99

- LEGEND**
- FOUND REBAR
 - SET 1/2" REBAR & CAP #28101
 - ⊙ MONUMENT FOUND IN CASE
 - (M) - MEASURED
 - (D) - DEED
 - (P) - PLAT
 - (C) - CALCULATED
 - (KCAS) - KING COUNTY AERIAL SURVEY



CONCEPT ENGINEERING, INC.
 455 Reiner Boulevard North, Suite 200
 Issaquah, Washington 98027
 (206) 392-8055 FAX (206) 392-0108

DATE: 8-23-99 JOB NO. 98071BSP1

VOL. PAGE
19119