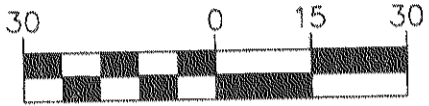


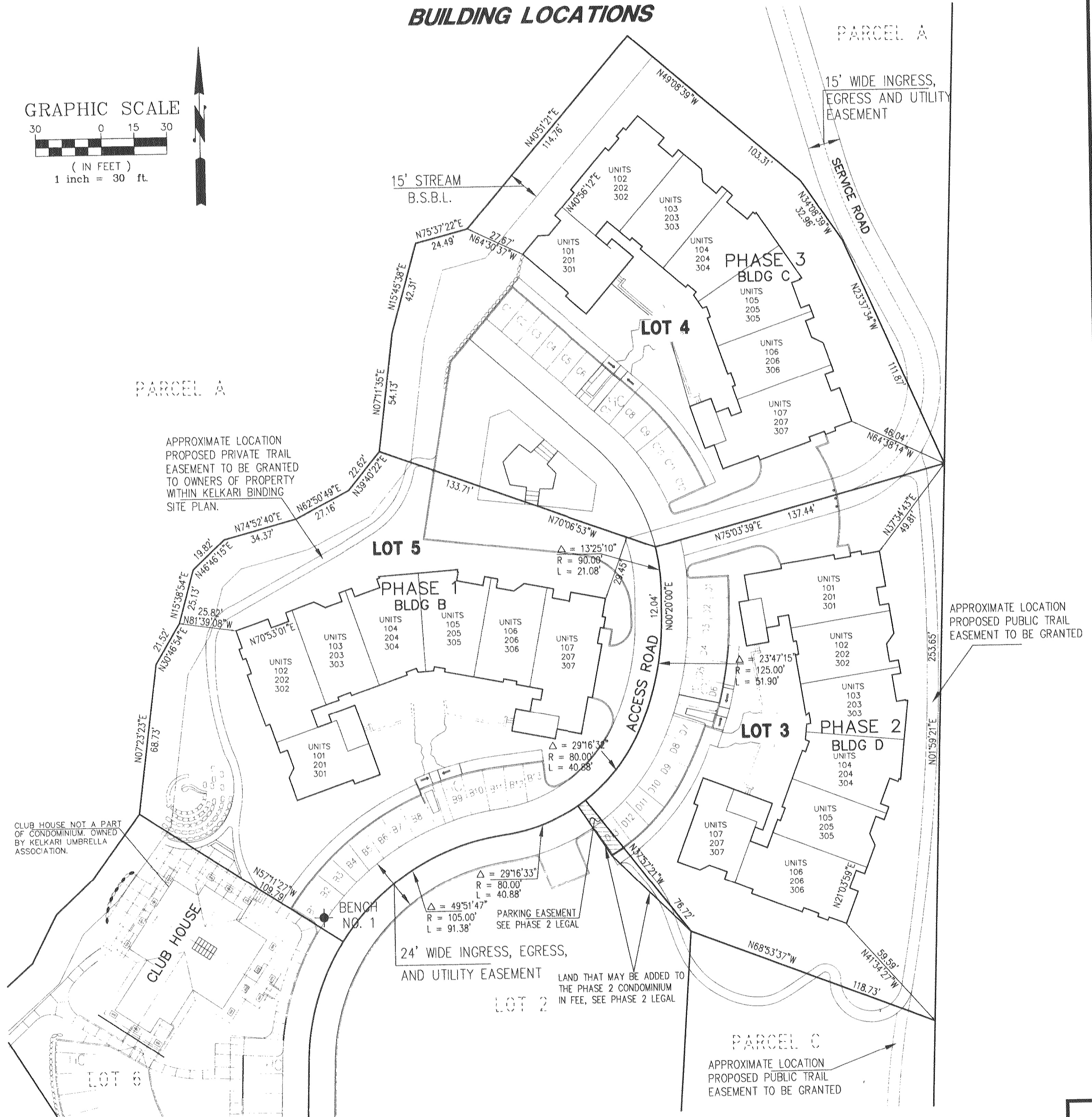
KELKARI A CONDOMINIUM, PHASES 1, 2, & 3 SITUATE IN THE E 1/2, OF SE 1/4, SEC. 33, T. 24 N., R. 6 E., W.M., CITY OF ISSAQUAH, KING COUNTY, WASHINGTON

BUILDING LOCATIONS

GRAPHIC SCALE



(IN FEET)
1 inch = 30 ft.



PARCEL A

APPROXIMATE LOCATION
PROPOSED PRIVATE TRAIL
EASEMENT TO BE GRANTED
TO OWNERS OF PROPERTY
WITHIN KELKARI BINDING
SITE PLAN.

PARCEL A

15' WIDE INGRESS,
EGRESS AND UTILITY
EASEMENT

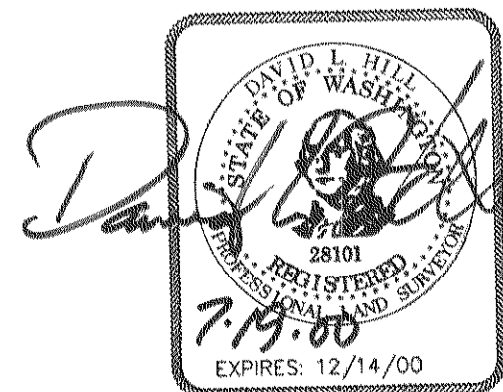
APPROXIMATE LOCATION
PROPOSED PUBLIC TRAIL
EASEMENT TO BE GRANTED

CLUB HOUSE NOT A PART
OF CONDOMINIUM. OWNED
BY KELKARI UMBRELLA
ASSOCIATION.

$\Delta = 29^{\circ}16'33''$
 $R = 80.00'$
 $L = 40.88'$
 $\Delta = 49^{\circ}51'47''$
 $R = 105.00'$
 $L = 91.38'$
PARKING EASEMENT
SEE PHASE 2 LEGAL

24' WIDE INGRESS, EGRESS,
AND UTILITY EASEMENT
LAND THAT MAY BE ADDED TO
THE PHASE 2 CONDOMINIUM
IN FEE, SEE PHASE 2 LEGAL

PARCEL C
APPROXIMATE LOCATION
PROPOSED PUBLIC TRAIL
EASEMENT TO BE GRANTED



CONCEPT ENGINEERING, INC.
455 RAINIER BOULEVARD NORTH, SUITE 200
ISSAQUAH, WASHINGTON 98027
(425) 382-9055 FAX (425) 382-0108

DATE: 7-17-2000 JOB NO. 99546PC