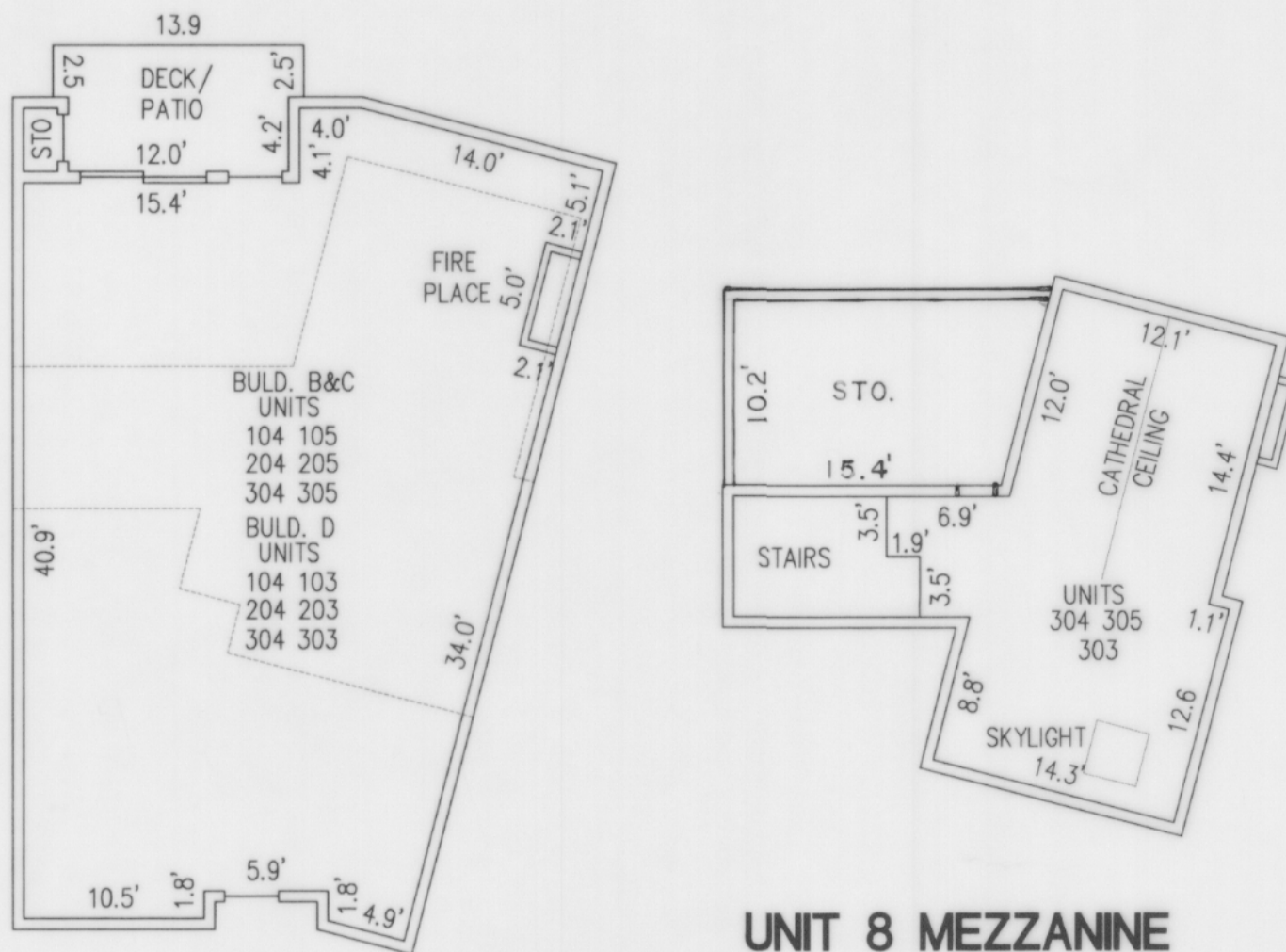


# KELKARI

## A CONDOMINIUM, PHASES 1, 2, & 3

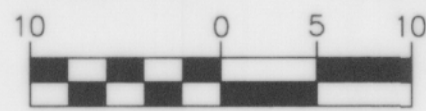
SITUATE IN THE E 1/2, OF SE 1/4, SEC. 33, T. 24 N., R. 6 E., W.M.,  
CITY OF ISSAQUAH, KING COUNTY, WASHINGTON

### UNIT DIMENSIONS



UNIT 7 & 8 FLOOR PLAN

#### GRAPHIC SCALE



( IN FEET )  
1 inch = 10 ft.

#### UNIT DATA

BLDG.	UNIT #	LIVING SQ.FT.	STORAGE SQ. FT.	DECK/PATIO SQ.FT.	FLOOR ELEV.	CEILING ELEV.	MEZZANINE FLOOR ELEV.	MEZZANINE CEILING ELEV	MEZZANINE CATHEDRAL PEAK ELEV.
B	104	1109	8.9	85	194.25	203.25	—	—	—
B	204	1109	8.9	85	204.50	213.50	—	—	—
B	304	1489	181	85	214.90	223.90	225.23	234.43	238.46
B	105 R	1109	8.9	85	194.25	203.25	—	—	—
B	205 R	1109	8.9	85	204.50	213.50	—	—	—
B	305 R	1489	181	85	214.90	223.90	225.23	234.43	238.46
C	104	1109	8.9	85	183.55	192.50	—	—	—
C	204	1109	8.9	85	194.03	202.93	—	—	—
C	304	1489	181	85	204.28	213.38	215.61	224.79	228.84
C	105 R	1109	8.9	85	183.55	192.50	—	—	—
C	205 R	1109	8.9	85	194.03	202.93	—	—	—
C	305 R	1489	181	85	204.28	213.38	215.61	224.79	228.84
D	104 R	1109	8.9	85	181.52	190.52	—	—	—
D	204 R	1109	8.9	85	191.88	200.88	—	—	—
D	304 R	1489	181	85	202.23	211.23	212.63	221.78	225.86
D	103	1109	8.9	85	181.52	190.52	—	—	—
D	203	1109	8.9	85	191.88	200.88	—	—	—
D	303	1489	181	85	202.23	211.23	212.63	221.78	225.86

R = REVERSE FLOOR PLAN



**CONCEPT ENGINEERING, INC.**  
 455 RAMBER BOULEVARD NORTH, SUITE 200  
 ISSAQUAH, WASHINGTON 98027  
 (425) 392-8055 FAX (425) 392-0108

DATE: 7-17-2000      JOB NO. 99546PC