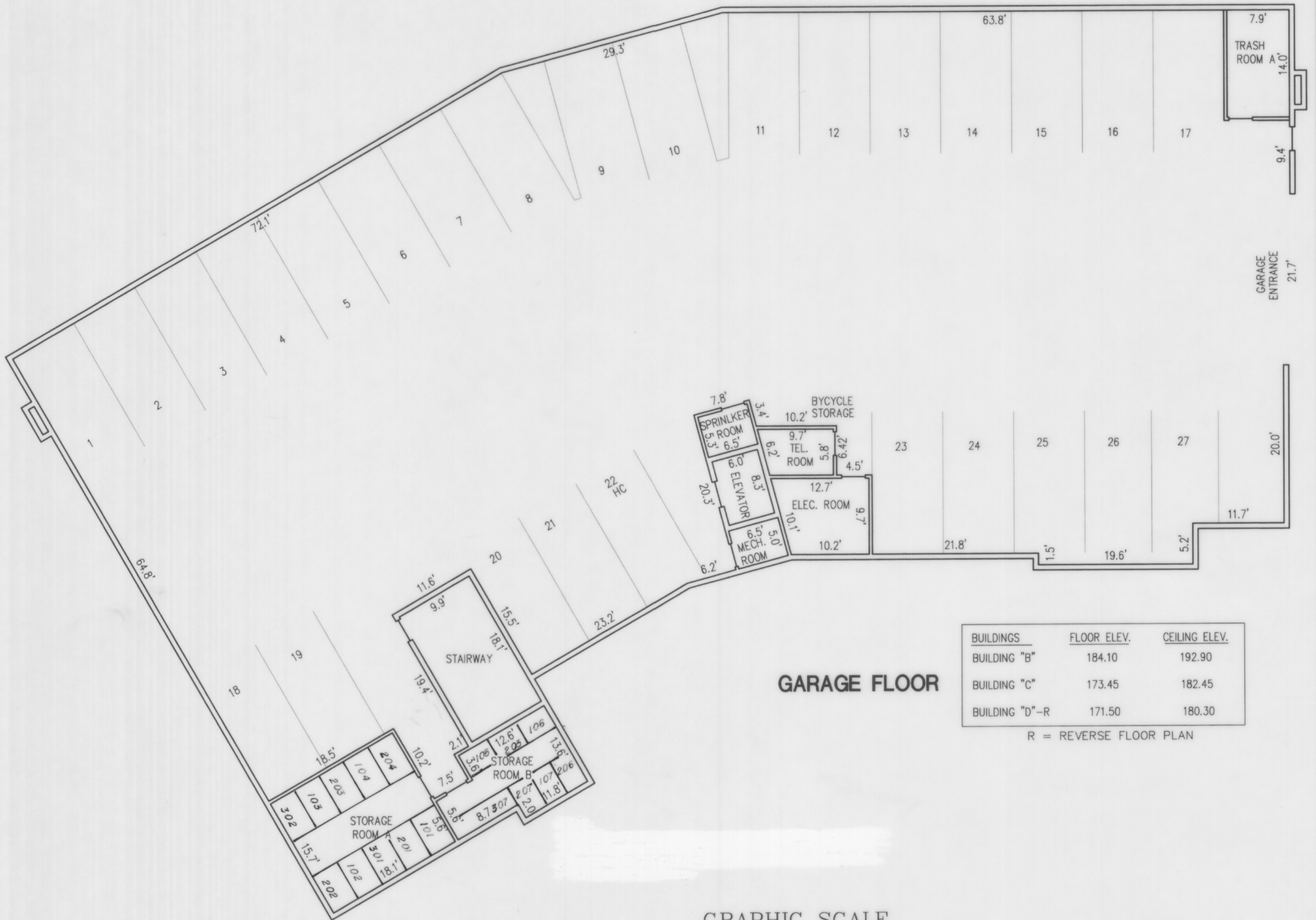


KELKARI A CONDOMINIUM, PHASES 1, 2, & 3

SITUATE IN THE E 1/2, OF SE 1/4, SEC. 33, T. 24 N., R. 6 E., W.M.,
CITY OF ISSAQUAH, KING COUNTY, WASHINGTON

GARAGE DIMENSIONS

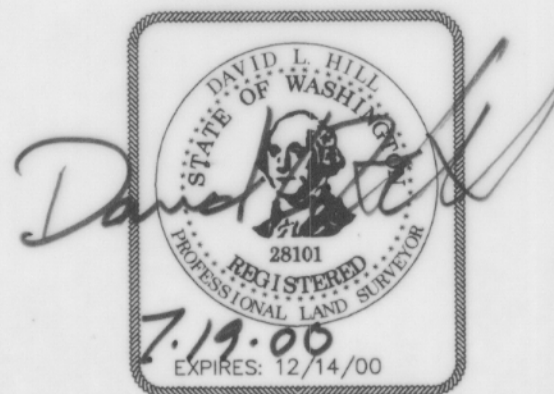
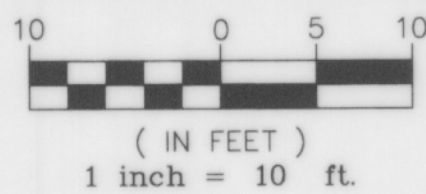


GARAGE FLOOR

BUILDINGS	FLOOR ELEV.	CEILING ELEV.
BUILDING "B"	184.10	192.90
BUILDING "C"	173.45	182.45
BUILDING "D"-R	171.50	180.30

R = REVERSE FLOOR PLAN

GRAPHIC SCALE



CONCEPT ENGINEERING, INC.
465 RAINIER BOULEVARD NORTH, SUITE 200
ISSAQUAH, WASHINGTON 98027
(425) 382-8055 FAX (425) 382-0108