

# MILES AND BRADY'S

SUBDIVISION IN  
ISSAQUAH WASH

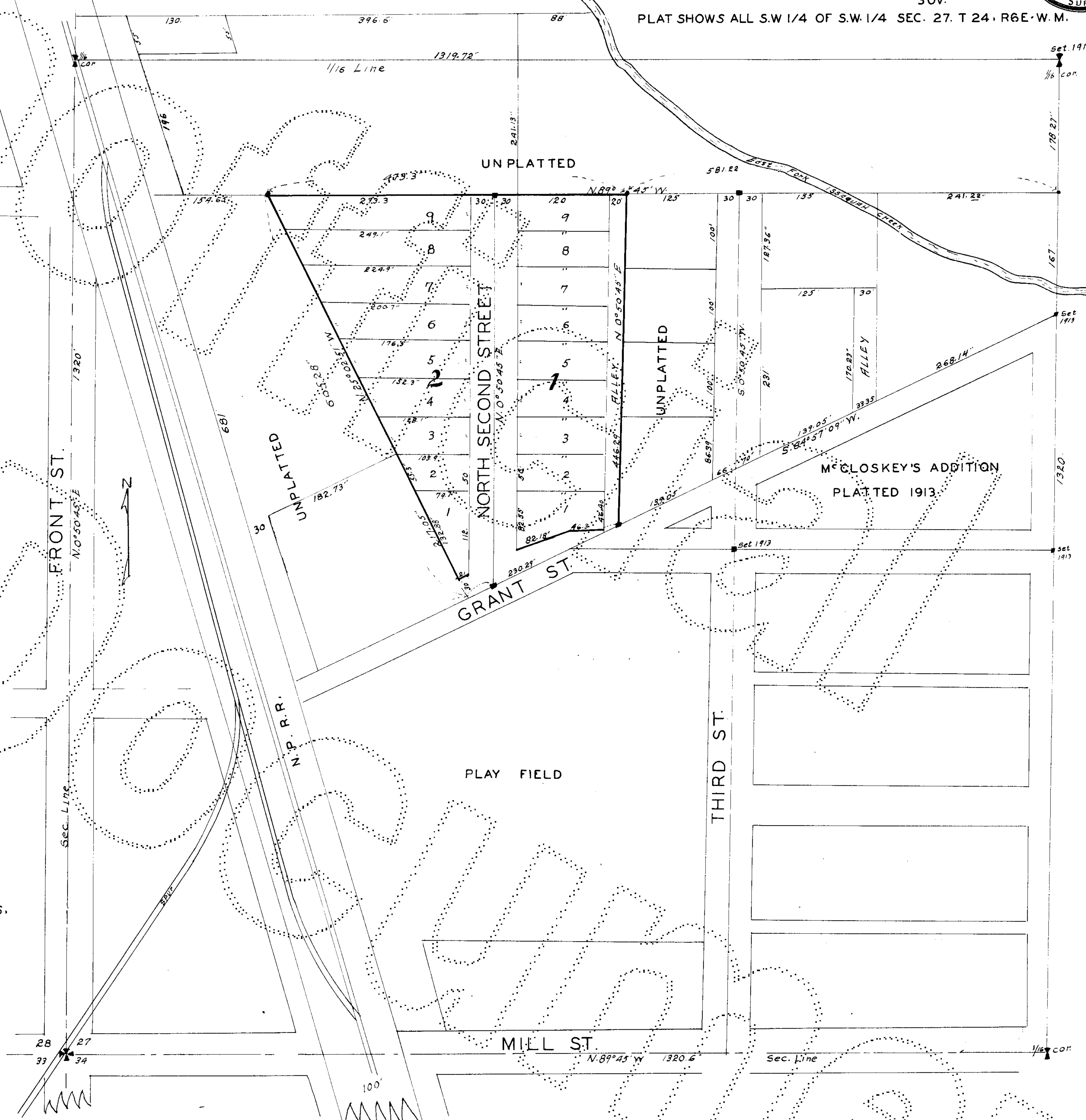
SCALE: 1"=100'

CREEK NORTH CITY LIMITS

NOV. 1938

CHAS. F. HOLT  
SUV.

PLAT SHOWS ALL S.W. 1/4 OF S.W. 1/4 SEC. 27. T 24. R 6E. W. M.



FILED FOR RECORD AT THE REQUEST  
OF LEONARD MILES AT 21 MIN. PAST  
4 P.M THIS 28 DAY OF FEB. A.D. 1939  
AND RECORDED IN VOL. 35 OF PLATS.  
AT PAGE 22 RECORDS OF KING CO.  
WASHINGTON

EARL MILLIKIN  
COUNTY AUDITOR

## DESCRIPTION

COMMENCING AT THE N.E. COR. OF S.W. 1/4 OF S.W. 1/4 SEC. 27. TWP. 24N. RANGE. 6 EAST W.M. THENCE S. 0° 50' 45" W. 178' 27", THENCE N. 89° 45' W. 581. 22" TO THE TRUE POINT BEGINNING. THENCE S 0° 50' 45" W. 446' 29", THENCE S. 64° 57' 09" W. 230' 29", THENCE N 25° 02' 51" W. 605' 28", THENCE S. 89° 45' E. 473' 3" TO TRUE POINT BEGINNING. CONTAINING 3.98/100 ACRES MORE OR LESS

APPROVED BY RESOLUTION OF CITY COUNCIL 5TH DAY OF DEC 1938

W.C. MITCHELL  
MAYOR

TOWN OF ISSAQUAH

3033870

## DEDICATION

KNOW ALL MEN BY THESE PRESENTS, THAT WE LEONARD MILES AND MARY E. MILES HUSBAND AND WIFE ARE OWNERS IN FEE SIMPLE OF THE LAND EMBRACED IN THIS PLAT MILES AND BRADY'S SUBDIVISION OF ISSAQUAH, AND WE HEREBY DECLARE THIS PLAT AND DEDICATE TO THE USE OF THE PUBLIC FOREVER ALL STREETS AND ALLEYS PLATTED HEREON.

IN WITNESS WHEREOF WE HAVE HEREUNTO SET OUR HANDS AND SEALS THIS 9TH DAY OF DECEMBER A.D. 1938

IN PRESENCE OF

LEANOR MILES  
MARY E. MILES

## ACKNOWLEDGEMENT

STATE OF WASH  
CO. OF KING:

I, A. J. PETERS, NOTARY PUBLIC IN AND FOR KING CO. STATE OF WASH. DO HEREBY CERTIFY THAT ON THIS 9TH DAY OF DECEMBER 1938 PERSONALLY APPEARED LEONARD MILES MARY E. MILES TO ME KNOWN TO BE THE INDIVIDUALS DESCRIBED AND WHO EXECUTED THIS PLAT AND ACKNOWLEDGED THAT THEY SIGNED AND SEALED THE SAME AS THEIR FREE AND VOLUNTARY ACT AND DEED FOR THE USAGES AND PURPOSES THEREIN MENTIONED AND SET FORTH: WITNESS MY HAND AND SEAL THIS 9TH DAY OF DECEMBER 1938

A. J. PETERS

