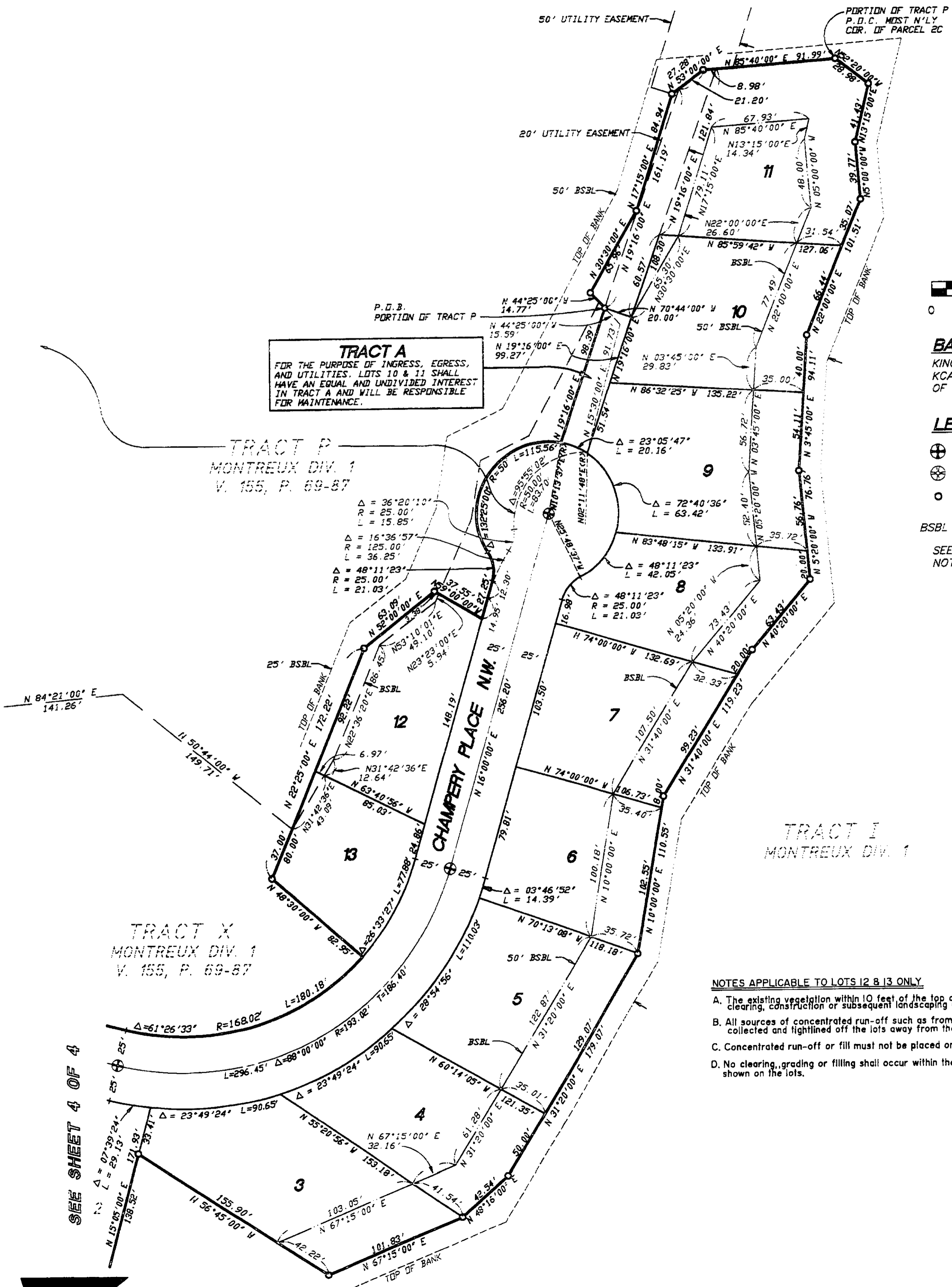


# MONTREUX DIVISION FOUR

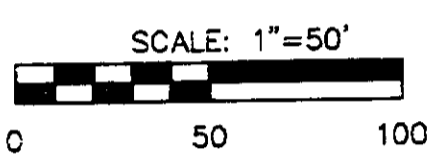
A REPLAT OF PARCEL 2C AND A PORTION OF TRACT P OF MONTREUX DIVISION ONE  
 SEC. 19, TWP. 24 N., RGE. 6 E., W.M.  
 CITY OF ISSAQUAH, KING COUNTY, WASHINGTON



**TRACT A**  
 FOR THE PURPOSE OF INGRESS, EGRESS,  
 AND UTILITIES, LOTS 10 & 11 SHALL  
 HAVE AN EQUAL AND UNDIVIDED INTEREST  
 IN TRACT A AND WILL BE RESPONSIBLE  
 FOR MAINTENANCE.

TRACT P  
 MONTREUX DIV. 1  
 V. 155, P. 69-87

TRACT X  
 MONTREUX DIV. 1  
 V. 155, P. 69-87



**BASIS OF BEARING:**  
 KING COUNTY AERIAL SURVEY (KCAS) HELD  
 KCAS BEARING ALONG E-W CENTERLINE  
 OF SEC. 19-24-6. (N 87°36'28" W)

- LEGEND**
- ⊕ SET MONUMENT IN CASE
  - ⊗ MONUMENT IN CASE (FOUND)
  - SET 3/4" IRON PIPE W/  
PLASTIC CAP, L.S. #15025
  - BSBL BUILDING SETBACK LINE
- SEE SHEET 2 OF 4 FOR  
 NOTES, EASEMENTS & BSBL.

- NOTES APPLICABLE TO LOTS 12 & 13 ONLY**
- A. The existing vegetation within 10 feet of the top of bank shall not be disturbed during clearing, construction or subsequent landscaping activities.
  - B. All sources of concentrated run-off such as from roofs, patios, or pavement should be collected and lightened off the lots away from the slopes.
  - C. Concentrated run-off or fill must not be placed on or over the top of the slope.
  - D. No clearing, grading or filling shall occur within the 25-foot building setback line shown on the lots.

SEE SHEET 4 OF 4

**GeoDimensions**  
 1601 114th Avenue Southeast  
 Alderwood Building Suite 110  
 Bellevue, Washington 98004  
 (206) 846-0225  
 (206) 846-0801 FAX

Civil Engineering  
 Land Surveying  
 Planning  
 Construction Services  
 Water Resources  
 Environmental Sciences



187  
 10