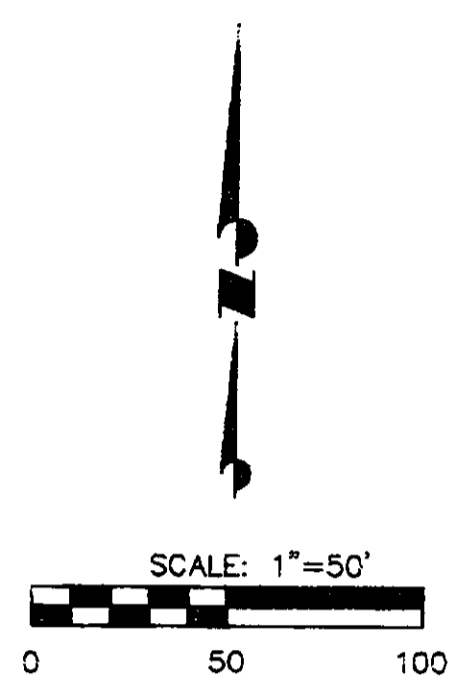
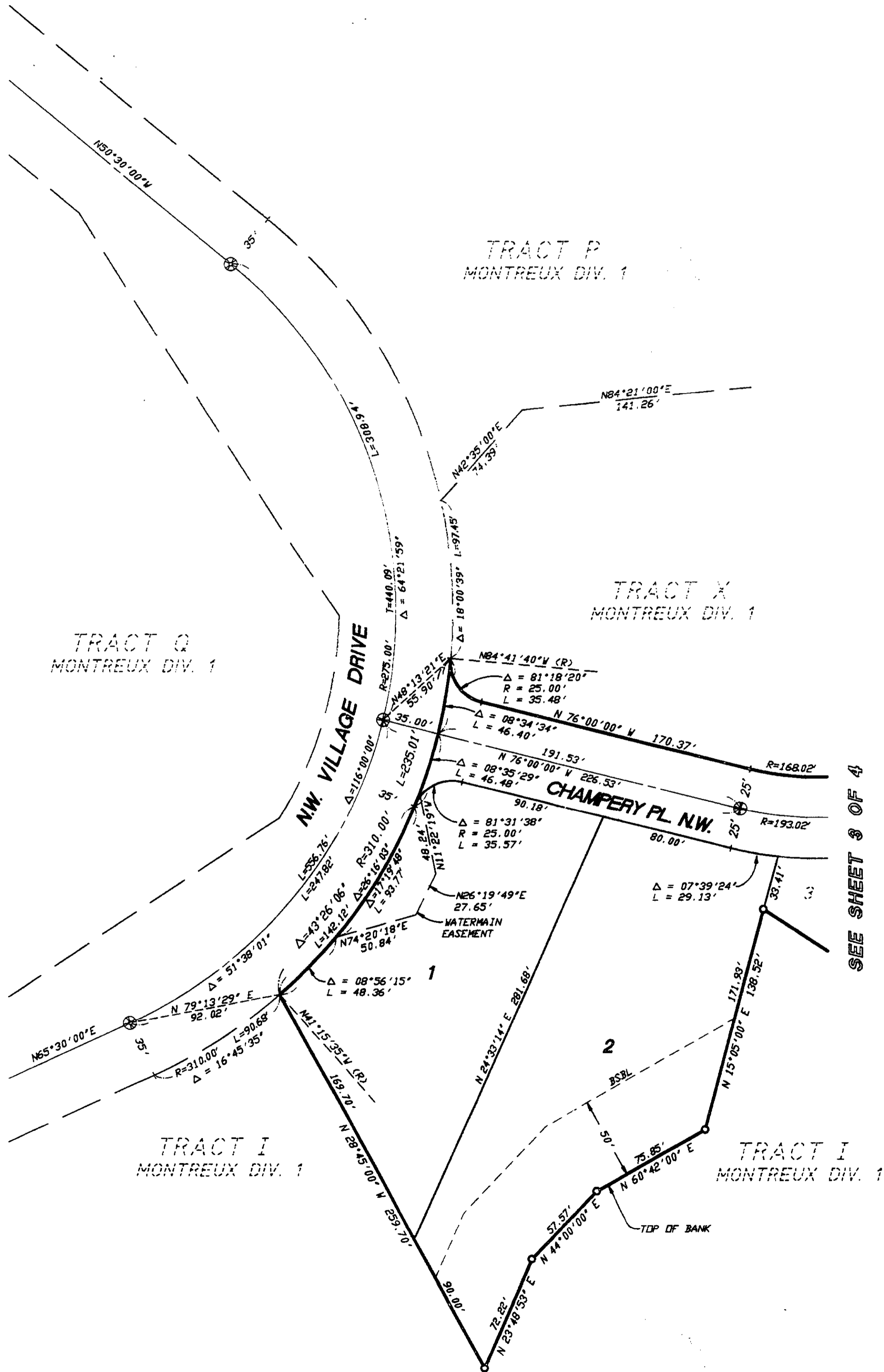


MONTREUX DIVISION FOUR

A REPLAT OF PARCEL 2C AND A PORTION OF TRACT P OF MONTREUX DIVISION ONE
 SEC. 19, TWP. 24 N., RGE. 6 E., W.M.
 CITY OF ISSAQUAH, KING COUNTY, WASHINGTON



BASIS OF BEARING:
 KING COUNTY AERIAL SURVEY (KCAS) HELD
 KCAS BEARING ALONG E-W CENTERLINE
 OF SEC. 19-24-6. (N 87°36'28" W)

- LEGEND**
- ⊕ SET MONUMENT IN CASE
 - ⊗ MONUMENT IN CASE (FOUND)
 - SET 3/4" IRON PIPE W/
PLASTIC CAP, L.S. #15025
 - BSBL BUILDING SETBACK LINE
- SEE SHEET 2 OF 4 FOR
 NOTES, EASEMENTS & BSBL

SEE SHEET 3 OF 4



187
 11