

MONTREUX DIVISION ONE

SEC. 19, TWP. 24 N., RGE. 6 E., W.M.
KING COUNTY, WASHINGTON

WARNING!

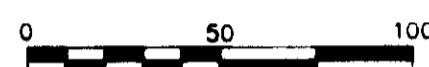
NATIVE GROWTH PROTECTION AND BUILDING SETBACK RESTRICTIONS

The natural vegetation inside the Native Growth Protection Easement (NGPE) shall not be altered without express written permission from King County Building and Land Division Technical Services Section or its successor agency. Placement of structures, fills and obstructions of any kind are strictly prohibited within identified Building Set Back (BSBL) areas. Violations of these provisions will result in a STOP WORK ORDER, NOTICE AND ORDER, AND/OR CIVIL PENALTIES.

This WARNING is only a summary of the complete NGPE and BSBL text and does not reduce, change or modify NGPE AND/OR BSBL restrictions as found in note number 1 on sheet 1 of 19.



SCALE 1" = 50'

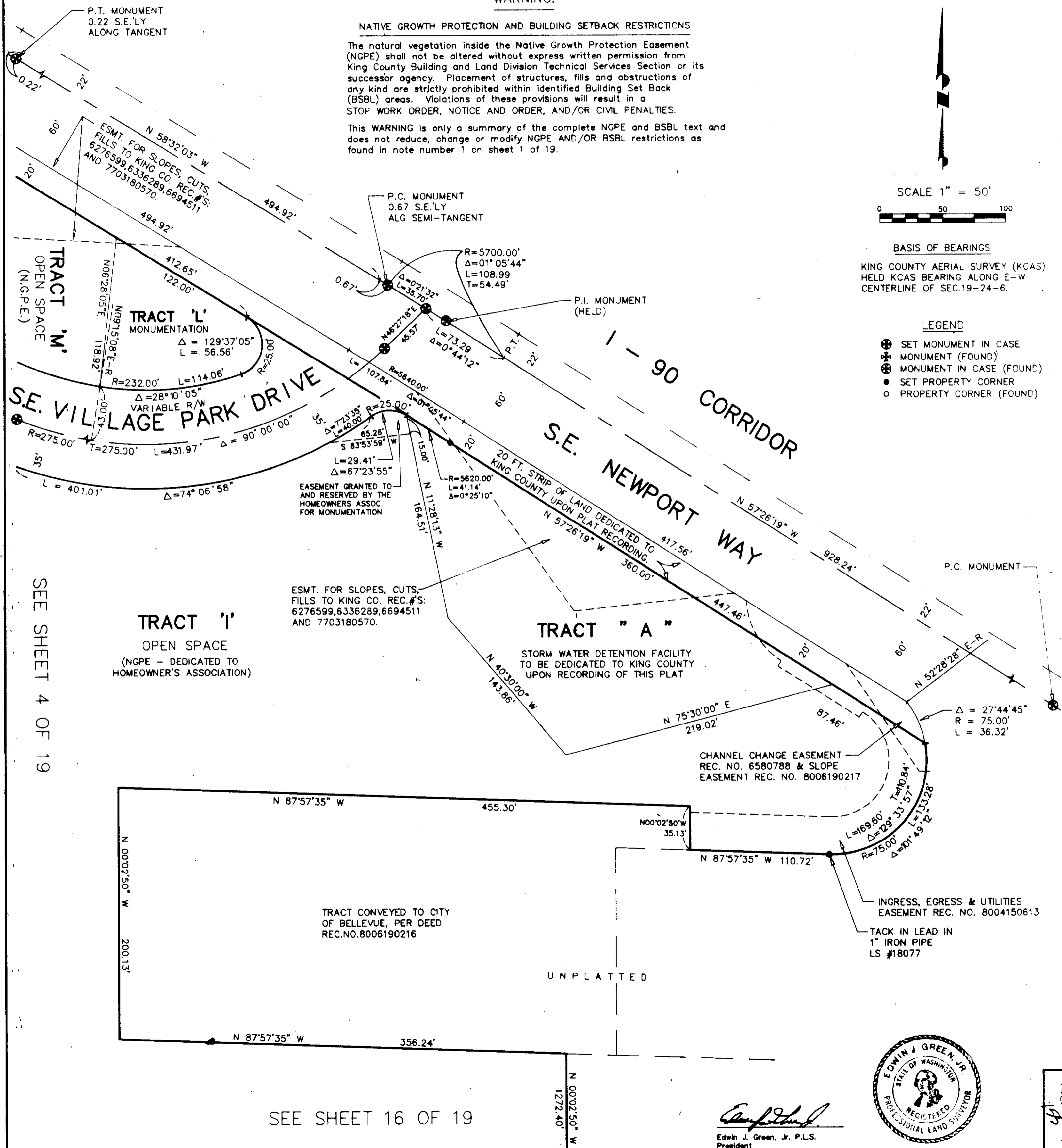


BASIS OF BEARINGS

KING COUNTY AERIAL SURVEY (KCAS)
HELD KCAS BEARING ALONG E-W
CENTERLINE OF SEC.19-24-6.

LEGEND

- ⊕ SET MONUMENT IN CASE
- ⊗ MONUMENT (FOUND)
- ⊙ MONUMENT IN CASE (FOUND)
- SET PROPERTY CORNER
- PROPERTY CORNER (FOUND)



SEE SHEET 4 OF 19

TRACT 'I'
OPEN SPACE
(NGPE - DEDICATED TO
HOMEOWNER'S ASSOCIATION)

ESMT. FOR SLOPES, CUTS,
FILLS TO KING CO. REC.#S:
6276599,6336289,6694511
AND 7703180570.

TRACT "A"
STORM WATER DETENTION FACILITY
TO BE DEDICATED TO KING COUNTY
UPON RECORDING OF THIS PLAT

TRACT CONVEYED TO CITY
OF BELLEVUE, PER DEED
REC.NO.8006190216

UNPLATTED

SEE SHEET 16 OF 19



Edwin J. Green, Jr.
Edwin J. Green, Jr. P.L.S.
President
Certificate No. 15025

GEO-DIMENSIONS, INC.
10230 NE POINTS DR, KIRKLAND, WA (206)827-5855

SHT. 3 OF 19