

# MONTREUX DIVISION ONE

SEC. 19, TWP. 24 N., RGE. 6 E., W.M.  
KING COUNTY, WASHINGTON

## WARNING!

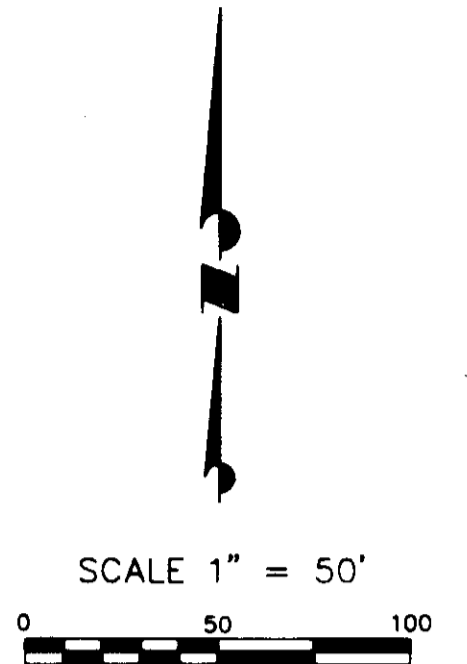
### NATIVE GROWTH PROTECTION AND BUILDING SETBACK RESTRICTIONS

The natural vegetation inside the Native Growth Protection Easement (NGPE) shall not be altered without express written permission from King County Building and Land Division Technical Services Section or its successor agency. Placement of structures, fills and obstructions of any kind are strictly prohibited within identified Building Set Back (BSBL) areas. Violations of these provisions will result in a STOP WORK ORDER, NOTICE AND ORDER, AND/OR CIVIL PENALTIES.

This WARNING is only a summary of the complete NGPE and BSBL text and does not reduce, change or modify NGPE AND/OR BSBL restrictions as found in note number 1 on sheet 1 of 19.

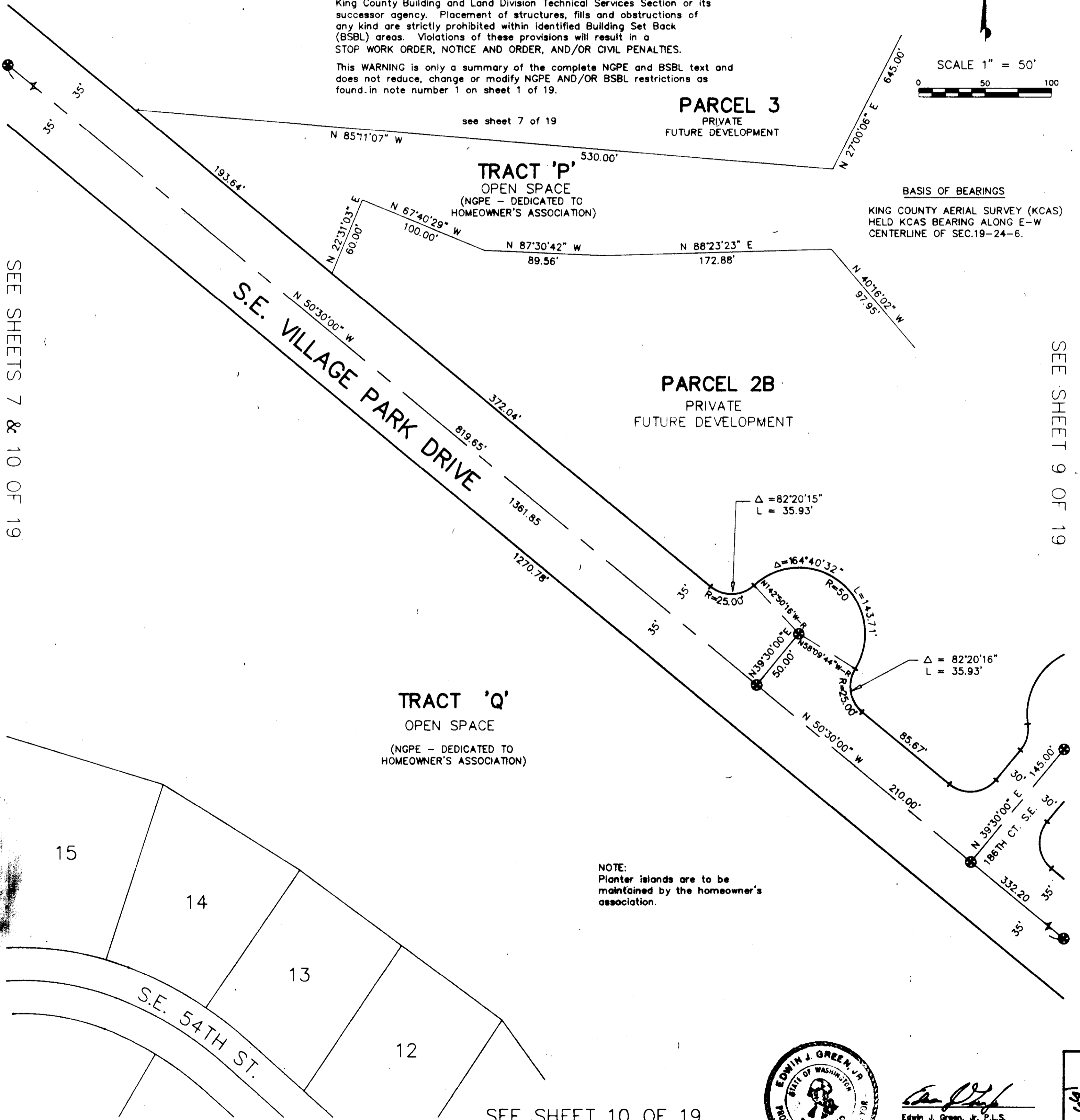
### LEGEND

- ⊕ SET MONUMENT IN CASE
- ⊕ MONUMENT (FOUND)
- ⊕ MONUMENT IN CASE (FOUND)
- SET PROPERTY CORNER
- PROPERTY CORNER (FOUND)



### BASIS OF BEARINGS

KING COUNTY AERIAL SURVEY (KCAS)  
HELD KCAS BEARING ALONG E-W  
CENTERLINE OF SEC.19-24-6.



SEE SHEETS 7 & 10 OF 19

SEE SHEET 9 OF 19

### TRACT 'Q'

OPEN SPACE  
(NGPE - DEDICATED TO  
HOMEOWNER'S ASSOCIATION)

NOTE:  
Planter islands are to be  
maintained by the homeowner's  
association.

SEE SHEET 10 OF 19



*Edwin J. Green, Jr.*  
Edwin J. Green, Jr. P.L.S.  
President  
Certificate No. 15025

VOL. 165 Pg. 112