

MONTREUX DIVISION ONE

SEC. 19, TWP. 24 N., RGE. 6 E., W.M.
KING COUNTY, WASHINGTON

WARNING!

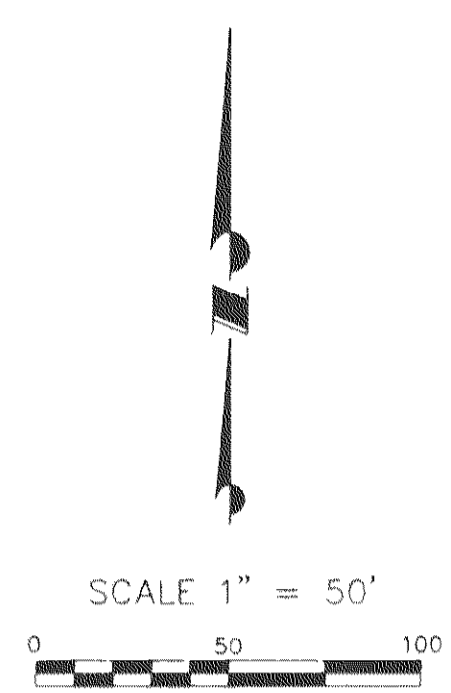
NATIVE GROWTH PROTECTION AND BUILDING SETBACK RESTRICTIONS

The natural vegetation inside the Native Growth Protection Easement (NGPE) shall not be altered without express written permission from King County Building and Land Division Technical Services Section or its successor agency. Placement of structures, fills and obstructions of any kind are strictly prohibited within identified Building Set Back (BSBL) areas. Violations of these provisions will result in a STOP WORK ORDER, NOTICE AND ORDER, AND/OR CIVIL PENALTIES.

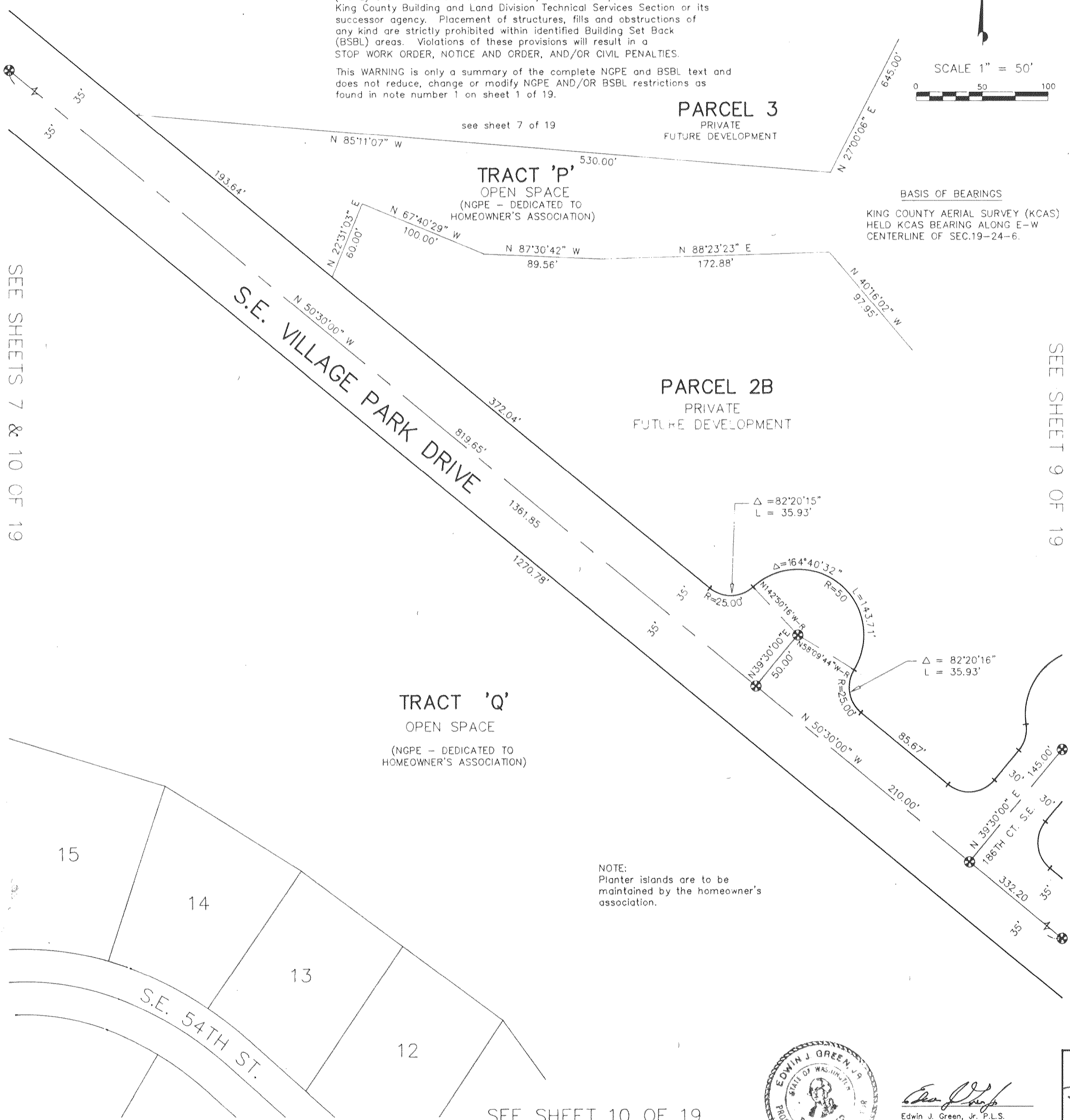
This WARNING is only a summary of the complete NGPE and BSBL text and does not reduce, change or modify NGPE AND/OR BSBL restrictions as found in note number 1 on sheet 1 of 19.

LEGEND

- ⊕ SET MONUMENT IN CASE
- ⊗ MONUMENT (FOUND)
- ⊙ MONUMENT IN CASE (FOUND)
- SET PROPERTY CORNER
- PROPERTY CORNER (FOUND)



BASIS OF BEARINGS
KING COUNTY AERIAL SURVEY (KCAS)
HELD KCAS BEARING ALONG E-W
CENTERLINE OF SEC.19-24-6.



SEE SHEETS 7 & 10 OF 19

SEE SHEET 9 OF 19

SEE SHEET 10 OF 19



Edwin J. Green, Jr.
Edwin J. Green, Jr. P.L.S.
President
Certificate No. 15025

VOL. 155 PG. 116

910-1914