

N.W. COR. SEC.
2"x2" WOOD POST
5-89

13 18
24 19

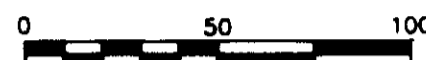
MONTREUX DIVISION ONE

SEC. 19, TWP. 24 N., RGE. 6 E., W.M.
KING COUNTY, WASHINGTON

SEE SHEET 14 OF 19



SCALE 1" = 50'



BASIS OF BEARINGS

KING COUNTY AERIAL SURVEY (KCAS)
HELD KCAS BEARING ALONG E-W
CENTERLINE OF SEC.19-24-6.

LEGEND

- ⊕ SET MONUMENT IN CASE
- ⊕ MONUMENT (FOUND)
- ⊕ MONUMENT IN CASE (FOUND)
- SET PROPERTY CORNER
- PROPERTY CORNER (FOUND)

TRAIL NOTE:
Limited activities associated with the clearing, construction & maintenance of the new Practice Trail & Peggy's Trail & associated connections by the homeowner's association will be allowed within the NGPE in accordance with plans for these trails approved by the then governing agency.

NEW CASTLE FIVE ACRE TRACTS
VOL. 8 PG. 56

WEST LINE OF SEC. 19-24-4 180TH AVE. S.E.

UNPLATTED

CONC. MON.
W 1/4 COR.
5-89

24 19

N 01°30'19" E 338.39'

N 01°30'19" E 1274.29'

N 30°40'46" E-R

N 30°40'46" E-R

SEE SHEET 19 OF 19

GEO-DIMENSIONS, INC.
10230 NE POINTS DR, KIRKLAND, WA (206)827-5855

B.A.L.D. File No. 1187-4

SHT. 15 OF 19



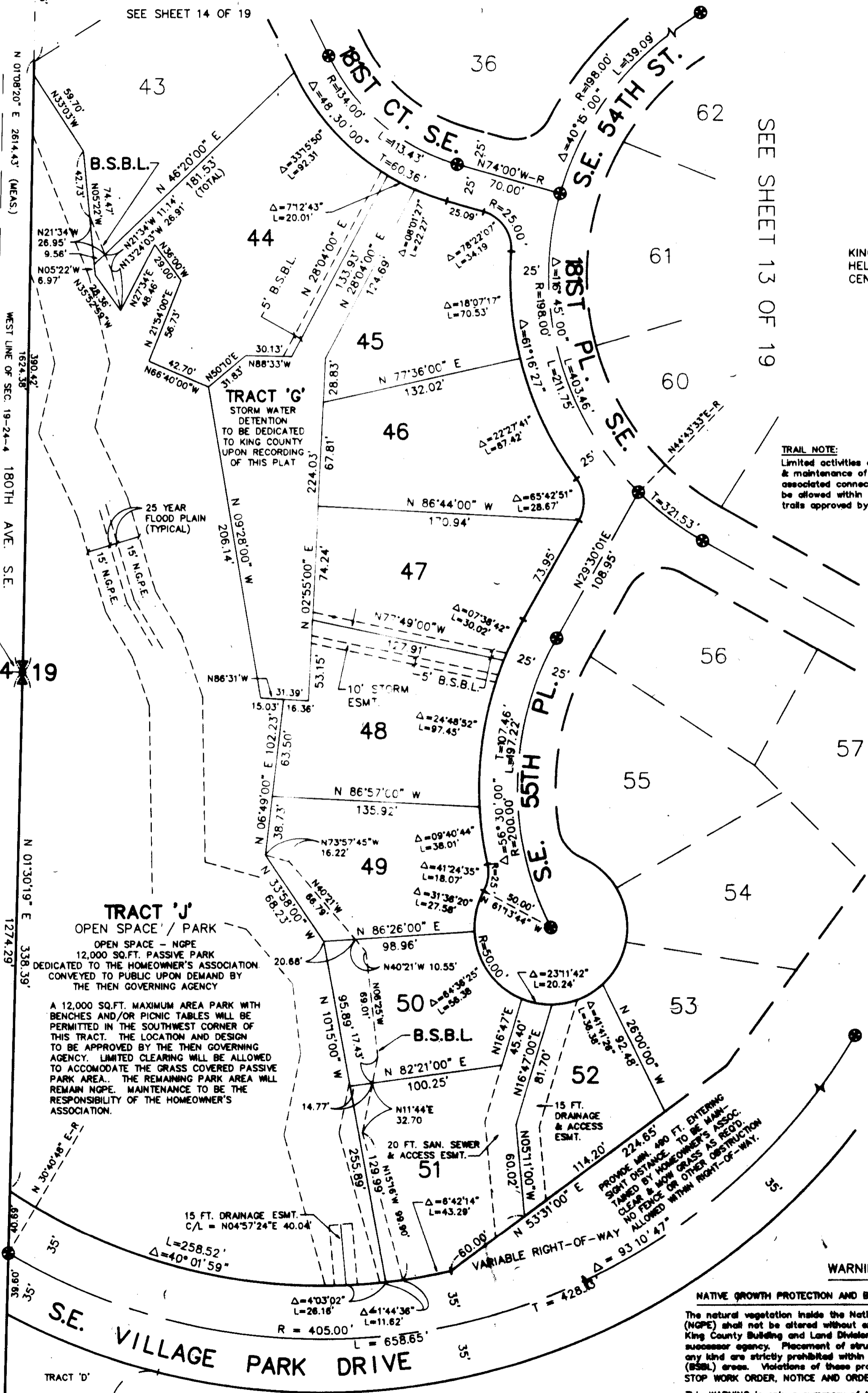
Edwin J. Green, Jr. P.L.S.
President
Certificate No. 15025

WARNING!

NATIVE GROWTH PROTECTION AND BUILDING SETBACK RESTRICTIONS

The natural vegetation inside the Native Growth Protection Easement (NGPE) shall not be altered without express written permission from King County Building and Land Division Technical Services Section or its successor agency. Placement of structures, fills and obstructions of any kind are strictly prohibited within identified Building Set Back (BSBL) areas. Violations of these provisions will result in a STOP WORK ORDER, NOTICE AND ORDER, AND/OR CIVIL PENALTIES.

This WARNING is only a summary of the complete NGPE and BSBL text and does not reduce, change or modify NGPE AND/OR BSBL restrictions as found in note number 1 on sheet 1 of 19.



VOL. 156 PG. 59

90-194