

MONTREUX DIVISION ONE

SEC. 19, TWP. 24 N., RGE. 6 E., W.M.
KING COUNTY, WASHINGTON

13 18
24 19

UNPLATTED

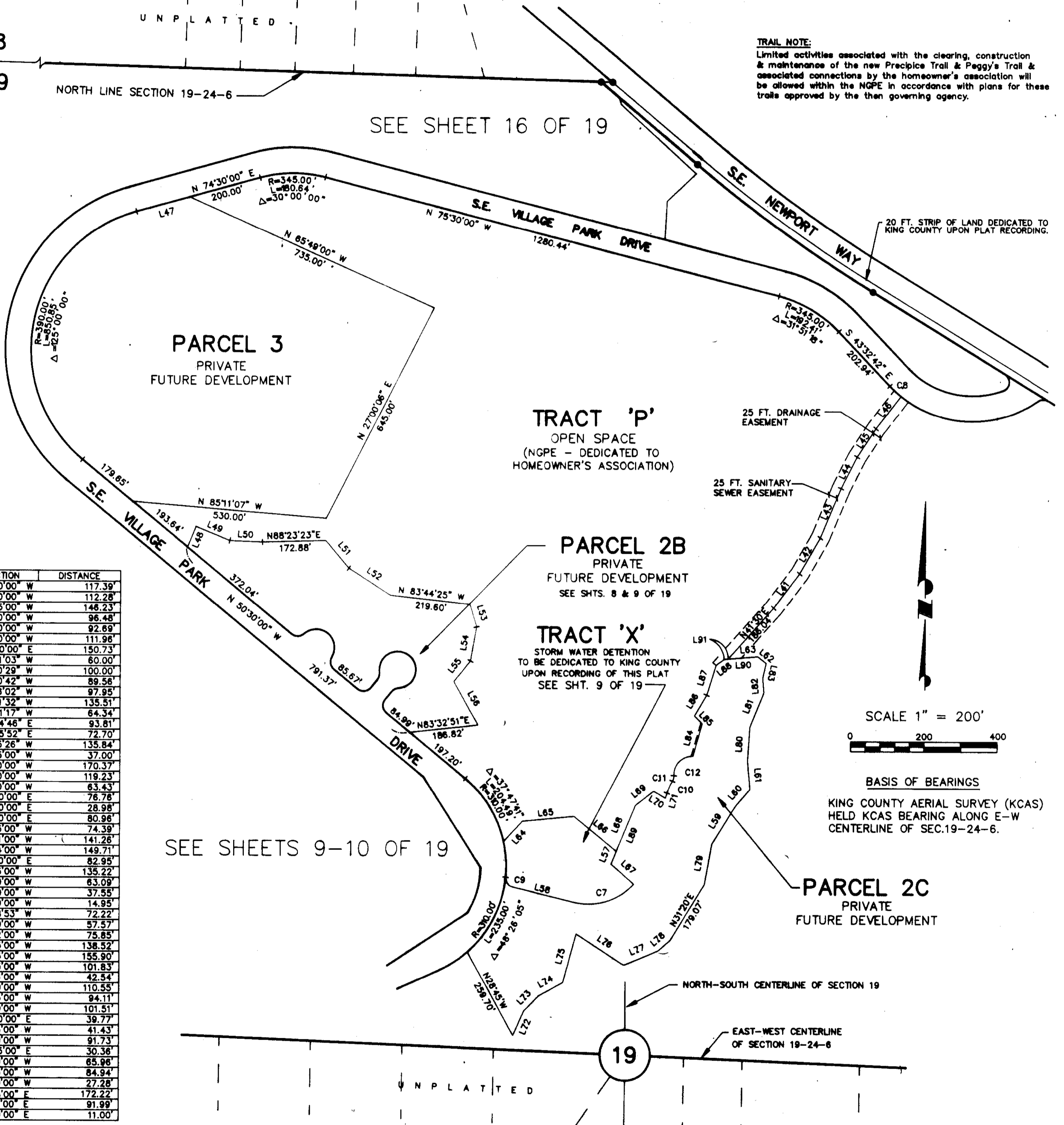
NORTH LINE SECTION 19-24-6

SEE SHEET 16 OF 19

TRAIL NOTE:

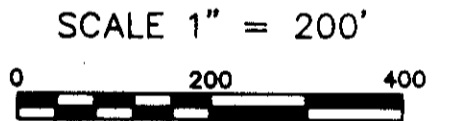
Limited activities associated with the clearing, construction & maintenance of the new Precipice Trail & Peggy's Trail & associated connections by the homeowner's association will be allowed within the NGPE in accordance with plans for these trails approved by the then governing agency.

SEE SHEET 18 OF 19



LINE	DIRECTION	DISTANCE
L41	S 37°00'00" W	117.39'
L42	S 29°40'00" W	112.28'
L43	S 22°35'00" W	146.23'
L44	S 26°40'00" W	96.48'
L45	S 33°20'00" W	92.69'
L46	S 37°30'00" W	111.96'
L47	N 74°30'00" E	150.73'
L48	S 22°31'03" W	80.00'
L49	N 67°40'29" W	100.00'
L50	N 87°30'42" W	89.56'
L51	N 40°18'02" W	97.95'
L52	N 57°11'32" W	135.51'
L53	N 16°31'17" W	84.34'
L54	N 10°14'46" E	93.81'
L55	N 38°55'52" E	72.70'
L56	N 29°35'26" W	135.84'
L57	S 22°25'00" W	37.00'
L58	N 78°00'00" W	170.37'
L59	S 31°40'00" W	119.23'
L60	S 40°20'00" W	63.43'
L61	S 05°20'00" E	76.78'
L62	S 52°20'00" E	28.98'
L63	N 85°40'00" E	80.96'
L64	S 42°35'00" W	74.39'
L65	S 84°21'00" W	141.26'
L66	N 50°44'00" W	149.71'
L67	S 48°30'00" E	82.95'
L68	S 22°25'00" W	135.22'
L69	S 52°00'00" W	63.09'
L70	N 59°00'00" W	37.55'
L71	S 16°00'00" W	14.95'
L72	S 23°48'53" W	72.22'
L73	S 44°00'00" W	57.57'
L74	S 60°42'00" W	75.85'
L75	S 15°05'00" W	138.52'
L76	N 56°45'00" W	155.90'
L77	S 67°15'00" W	101.83'
L78	S 48°16'00" W	42.54'
L79	S 10°00'00" W	110.55'
L80	S 03°45'00" W	94.11'
L81	S 22°00'00" W	101.51'
L82	S 05°00'00" E	39.77'
L83	S 13°15'00" W	41.43'
L84	S 15°30'00" W	91.73'
L85	S 44°25'00" E	30.36'
L86	S 30°30'00" W	65.96'
L87	S 17°15'00" W	84.94'
L88	S 53°00'00" W	27.26'
L89	N 22°25'00" E	172.22'
L90	N 85°40'00" E	91.99'
L91	N 85°40'00" E	11.00'

SEE SHEETS 9-10 OF 19



BASIS OF BEARINGS
KING COUNTY AERIAL SURVEY (KCAS)
HELD KCAS BEARING ALONG E-W
CENTERLINE OF SEC.19-24-6.

PARCEL 2C
PRIVATE
FUTURE DEVELOPMENT

WARNING!

NATIVE GROWTH PROTECTION AND BUILDING SETBACK RESTRICTIONS

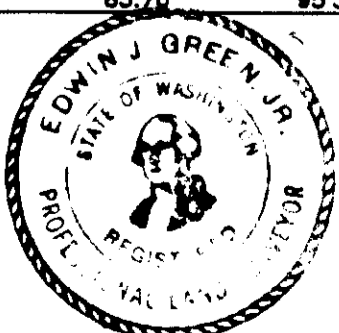
The natural vegetation inside the Native Growth Protection Easement (NGPE) shall not be altered without express written permission from King County Building and Land Division Technical Services Section or its successor agency. Placement of structures, fills and obstructions of any kind are strictly prohibited within identified Building Set Back (BSBL) areas. Violations of these provisions will result in a STOP WORK ORDER, NOTICE AND ORDER, AND/OR CIVIL PENALTIES.

This WARNING is only a summary of the complete NGPE and BSBL text and does not reduce, change or modify NGPE AND/OR BSBL restrictions as found in note number 1 on sheet 1 of 19.

LEGEND

- ⊕ SET MONUMENT IN CASE
- ⊕ MONUMENT (FOUND)
- ⊕ MONUMENT IN CASE (FOUND)
- SET PROPERTY CORNER
- PROPERTY CORNER (FOUND)

CURVE	RADIUS	LENGTH	DELTA
C7	168.02'	180.18'	81°28'33"
C8	310.00'	41.10'	07°35'44"
C9	25.00'	35.48'	81°18'20"
C10	125.00'	36.25'	16°36'56"
C11	25.00'	15.85'	36°20'08"
C12	50.00'	83.70'	95°55'01"



Edwin J. Green, Jr. P.L.S.
President
Certificate No. 15025

GEO-DIMENSIONS, INC.
10230 NE POINTS DR, KIRKLAND, WA (206)827-5855