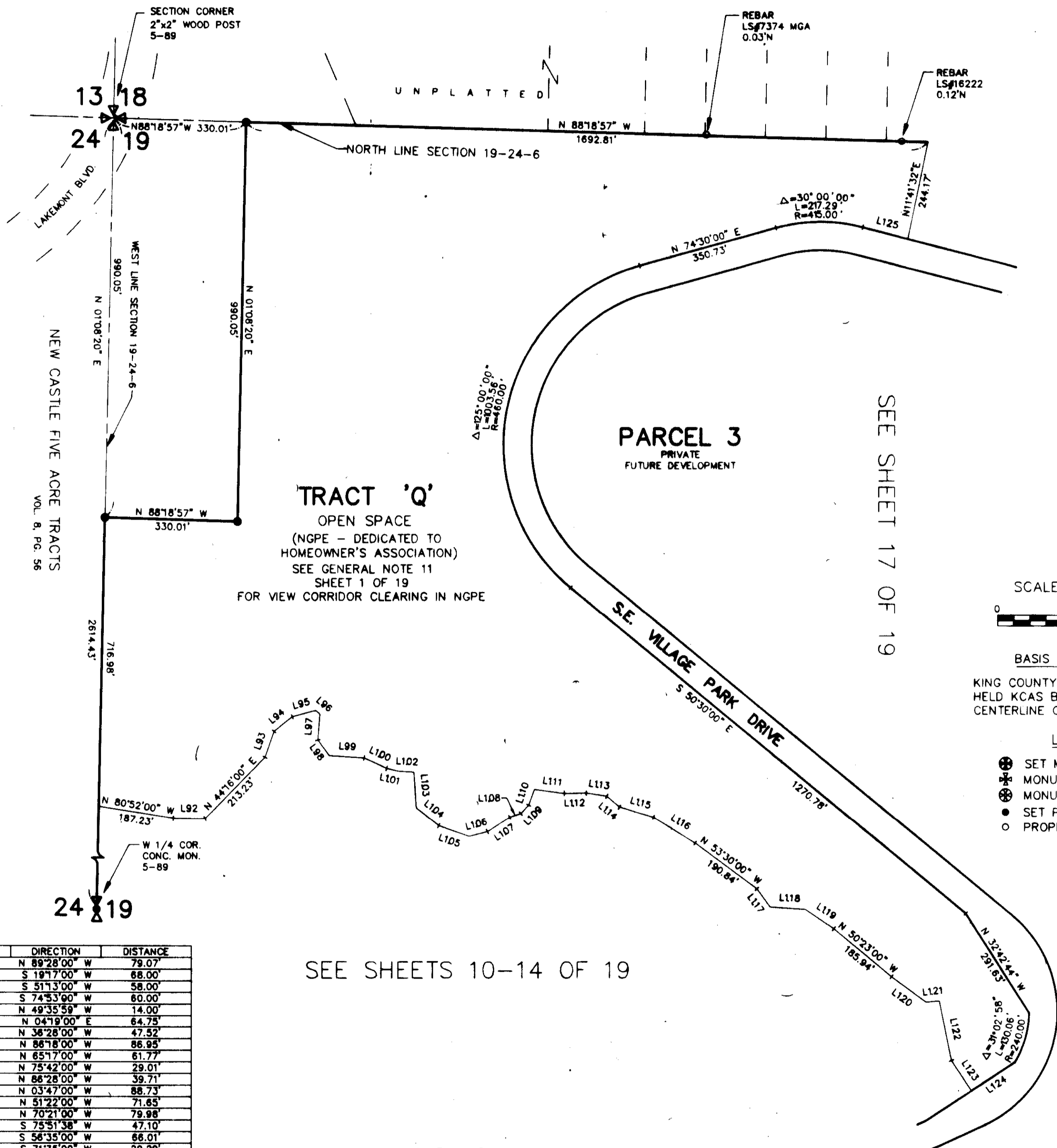


# MONTREUX DIVISION ONE

SEC. 19, TWP. 24 N., RGE. 6 E., W.M.  
KING COUNTY, WASHINGTON

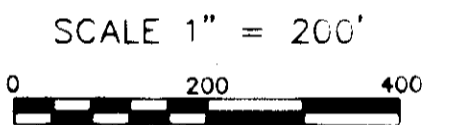


SEE SHEET 17 OF 19

**TRACT 'Q'**  
OPEN SPACE  
(NGPE - DEDICATED TO HOMEOWNER'S ASSOCIATION)  
SEE GENERAL NOTE 11  
SHEET 1 OF 19  
FOR VIEW CORRIDOR CLEARING IN NGPE

**PARCEL 3**  
PRIVATE  
FUTURE DEVELOPMENT

**SE VILLAGE PARK DRIVE**



**BASIS OF BEARINGS**  
KING COUNTY AERIAL SURVEY (KCA) HELD KCAS BEARING ALONG E-W CENTERLINE OF SEC. 19-24-6.

- LEGEND**
- ⊕ SET MONUMENT IN CASE MONUMENT (FOUND)
  - ⊗ MONUMENT IN CASE (FOUND)
  - SET PROPERTY CORNER
  - PROPERTY CORNER (FOUND)

SEE SHEETS 10-14 OF 19

LINE	DIRECTION	DISTANCE
L92	N 89°28'00" W	79.07
L93	S 19°17'00" W	68.00
L94	S 51°13'00" W	58.00
L95	S 74°53'00" W	60.00
L96	N 49°35'59" W	14.00
L97	N 04°19'00" E	64.75
L98	N 36°28'00" W	47.52
L99	N 86°18'00" W	86.95
L100	N 65°17'00" W	61.77
L101	N 75°42'00" W	29.01
L102	N 66°28'00" W	39.71
L103	N 03°47'00" W	86.73
L104	N 51°22'00" W	71.65
L105	N 70°21'00" W	79.98
L106	S 75°51'38" W	47.10
L107	S 56°35'00" W	66.01
L108	S 71°35'00" W	29.29
L109	S 43°02'00" W	28.89
L110	S 19°54'00" W	41.48
L111	N 82°30'00" W	74.80
L112	S 88°45'00" W	54.42
L113	N 81°06'00" W	51.60
L114	N 49°40'00" W	41.48
L115	N 73°01'00" W	86.15
L116	N 58°05'00" W	121.95
L117	N 36°00'00" W	55.45
L118	N 86°00'00" W	87.62
L119	N 56°07'00" W	85.17
L120	N 53°39'00" W	106.15
L121	S 84°33'00" W	33.17
L122	N 11°27'00" W	151.50
L123	N 33°25'00" W	90.38
L124	S 56°35'00" W	129.39
L125	N 75°30'00" W	115.18

**WARNING!**

**NATIVE GROWTH PROTECTION AND BUILDING SETBACK RESTRICTIONS**

The natural vegetation inside the Native Growth Protection Easement (NGPE) shall not be altered without express written permission from King County Building and Land Division Technical Services Section or its successor agency. Placement of structures, fills and obstructions of any kind are strictly prohibited within identified Building Set Back (BSBL) areas. Violations of these provisions will result in a STOP WORK ORDER, NOTICE AND ORDER, AND/OR CIVIL PENALTIES.

This WARNING is only a summary of the complete NGPE and BSBL text and does not reduce, change or modify NGPE AND/OR BSBL restrictions as found in note number 1 on sheet 1 of 19.

**TRAIL NOTE:**

Limited activities associated with the clearing, construction & maintenance of the new Precipice Trail & Peggy's Trail & associated connections by the homeowner's association will be allowed within the NGPE in accordance with plans for these trails approved by the then governing agency.



*Edwin J. Green, Jr.*  
Edwin J. Green, Jr. P.L.S.  
President  
Certificate No. 15025

VOL. 156 PG. 410