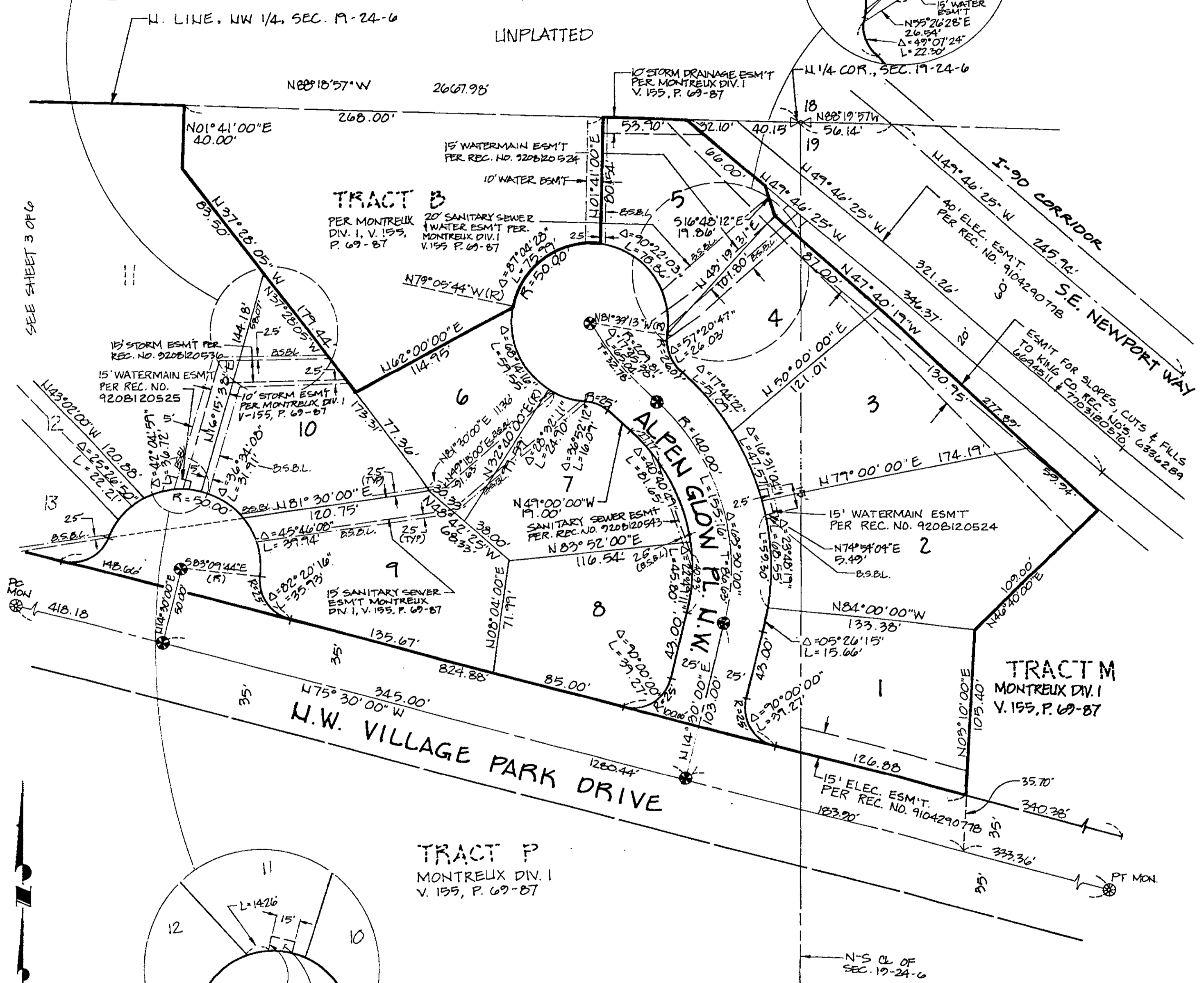
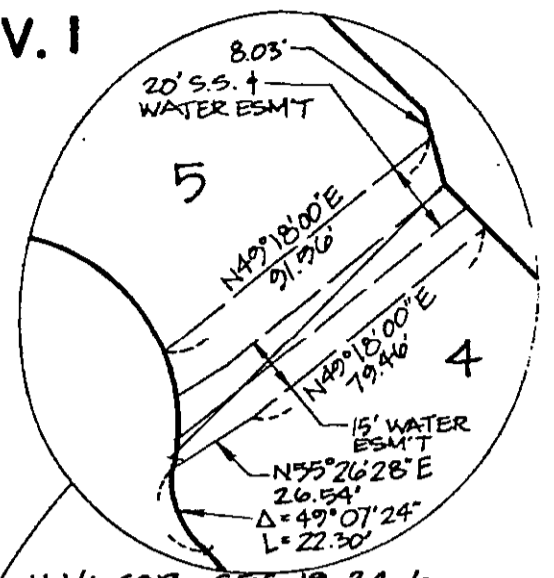
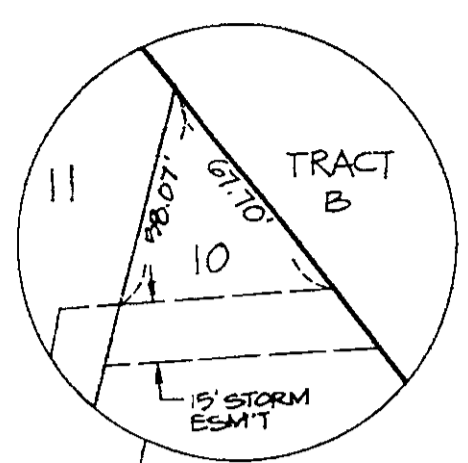


MONTREUX DIVISION THREE

A REPLAT OF PARCELS 2A & 2B, OF MONTREUX DIV. I
SEC. 19, TWP. 24 N., RGE. 6 E., W.M.
CITY OF ISSAQUAH, KING COUNTY, WASHINGTON



SEE SHEET 3 OF 6



SCALE: 1" = 50'
0 50 100

BASIS OF BEARINGS
KING COUNTY AERIAL SURVEY (KCAS)
HELD KCAS BEARING ALONG E-W
CENTERLINE OF SEC. 19-24-6.

- LEGEND
- ⊕ SET MONUMENT IN CASE
 - ⊗ MONUMENT (FOUND)
 - ⊙ MONUMENT IN CASE (FOUND)

