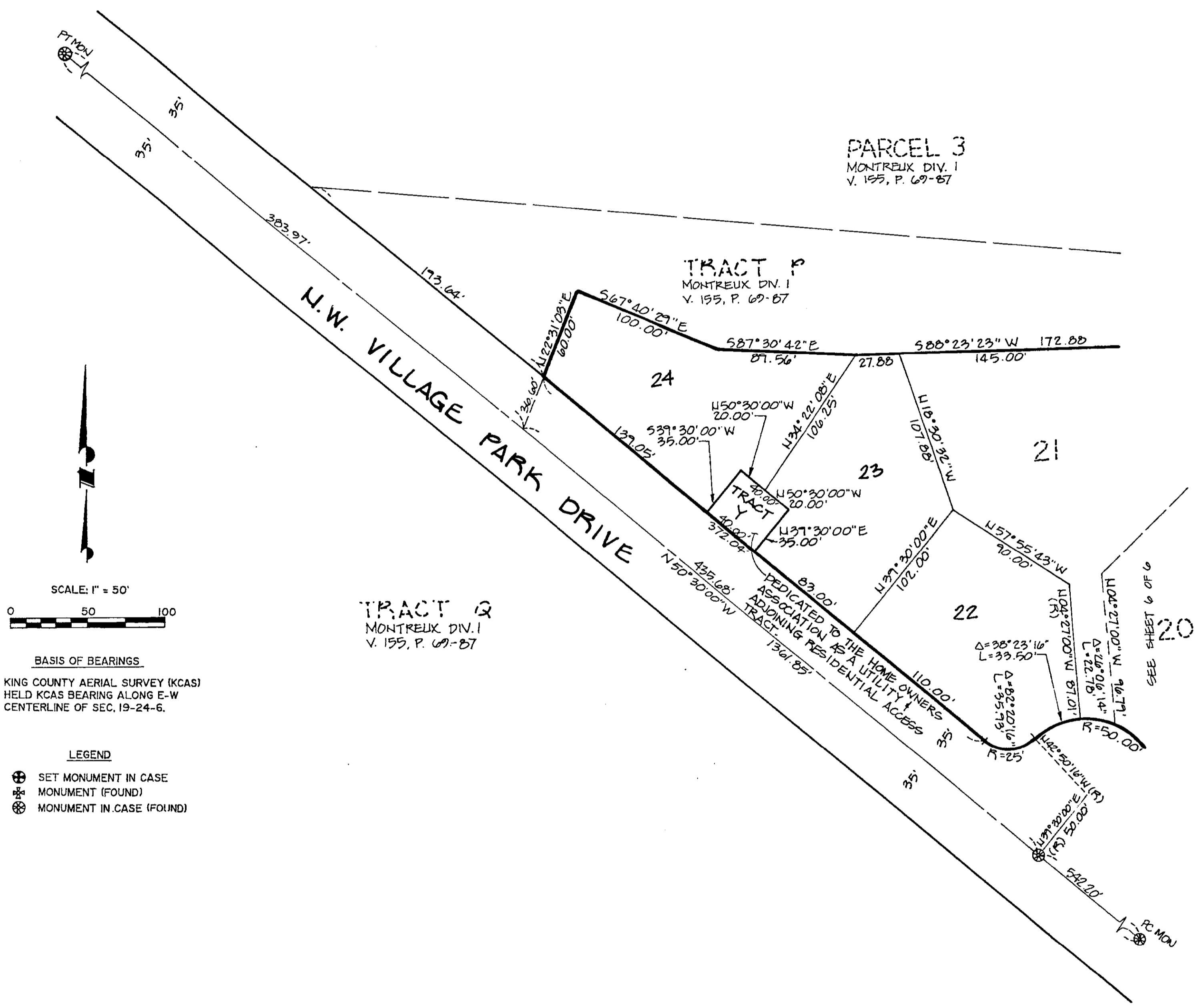


MONTREUX DIVISION THREE

A REPLAT OF PARCELS 2A & 2B, OF MONTREUX DIV. I
 SEC. 19, TWP. 24 N., RGE. 6 E., W.M.
 CITY OF ISSAQUAH, KING COUNTY, WASHINGTON

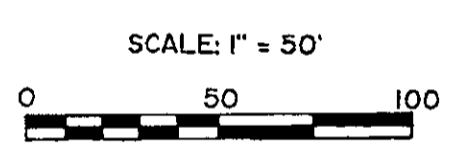


PARCEL 3
 MONTREUX DIV. I
 V. 1955, P. 69-87

TRACT P
 MONTREUX DIV. I
 V. 1955, P. 69-87

TRACT Q
 MONTREUX DIV. I
 V. 1955, P. 69-87

SEE SHEET 6 OF 6



BASIS OF BEARINGS
 KING COUNTY AERIAL SURVEY (KCAS)
 HELD KCAS BEARING ALONG E-W
 CENTERLINE OF SEC. 19-24-6.

- LEGEND**
- ⊕ SET MONUMENT IN CASE
 - ⊗ MONUMENT (FOUND)
 - ⊙ MONUMENT IN CASE (FOUND)

