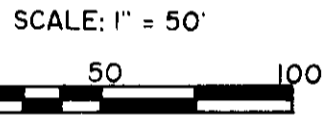
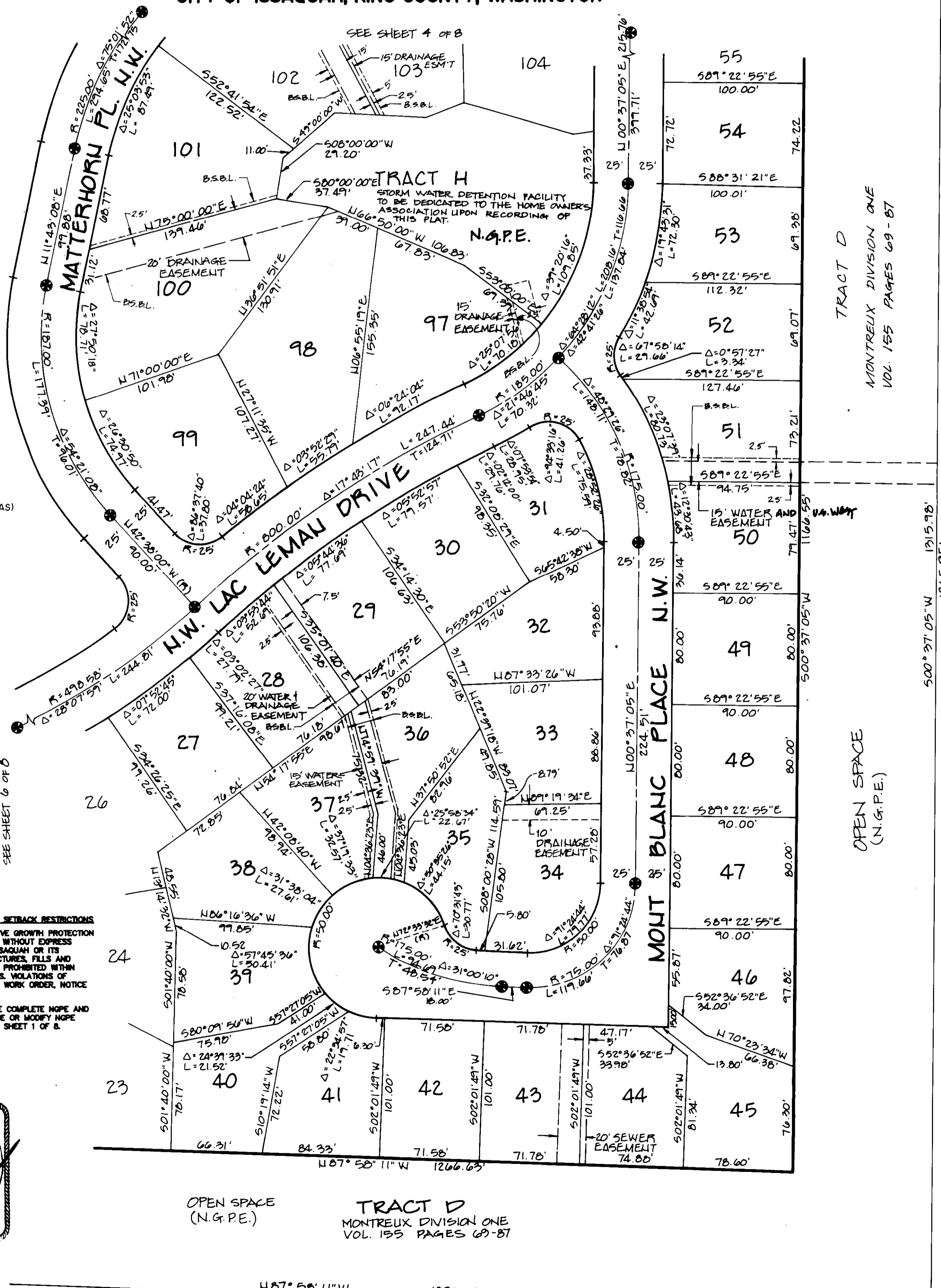


MONTREUX DIVISION TWO

A REPLAT OF PARCEL 1 OF MONTREUX DIV. I
SEC. 19, TWP. 24 N., RGE. 6 E., W.M.
CITY OF ISSAQUAH, KING COUNTY, WASHINGTON



BASIS OF BEARINGS

KING COUNTY AERIAL SURVEY (KCAS)
HELD KCAS BEARING ALONG E-W
CENTERLINE OF SEC. 19-24-6.

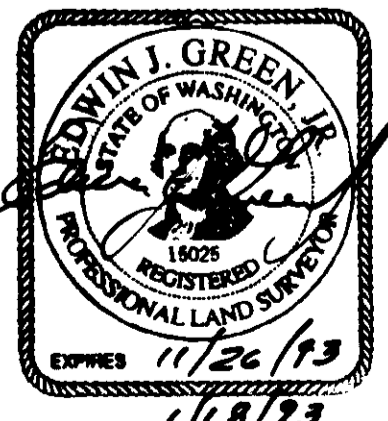
LEGEND

- ⊕ SET MONUMENT IN CASE MONUMENT (FOUND)
- ⊙ MONUMENT IN CASE (FOUND)
- SET PROPERTY CORNER
- PROPERTY CORNER (FOUND)

WARNING!

NATIVE GROWTH PROTECTION AND BUILDING SETBACK RESTRICTIONS
THE NATURAL VEGETATION INSIDE THE NATIVE GROWTH PROTECTION EASEMENT (NGPE) SHALL NOT BE ALTERED WITHOUT EXPRESS WRITTEN PERMISSION FROM THE CITY OF ISSAQUAH OR ITS SUCCESSOR AGENCY. PLACEMENT OF STRUCTURES, FILLS AND OBSTRUCTIONS OF ANY KIND ARE STRICTLY PROHIBITED WITHIN IDENTIFIED BUILDING SETBACK (BSBL) AREAS. VIOLATIONS OF THESE PROVISIONS WILL RESULT IN A STOP WORK ORDER, NOTICE AND ORDER, AND/OR CIVIL PENALTIES.

THIS WARNING IS ONLY A SUMMARY OF THE COMPLETE NGPE AND BSBL TEXT AND DOES NOT REDUCE, CHANGE OR MODIFY NGPE AND/OR BSBL RESTRICTIONS AS FOUND ON SHEET 1 OF 8.



OPEN SPACE
(N.G.P.E.)

TRACT D
MONTREUX DIVISION ONE
VOL. 155 PAGES 69-87

S.E. 60TH ST.

487° 58' 11" W 1391.21'

TRACT D
MONTREUX DIVISION ONE
VOL. 155 PAGES 69-87

OPEN SPACE
(N.G.P.E.)

UNPLATTED