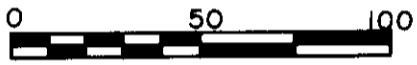


MONTREUX DIVISION TWO

A REPLAT OF PARCEL 1 OF MONTREUX DIV. 1
SEC. 19, TWP. 24 N., RGE. 6 E., W.M.
CITY OF ISSAQUAH, KING COUNTY, WASHINGTON



SCALE: 1" = 50'



BASIS OF BEARINGS

KING COUNTY AERIAL SURVEY (KCAS)
HELD KCAS BEARING ALONG E-W
CENTERLINE OF SEC. 19-24-6.

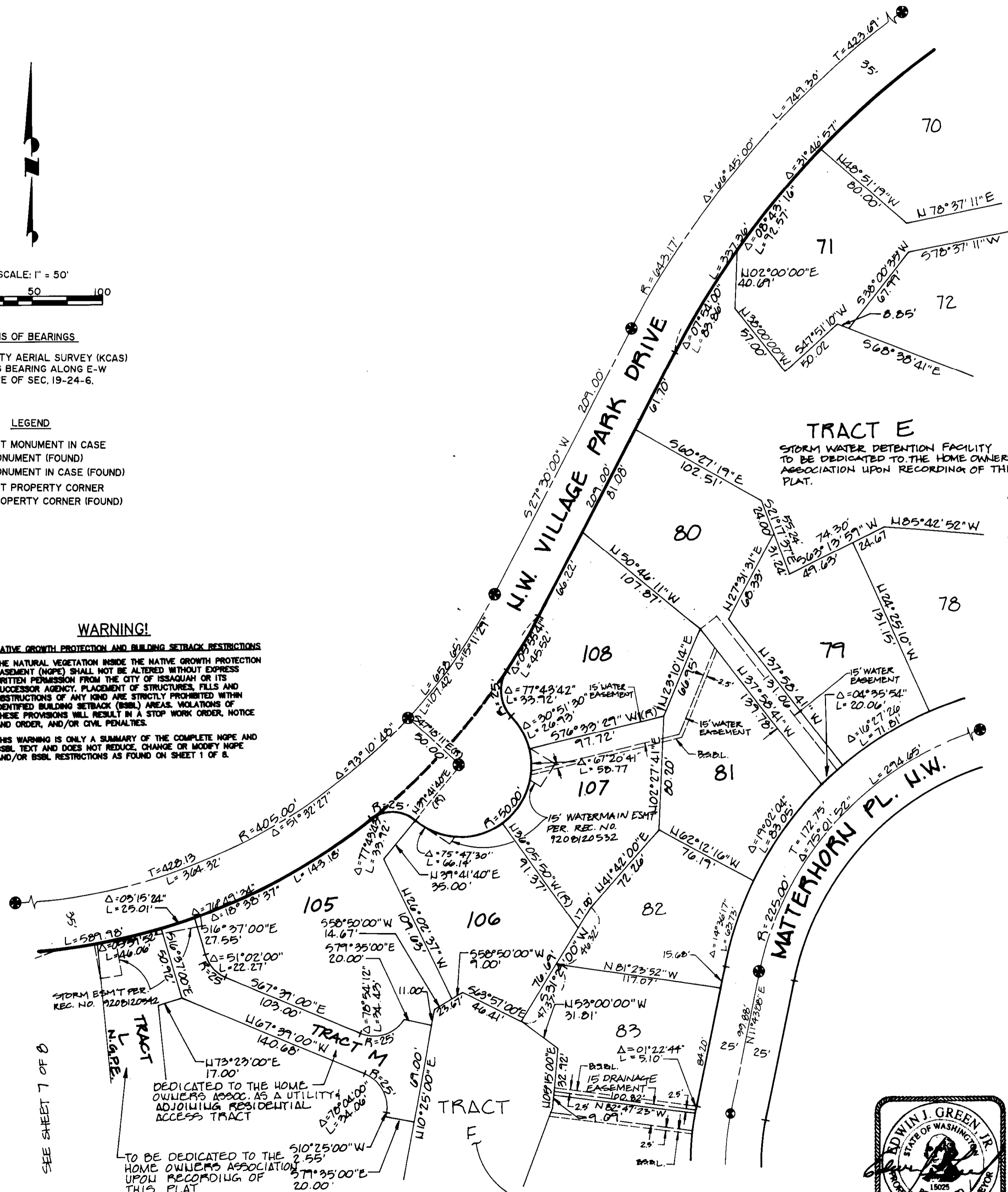
LEGEND

- ⊕ SET MONUMENT IN CASE
- ⊗ MONUMENT (FOUND)
- ⊕⊗ MONUMENT IN CASE (FOUND)
- SET PROPERTY CORNER
- PROPERTY CORNER (FOUND)

WARNING!

NATIVE GROWTH PROTECTION AND BUILDING SETBACK RESTRICTIONS
THE NATURAL VEGETATION INSIDE THE NATIVE GROWTH PROTECTION EASEMENT (NGPE) SHALL NOT BE ALTERED WITHOUT EXPRESS WRITTEN PERMISSION FROM THE CITY OF ISSAQUAH OR ITS SUCCESSOR AGENCY. PLACEMENT OF STRUCTURES, FILLS AND OBSTRUCTIONS OF ANY KIND ARE STRICTLY PROHIBITED WITHIN IDENTIFIED BUILDING SETBACK (BSBL) AREAS. VIOLATIONS OF THESE PROVISIONS WILL RESULT IN A STOP WORK ORDER, NOTICE AND ORDER, AND/OR CIVIL PENALTIES.

THIS WARNING IS ONLY A SUMMARY OF THE COMPLETE NGPE AND BSBL TEXT AND DOES NOT REDUCE, CHANGE OR MODIFY NGPE AND/OR BSBL RESTRICTIONS AS FOUND ON SHEET 1 OF 8.



TRACT E
STORM WATER DETENTION FACILITY
TO BE DEDICATED TO THE HOME OWNER'S
ASSOCIATION UPON RECORDING OF THIS PLAT.

DEDICATED TO THE HOME OWNERS ASSOC. AS A UTILITY ADJOINING RESIDENTIAL ACCESS TRACT
TO BE DEDICATED TO THE HOME OWNERS ASSOCIATION UPON RECORDING OF THIS PLAT

STORM WATER DETENTION FACILITY
TO BE DEDICATED TO THE HOME OWNER'S
ASSOCIATION UPON RECORDING OF THIS PLAT.
N.G.P.E.



SEE SHEET 7 OF 8

SEE SHEET 6 OF 8

SEE SHEET 4 OF 8