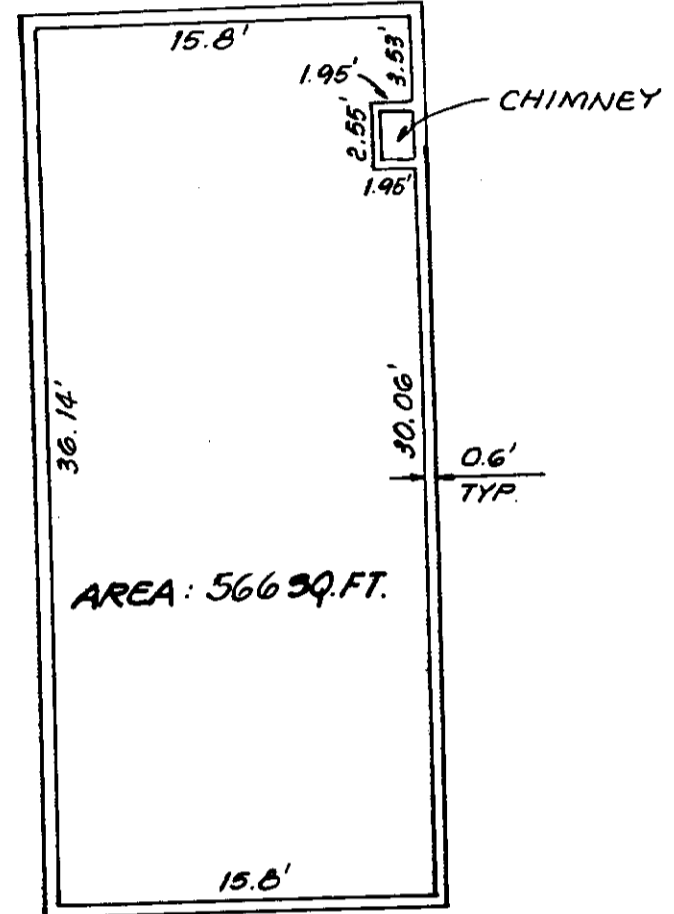
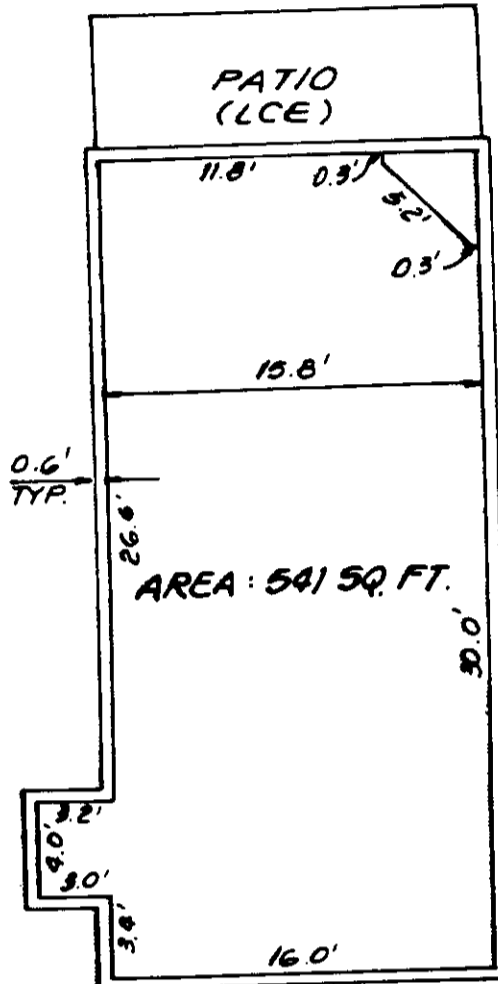
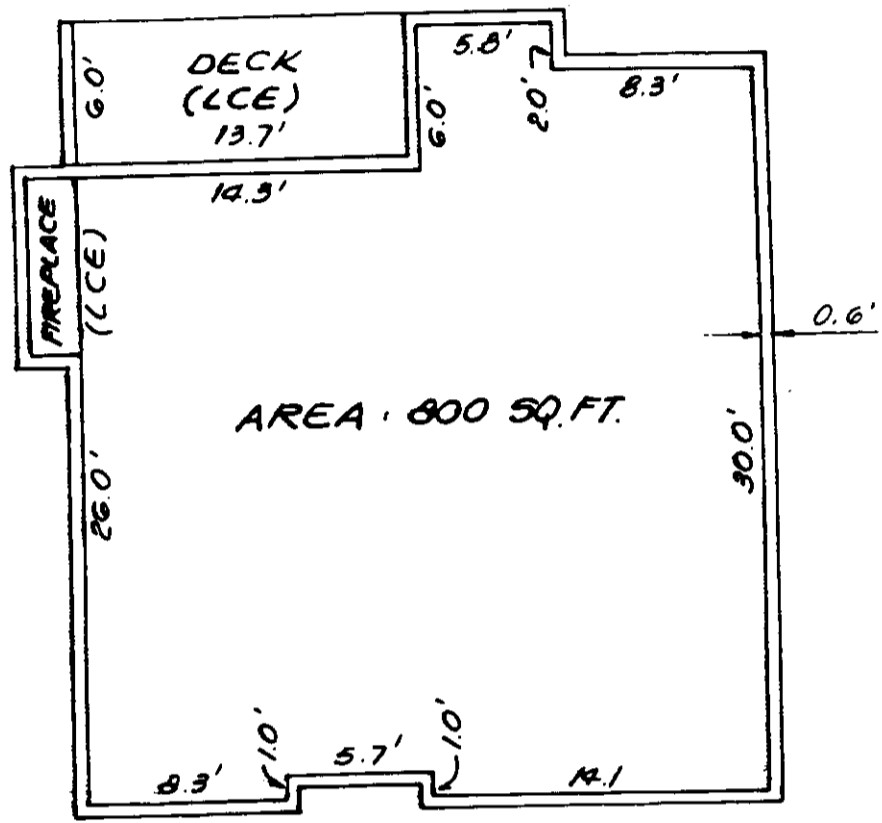


AMENDMENT No. I PHASE I NEWPORT SPRINGS

A CONDOMINIUM

SECTION 28, TOWNSHIP 24 NORTH, RANGE 6 EAST, W. M.
KING COUNTY WASHINGTON



LOWER FLOOR

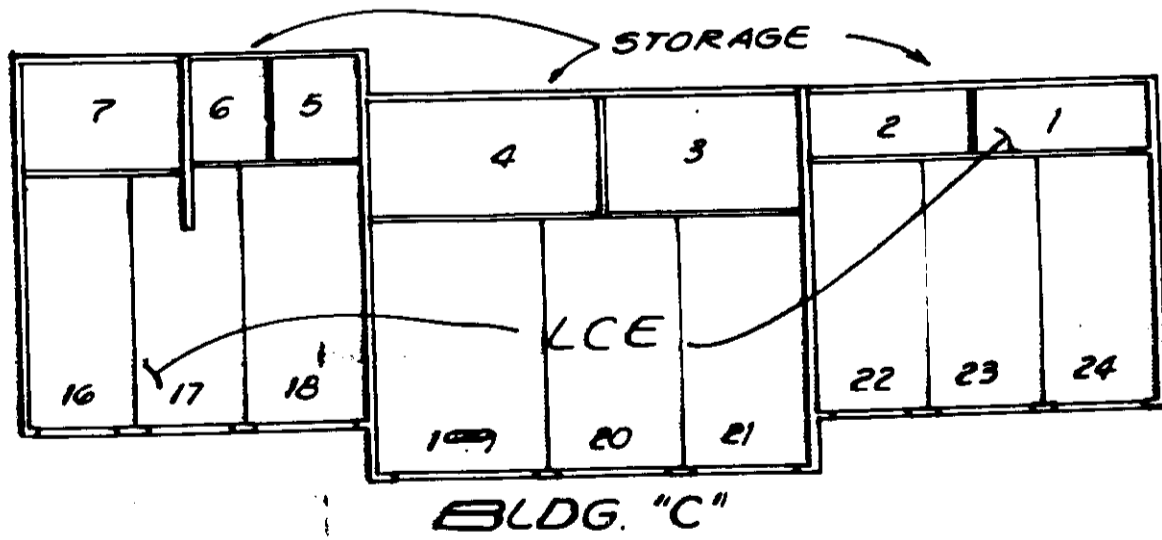
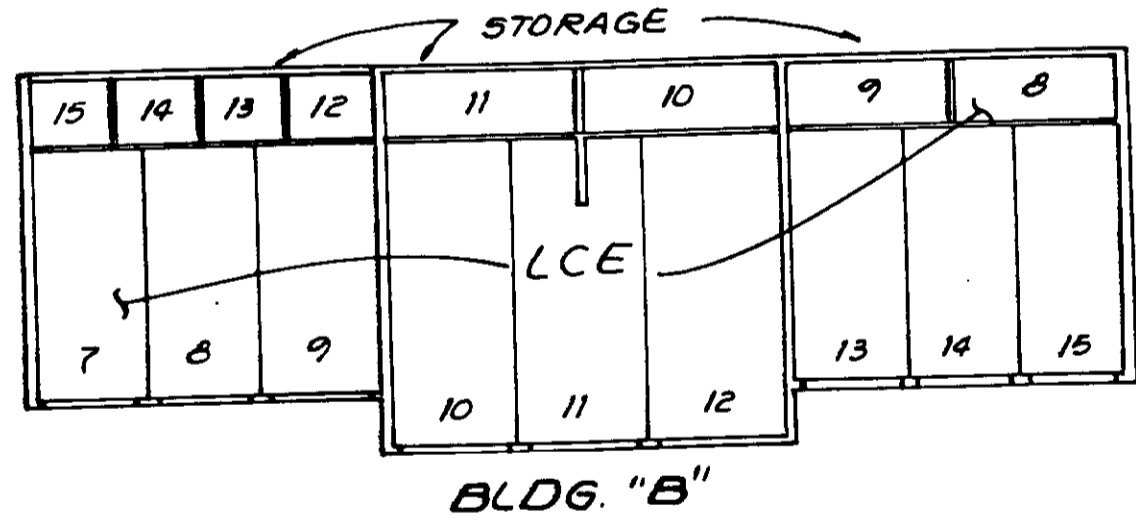
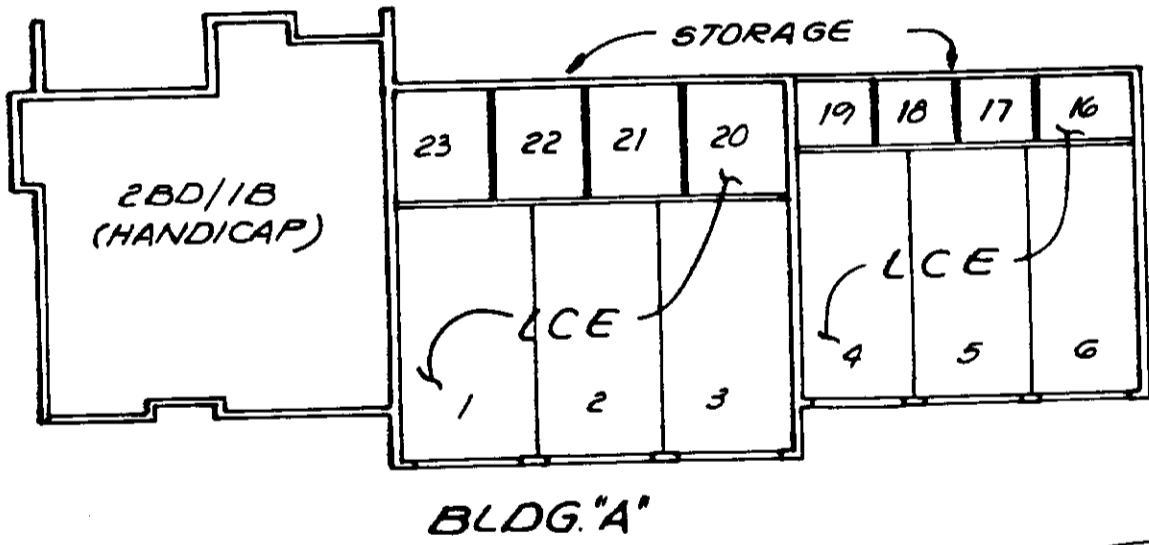
UPPER FLOOR

TYPICAL UNIT

2 BEDROOM, 2 BATH
2 BEDROOM, 1 BATH - HANDICAP
SCALE: 1/8" = 1'-0"

TYPICAL TWO STORY TOWNHOUSE

2 BEDROOM, 2 1/2 BATH
SCALE: 1/8" = 1'-0"



FIRST FLOOR PLAN - GARAGE & STORAGE

SCALE: 1/16" = 1'-0"

BLDG.	UNIT TYPE	UNIT #	FLOOR ELEV.	CEILING ELEV.	UNIT TYPE	UNIT #	FLOOR ELEV.	CEILING ELEV.	UNIT TYPE	UNIT #	FLOOR ELEV.	CEILING ELEV.	
A	2BD/1B (H)	A-1	85.12	94.02	2BD/2B	A-2	94.92	102.92			103.82	111.82/109.67	
					TOWNHOUSE	A-3	94.92	102.92			103.82	111.82/109.67	
					TOWNHOUSE	A-4	94.92	102.92					
					2BD/2B(R)	A-5	94.92	102.92	2BD/2B	A-6	103.82	111.82	
B	2BD/2B(R)				2BD/2B	B-1	96.94	104.94	2BD/2B	B-5	105.90	113.90	
					TOWNHOUSE	B-2	96.94	104.94			105.90	113.90/111.75	
					TOWNHOUSE	B-3	96.94	104.94			105.90	113.90/111.75	
					2BD/2B(R)	B-4	96.94	104.94	2BD/2B	B-6	105.90	113.90	
C	2BD/2B(R)				2BD/2B	C-1	97.01	105.01	2BD/2B	C-5	105.96	113.96	
					TOWNHOUSE	C-2	97.01	105.01			105.96	113.96/111.81	
					TOWNHOUSE	C-3	97.01	105.01			105.96	113.96/111.81	
					2BD/2B(R)	C-4	97.01	105.01					