

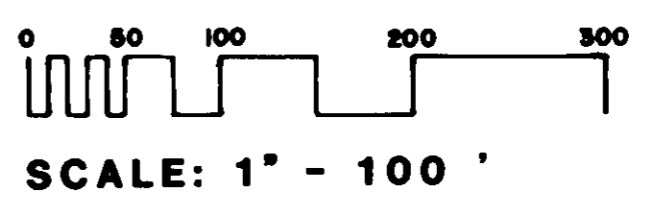
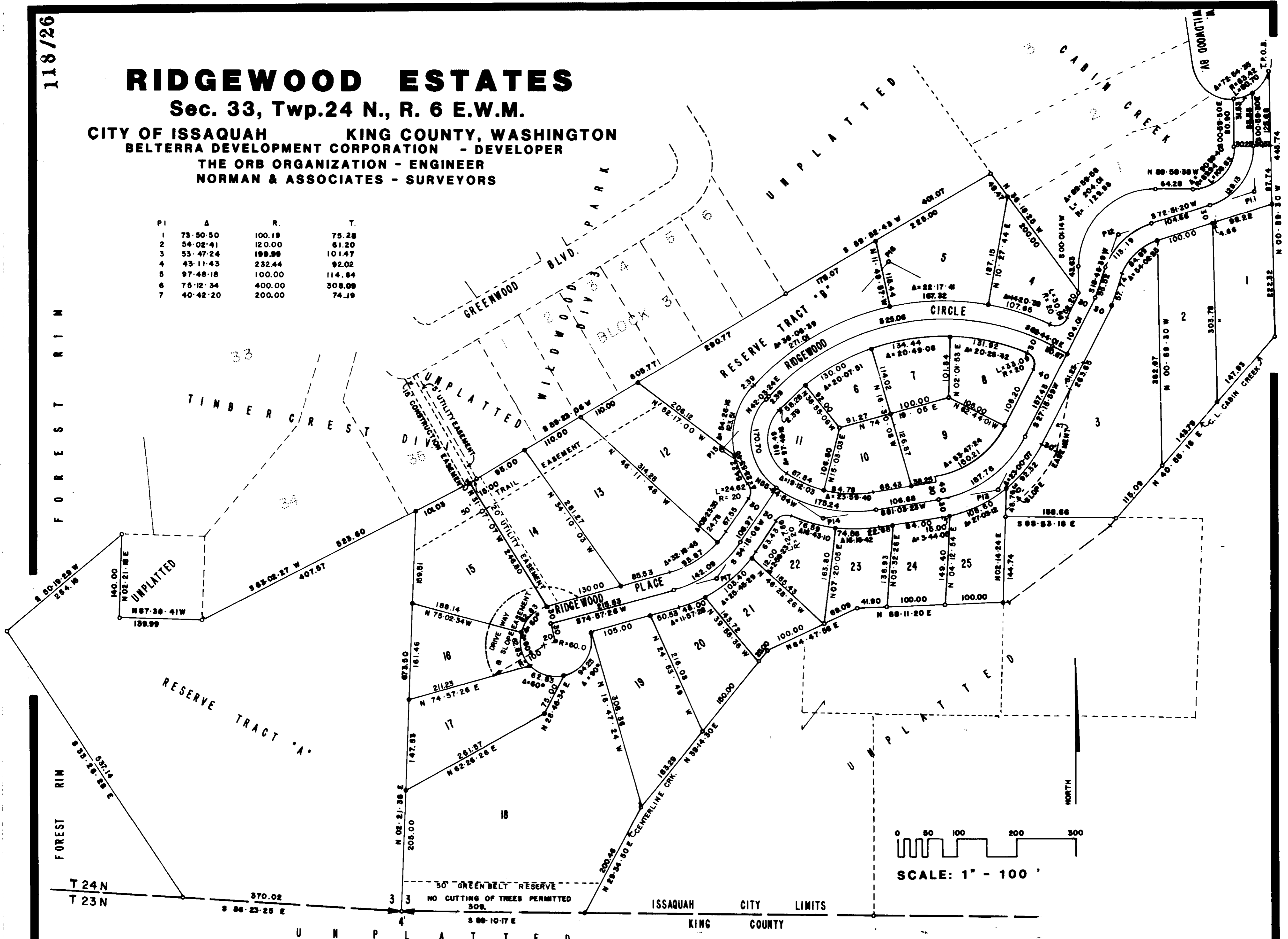
118/26

# RIDGEWOOD ESTATES

Sec. 33, Twp.24 N., R. 6 E.W.M.

CITY OF ISSAQUAH KING COUNTY, WASHINGTON  
 BELTERRA DEVELOPMENT CORPORATION - DEVELOPER  
 THE ORB ORGANIZATION - ENGINEER  
 NORMAN & ASSOCIATES - SURVEYORS

PI	A	R.	T.
1	73-50-50	100.19	75.28
2	54-02-41	120.00	61.20
3	53-47-24	199.99	101.47
4	43-11-43	232.44	92.02
5	97-48-18	100.00	114.64
6	75-12-34	400.00	308.09
7	40-42-20	200.00	74.19



ISSAQUAH CITY LIMITS  
 KING COUNTY