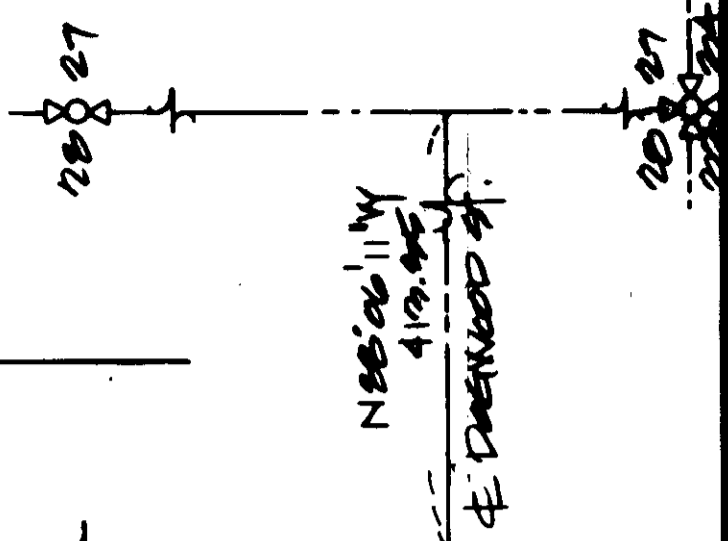
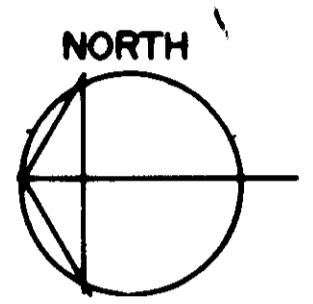


RIPARIAN APARTMENTS
A PLANNED UNIT DEVELOPMENT
IN SECTION 28, T. 24 N., R. 6 E., W.M.
ISSAQUAH, KING COUNTY, WASHINGTON

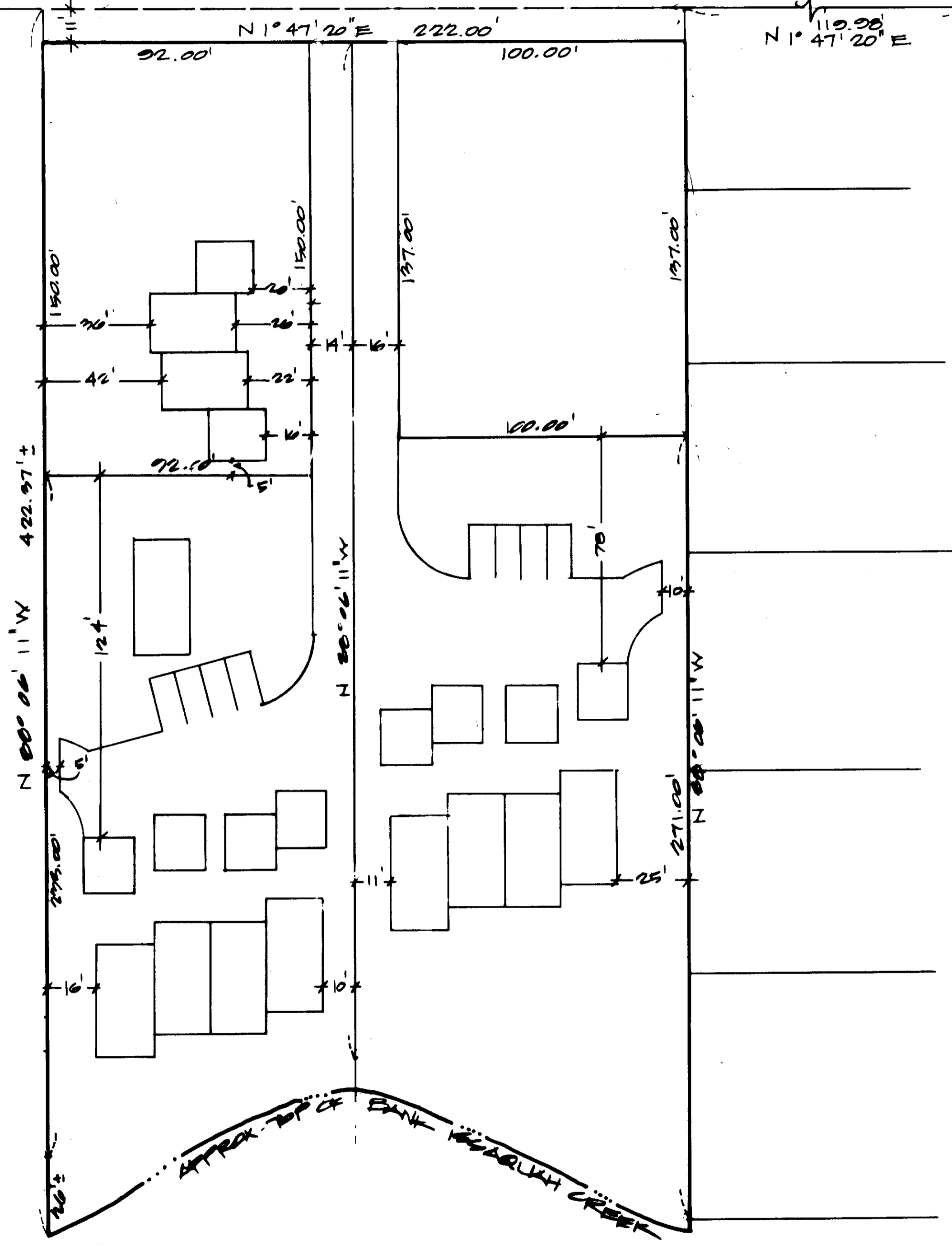
5 100



1 ST AVENUE NW



SCALE: 1" = 30'



APPROX. TOP OF BANK ISSAQUAH CREEK