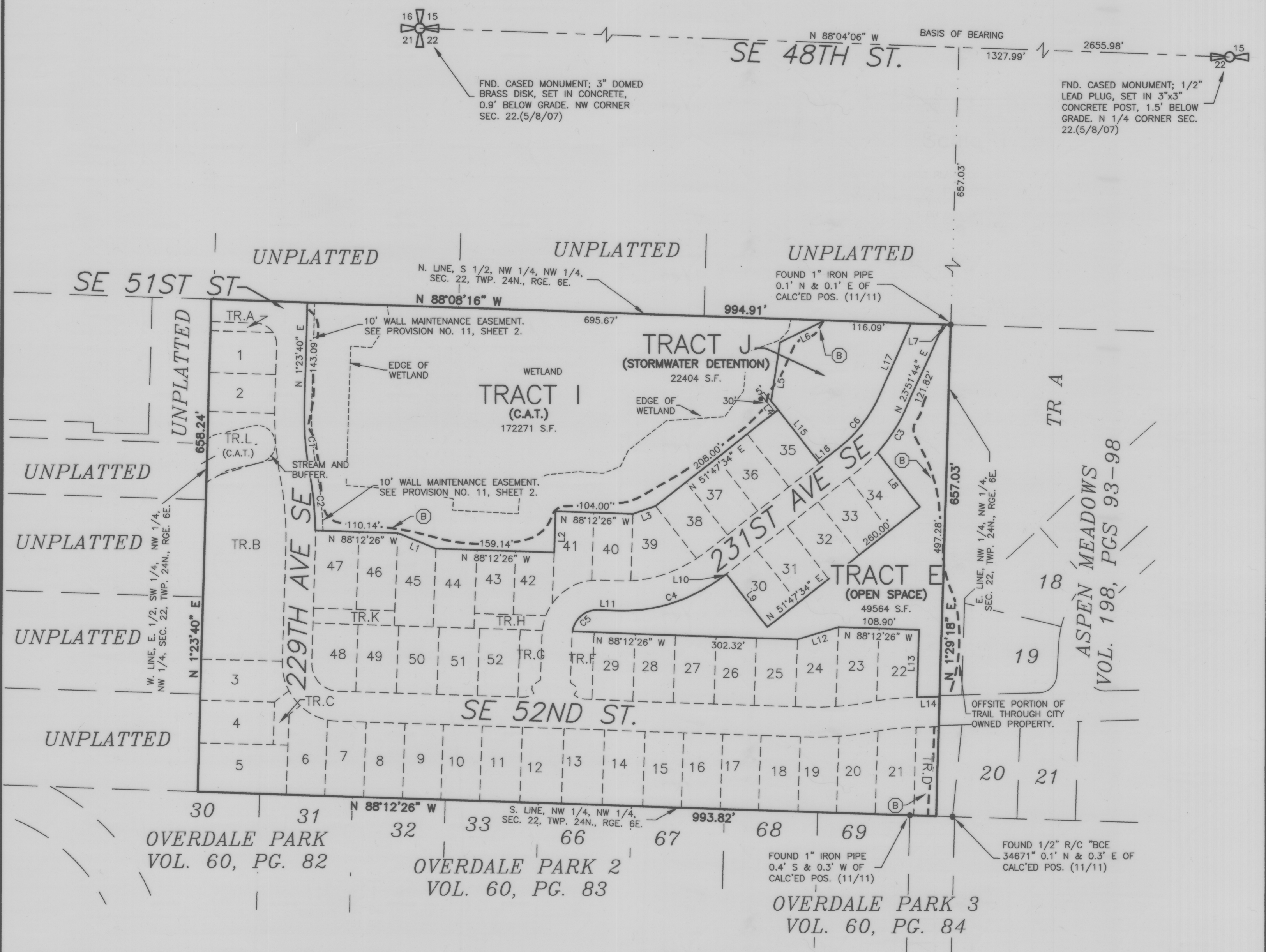


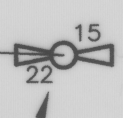
RIVENWOOD

(A.K.A. ISSAQUAH 22)

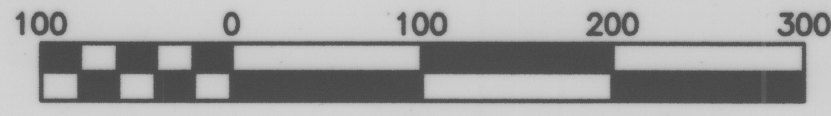
NW 1/4, NW 1/4, SEC. 22, TWP. 24N., RGE. 6E., W.M.
CITY OF ISSAQUAH, KING COUNTY, WASHINGTON



FND. CASED MONUMENT; 3" DOMED BRASS DISK, SET IN CONCRETE, 0.9' BELOW GRADE. NW CORNER SEC. 22.(5/8/07)



FND. CASED MONUMENT; 1/2" LEAD PLUG, SET IN 3"x3" CONCRETE POST, 1.5' BELOW GRADE. N 1/4 CORNER SEC. 22.(5/8/07)



Scale 1" = 100'

MERIDIAN
WASHINGTON STATE PLANE COORDINATE SYSTEM - NORTH ZONE (NAD 83/91)

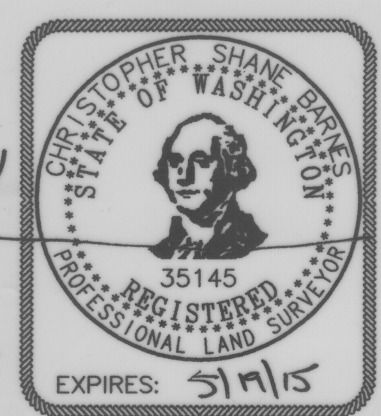
EQUIPMENT & PROCEDURES
A 5" ELECTRONIC TOTAL STATION WAS USED FOR THIS FIELD TRAVERSE SURVEY. ACCURACY MEETS OR EXCEEDS W.A.C. 332-130-090.

- LEGEND**
- FOUND REBAR AS NOTED IN CONTROL LEGEND.
 - ⊕ FOUND MONUMENT AS NOTED IN CONTROL LEGEND.
 - R1 DENOTES REFERENCE CALL.
 - (B) CONCEPTUAL CENTERLINE OF PUBLIC TRAIL ACCESS EASEMENT SEE EASEMENT PROVISION 8, SHEET 2.
 - LOTS 35-41 BENEFITTED BY PRIVATE DRAINAGE EASEMENTS OVER TRACT I. SEE PROVISIONS SHEET 2, AND SHEET 6 FOR LOT 36-41 EASEMENT DETAIL.

- REFERENCES**
1. PLAT OF ASPEN MEADOWS AS RECORDED IN VOLUME 198 OF PLATS, AT PAGES 93 THROUGH 98, UNDER RECORDING NUMBER 20010322001027.
 2. PLAT OF HIGHLAND TERRACES AS RECORDED IN VOLUME 232 OF PLATS, AT PAGES 69 THROUGH 72, UNDER RECORDING NUMBER 20060112003426.
 3. PLAT OF OVERDALE PARK AS RECORDED IN VOLUME 60 OF PLATS, AT PAGE 82, UNDER RECORDING NUMBER 4934223.
 4. PLAT OF OVERDALE PARK NO. 2 AS RECORDED IN VOLUME 60 OF PLATS, AT PAGE 83, UNDER RECORDING NUMBER 4934224.
 5. PLAT OF OVERDALE PARK NO. 3 AS RECORDED IN VOLUME 60 OF PLATS AT PAGES 84 THROUGH 86, UNDER RECORDING NUMBER 4934225.

TAG TABLE			
TAG #	LENGTH	DIRECTION/DELTA	RADIUS
C1	86.64	12°40'49"	391.50
C2	75.95	10°09'21"	428.50
C3	71.43	18°28'34"	221.50
C4	154.64	40°00'00"	221.50
C5	49.12	84°00'11"	33.50
C6	88.48	27°55'50"	181.50
L1	55.36	N 68°08'08" W	
L2	123.55	N 01°47'34" E	
L3	32.46	N 70°41'24" E	
L4	14.85	N 38°12'26" W	
L5	79.30	N 08°09'18" E	
L6	67.69	N 63°54'54" E	
L7	10.00	N 88°08'16" W	
L8	93.01	N 38°12'26" W	
L9	90.00	N 38°12'26" W	
L10	226.92	N 51°47'34" E	
L11	25.36	N 88°12'26" W	
L12	57.39	N 73°32'03" E	
L13	90.00	N 01°29'18" E	
L14	31.03	N 88°26'10" E	

TAG TABLE			
TAG #	LENGTH	DIRECTION/DELTA	RADIUS
L15	90.00	S 38°12'26" E	
L16	34.04	N 51°47'34" E	
L17	105.66	N 23°51'44" E	



5/12/15

MG & A
Mead Gilman & Assoc.
Professional Land Surveyors
P.O. BOX 289, WOODINVILLE, WA 98072
PHONE: (425) 486-1252 FAX: (425) 486-6108