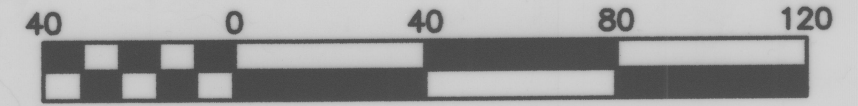


RIVENWOOD

(A.K.A. ISSAQUAH 22)

NW 1/4, NW 1/4, SEC. 22, TWP. 24N., RGE. 6E., W.M.
CITY OF ISSAQUAH, KING COUNTY, WASHINGTON



Scale 1" = 40'

MERIDIAN

WASHINGTON STATE PLANE COORDINATE SYSTEM - NORTH ZONE (NAD 83/91)

EQUIPMENT & PROCEDURES

A 5" ELECTRONIC TOTAL STATION WAS USED FOR THIS FIELD TRAVERSE SURVEY. ACCURACY MEETS OR EXCEEDS W.A.C. 332-130-090.

LEGEND

- SET 1/2" X 24" REBAR WITH 1-3/4" PLASTIC CAP STAMPED "MEAD GILMAN & ASSOCIATES 32434/35145" (EXCEPT AS OTHERWISE NOTED).
- ⊙ SET 4" X 4" CONCRETE MONUMENT WITH 1-1/2" DIAMETER BRASS DISC STAMPED "35145" WITH "X" IN A CASE.
- SPWSD SAMMAMISH PLATEAU WATER AND SEWER DISTRICT
- P.D.E. PRIVATE DRAINAGE EASEMENT
- C.A.T. CRITICAL AREA TRACT

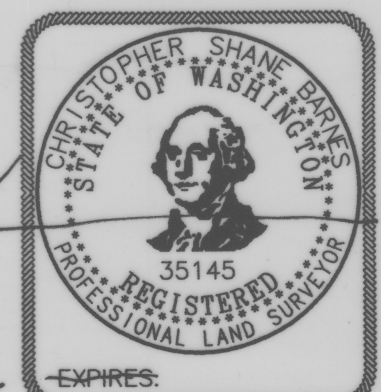
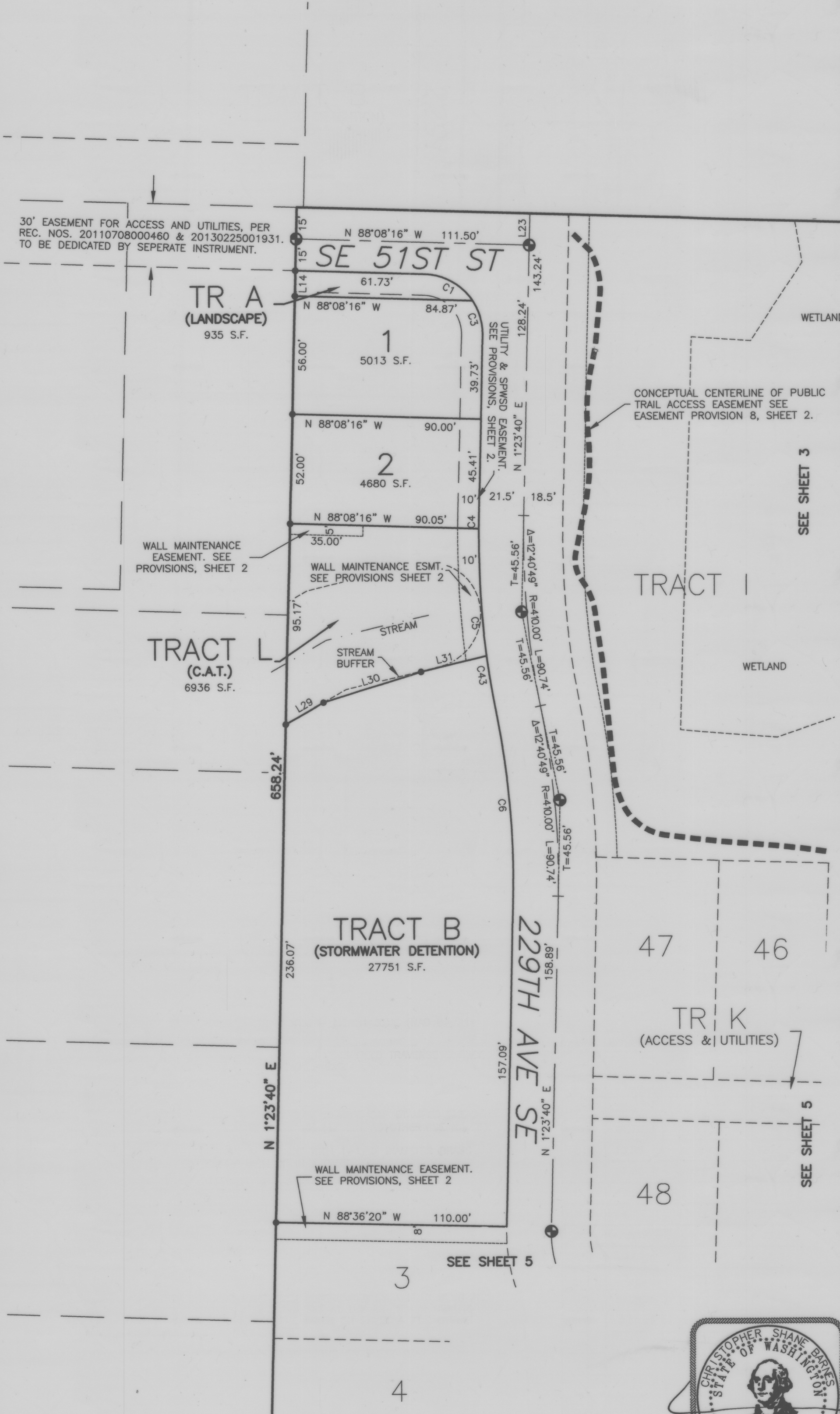
NOTES

ALL FRONT PROPERTY CORNERS HAVE BEEN REFERENCED BY A LEAD PLUG AND TACK, WITH AN LS WASHER STAMPED 35145 SET AT THE EXTENSION OF THE PROPERTY LINE TO THE TOP OF CURB. SEE TABLE BELOW FOR OFFSET DISTANCES FROM PLUG TO FRONT CORNER.

TAG TABLE			
TAG #	LENGTH	DIRECTION/Delta	RADIUS
C1	27.17	54°37'24"	28.50
C3	17.36	34°54'32"	28.50
C4	6.59	0°52'31"	431.50
C5	60.39	8°01'09"	431.50
C6	85.98	12°40'49"	388.50
C43	28.51	3°47'09"	431.50
L14	12.00	N 01°23'40" E	
L23	15.00	N 01°23'40" E	
L29	20.81	N 60°31'04" E	
L30	48.60	N 72°50'01" E	
L31	32.30	N 76°45'43" E	

CURB PLUG TABLES

LOT LINE	OFFSET	LOT LINE	OFFSET
TR. A/1	3.81	30/31	1.17'
1/2	1.12	31/32	1.25'
2/TR L	1.45	32/33	1.21'
TR L/TR B	9.17	33/34	1.21'
TR B/3	9.14	34/TR E	1.61
3/TR C	1.12	TR J/35	6.43'
TR C/6	1.22	35/36	6.31'
6/7	1.22	36/37	6.17'
7/8	1.48	37/38	6.19'
8/9	1.19	38/39	6.12'
9/10	1.34'	39/40	6.27'
10/11	1.16'	40/41	6.16'
11/12	5.95	41/42	12.58
12/13	1.17'	42/TR H	6.29
13/14	1.18'	TR I/47	6.23
14/15	1.13'	47/TR K	6.21
15/16	1.34	TR K/48	6.23
16/17	1.15	48/49	6.11
17/18	1.14	49/50	6.15
18/19	1.10	50/51	6.22'
19/20	1.53	51/52	6.25'
20/21	1.16	52/TR G	6.26'
21/TR D	12.94		
TR D/BNDRY	9.24		
BNDRY/TR E	5.44		
TR E/22	6.19		
22/23	6.45'		
23/24	6.17'		
24/25	6.25'		
25/26	6.10'		
26/27	6.11'		
27/28	6.18'		
28/29	6.20'		
29/TR F	6.20'		
TR F/TR E	1.26		
TR E/30	1.16'		



9/17/15
JOB NO. 13057
SHEET 4 OF 6

MG & A
Mead Gilman & Assoc.
Professional Land Surveyors
P.O. BOX 289, WOODINVILLE, WA 98072
PHONE: (425) 486-1252 FAX: (425) 486-6108