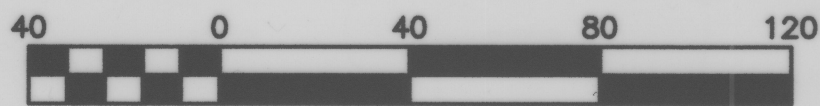
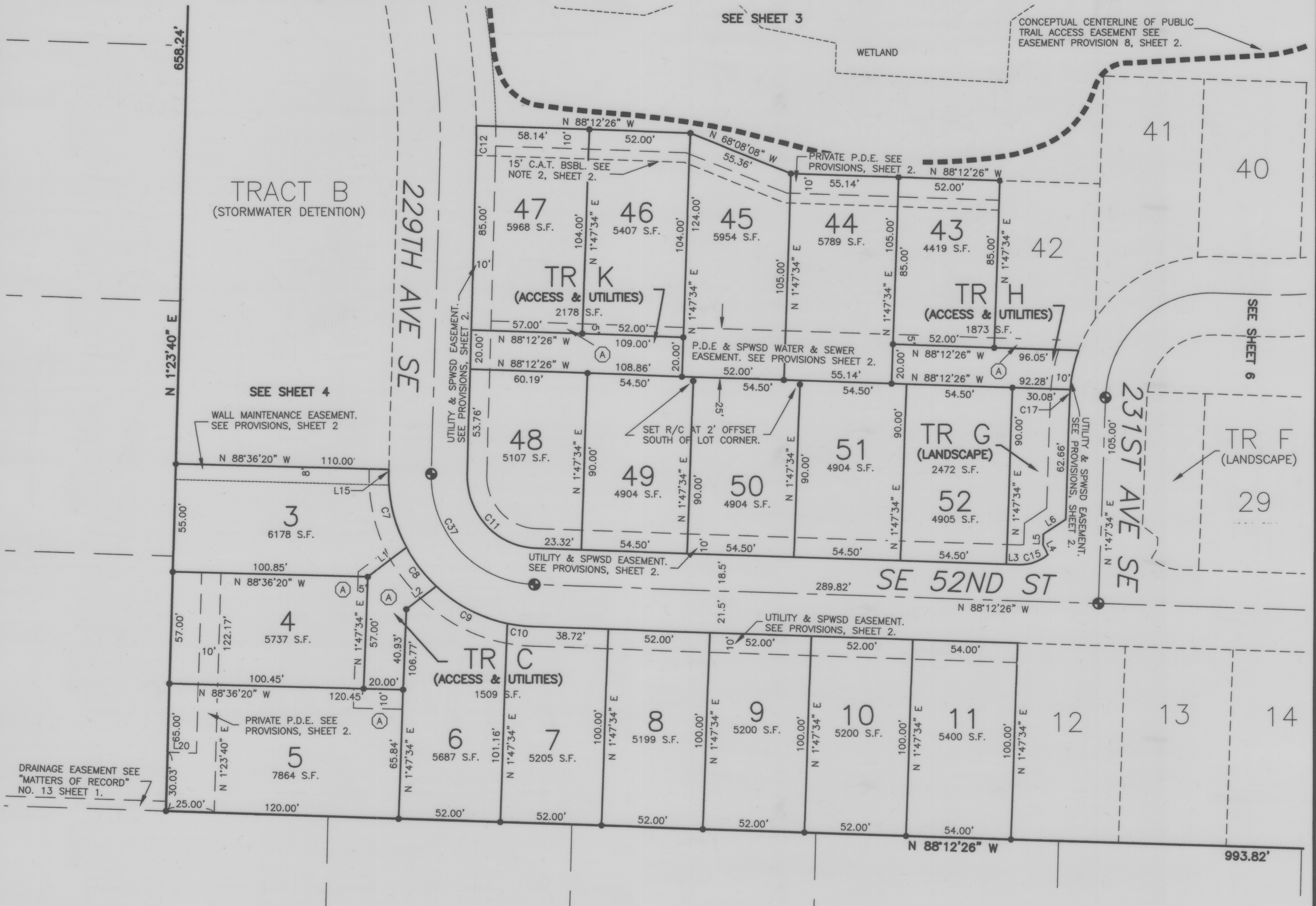


RIVENWOOD

(A.K.A. ISSAQUAH 22)

NW 1/4, NW 1/4, SEC. 22, TWP. 24N., RGE. 6E., W.M.
CITY OF ISSAQUAH, KING COUNTY, WASHINGTON



Scale 1" = 40'

MERIDIAN

WASHINGTON STATE PLANE COORDINATE SYSTEM - NORTH ZONE (NAD 83/91)

EQUIPMENT & PROCEDURES

A 5" ELECTRONIC TOTAL STATION WAS USED FOR THIS FIELD TRAVERSE SURVEY. ACCURACY MEETS OR EXCEEDS W.A.C. 332-130-090.

LEGEND

- SET 1/2" X 24" REBAR WITH 1-3/4" PLASTIC CAP STAMPED "MEAD GILMAN & ASSOCIATES 32434/35145" (EXCEPT AS OTHERWISE NOTED).
- ⊙ SET 4" X 4" CONCRETE MONUMENT WITH 1-1/2" DIAMETER BRASS DISC STAMPED "35145" WITH 'X' IN A CASE.
- SPWSD SAMMAMISH PLATEAU WATER AND SEWER DISTRICT
- P.D.E. PRIVATE DRAINAGE EASEMENT
- C.A.T. CRITICAL AREA TRACT
- BSBL BUILDING SETBACK LINE

NOTES

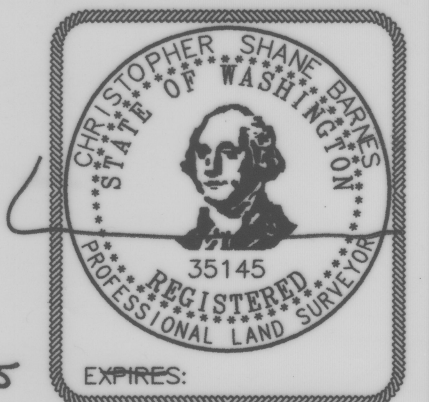
ALL FRONT PROPERTY CORNERS HAVE BEEN REFERENCED BY A LEAD PLUG AND TACK, WITH AN LS WASHER STAMPED 35145 SET AT THE EXTENSION OF THE PROPERTY LINE TO THE TOP OF CURB. SEE TABLE ON SHEET 4 FOR OFFSET DISTANCES FROM PLUG TO FRONT CORNER.

(A) UTILITY AND SPWSD EASEMENT, SEE PROVISIONS ON SHEET 2.

SHEET 5

TAG TABLE

TAG #	LENGTH	DIRECTION/Delta	RADIUS
C7	39.48	29°34'00"	76.50
C8	25.11	18°48'30"	76.50
C9	41.70	31°13'53"	76.50
C10	13.35	9°59'42"	76.50
C11	57.08	89°36'06"	36.50
C12	19.01	2°32'30"	428.50
C15	16.43	40°03'20"	23.50
C17	3.50	2°43'46"	73.50
C37	86.01	89°36'06"	55.00
L1	24.58	N 52°25'25" E	
L2	19.22	N 52°25'25" E	
L3	6.50	N 88°12'26" W	
L4	5.64	N 28°46'33" W	
L5	5.57	N 01°47'34" E	
L6	13.74	N 56°43'45" E	
L15	1.79	N 01°23'40" E	
L20	15.00	N 88°12'26" W	



4/17/15

EXPIRES:



Mead Gilman & Assoc.

Professional Land Surveyors

P.O. BOX 289, WOODINVILLE, WA 98072
PHONE: (425) 486-1252 FAX: (425) 486-6108

JOB NO. 13057
SHEET 5 OF 6